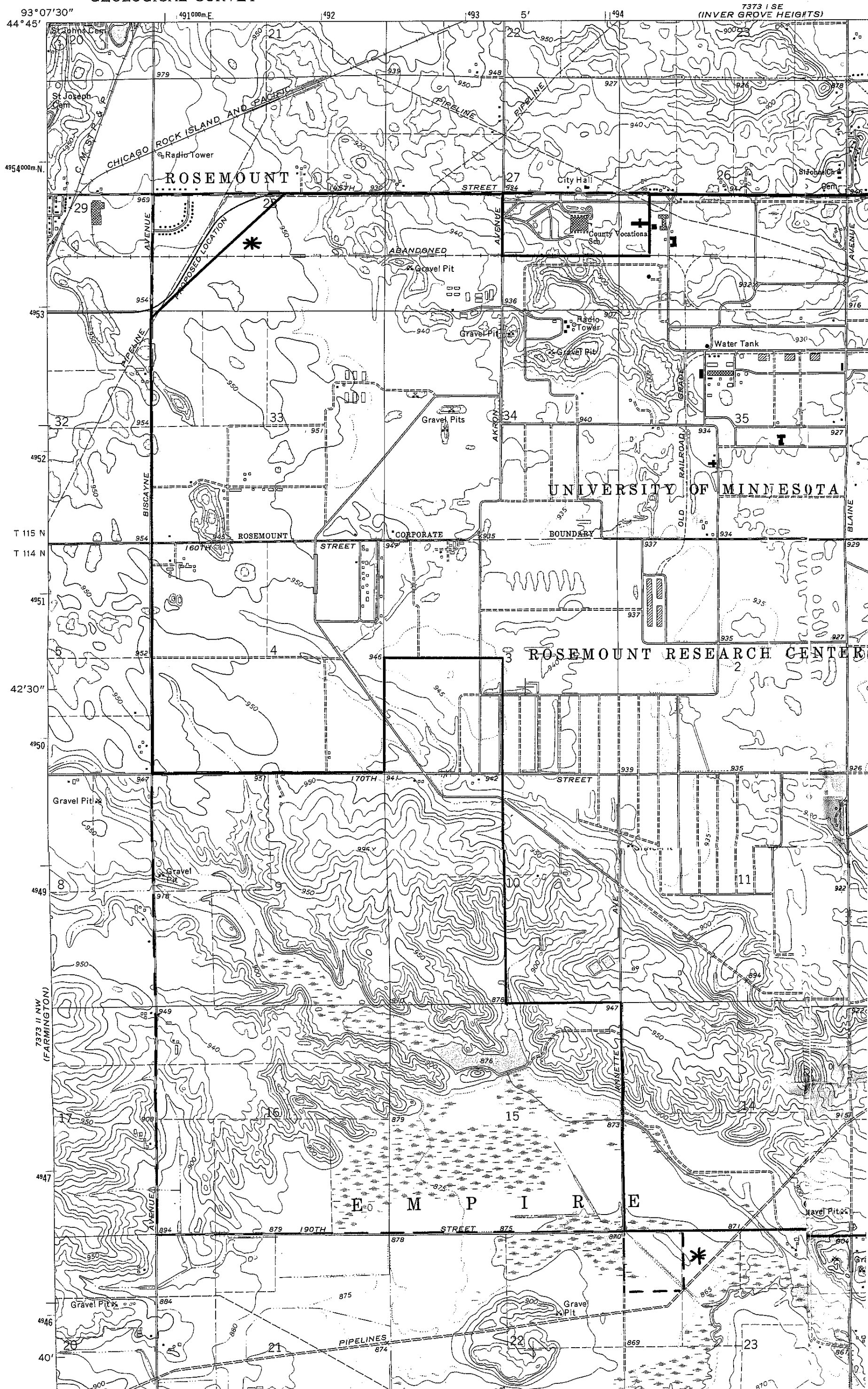


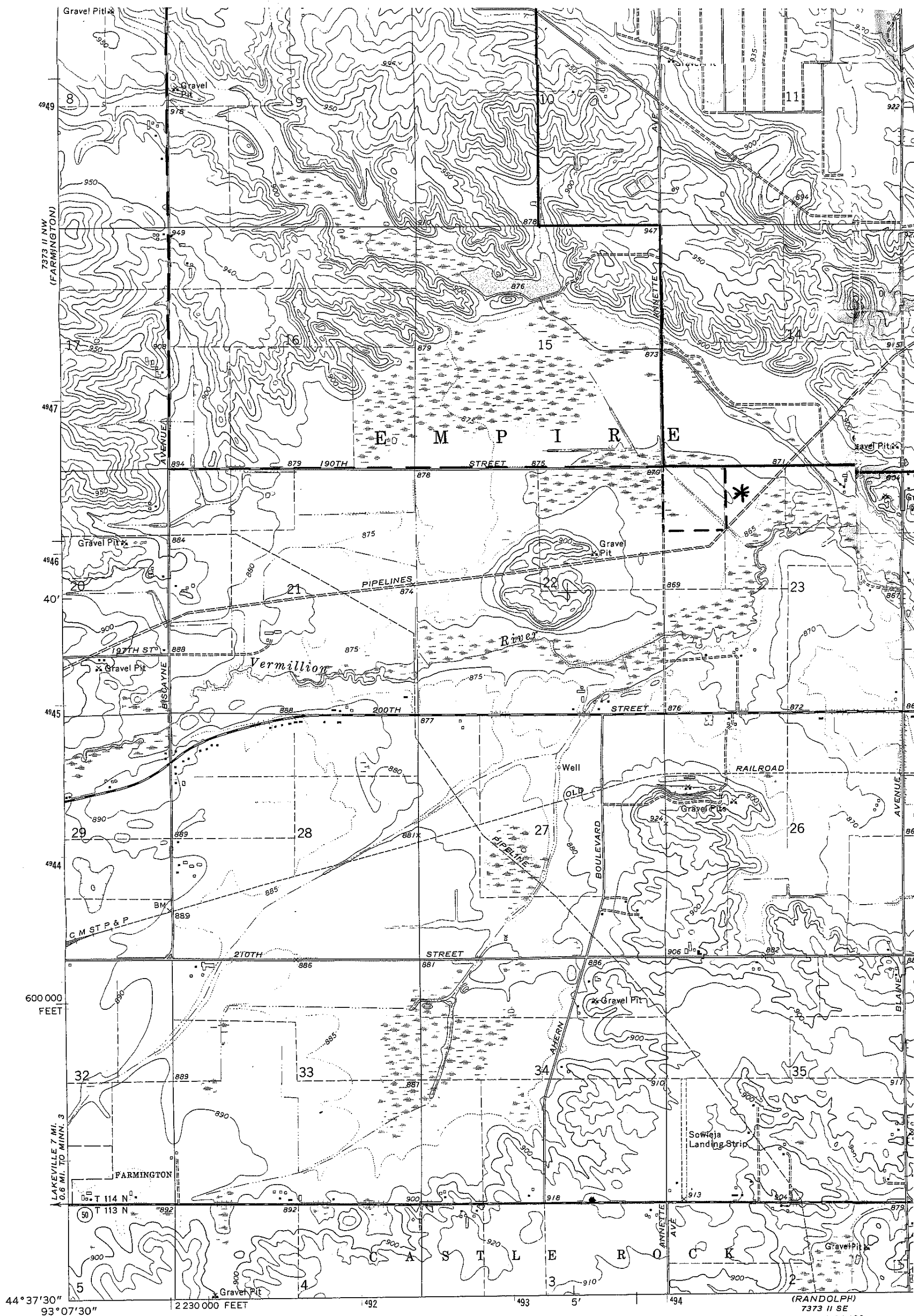
**Attach. 1**

73731 SW  
(ST. PAUL SW)

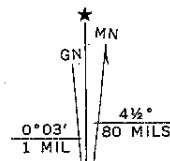
7373 1 SE  
(INVER GROVE HEIGHTS)



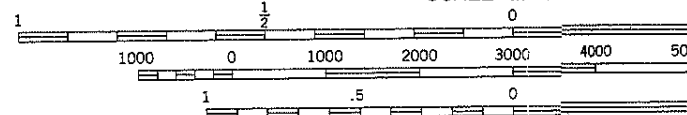
UMP000019



Mapped, edited, and published by the Geological Survey  
 Control by USGS, NOS/NOAA, and Minnesota Highway Department  
 Topography by photogrammetric methods from aerial  
 photographs taken 1973-74. Field checked 1974  
 Projection and 10,000-foot grid ticks: Minnesota coordinate  
 system, south zone (Lambert conformal conic)  
 1000-metre Universal Transverse Mercator grid ticks,  
 zone 15, shown in blue. 1927 North American datum  
 Fine red dashed lines indicate selected fence and field lines  
 where generally visible on aerial photographs  
 This information is unchecked



UTM GRID AND 1974 MAGNETIC NORTH  
 DECLINATION AT CENTER OF SHEET



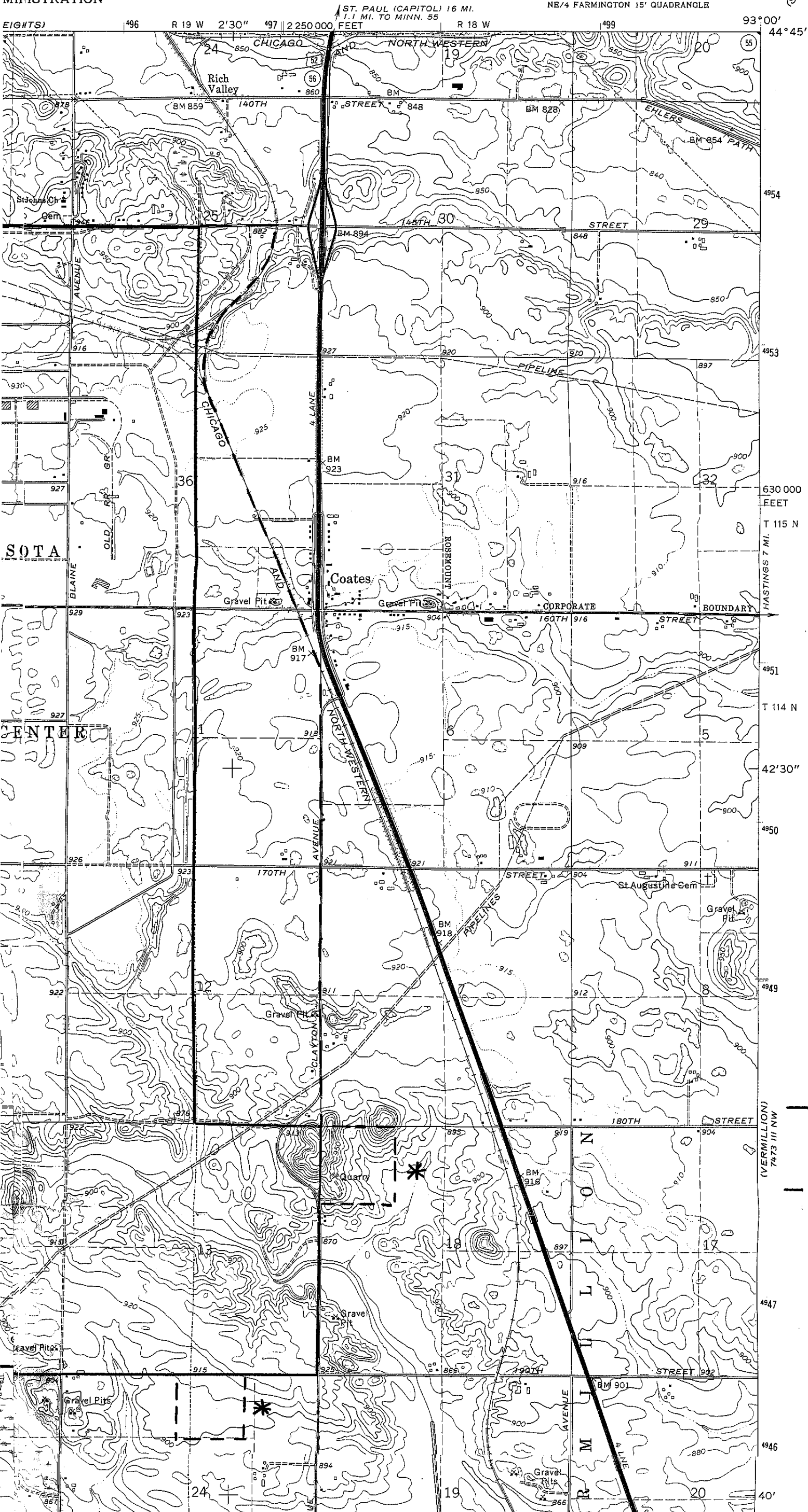
CONTOUR INTERVAL: 10 FEET  
 DOTTED LINES REPRESENT 1-FOOT CONTOUR  
 NATIONAL GEODETTIC VERTICAL DATUM OF

THIS MAP COMPLIES WITH NATIONAL MAP ACCURACY  
 FOR SALE BY U. S. GEOLOGICAL SURVEY, RESTON, VA  
 A FOLDER DESCRIBING TOPOGRAPHIC MAPS AND SYMBOLS IS

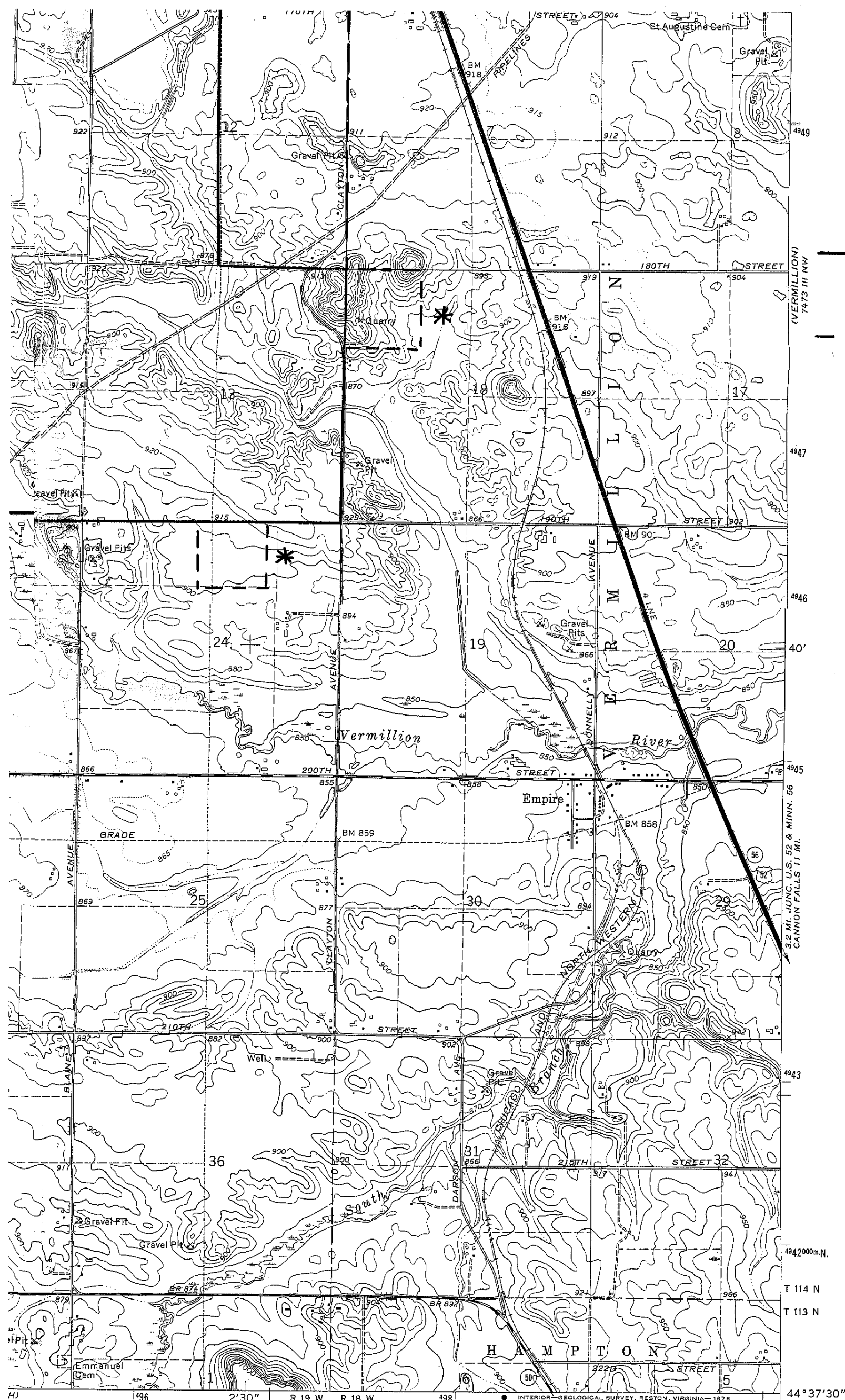
MINNESOTA  
ADMINISTRATION

COATES QUADRANGLE  
MINNESOTA-DAKOTA CO.  
7.5 MINUTE SERIES (TOPOGRAPHIC)  
NE 1/4 FARMINGTON 15' QUADRANGLE

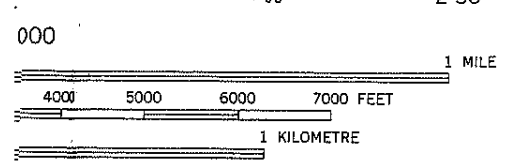
7473 IV SW  
(ST. PAUL PARK)



ATTACHMENT 1



- Present Boundary
- Past Boundary (Gopher)
- Approx. Boundary



10 FEET  
FOOT CONTOURS  
L DATUM OF 1929



MAP ACCURACY STANDARDS  
EY, RESTON, VIRGINIA 22092  
SYMBOLS IS AVAILABLE ON REQUEST

- ROAD CLASSIFICATION
- Primary highway, hard surface
  - Secondary highway, hard surface
  - Light-duty road, hard or improved surface
  - Unimproved road
  - Interstate Route
  - U. S. Route
  - State Route

COATES, MINN.  
NE/4 FARMINGTON 15' QUADRANGLE  
N4437.5-W9300/7.5

1974

AMS 7373 II NE-SERIES V872