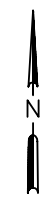
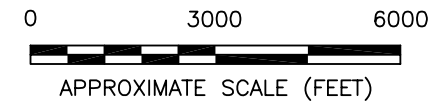



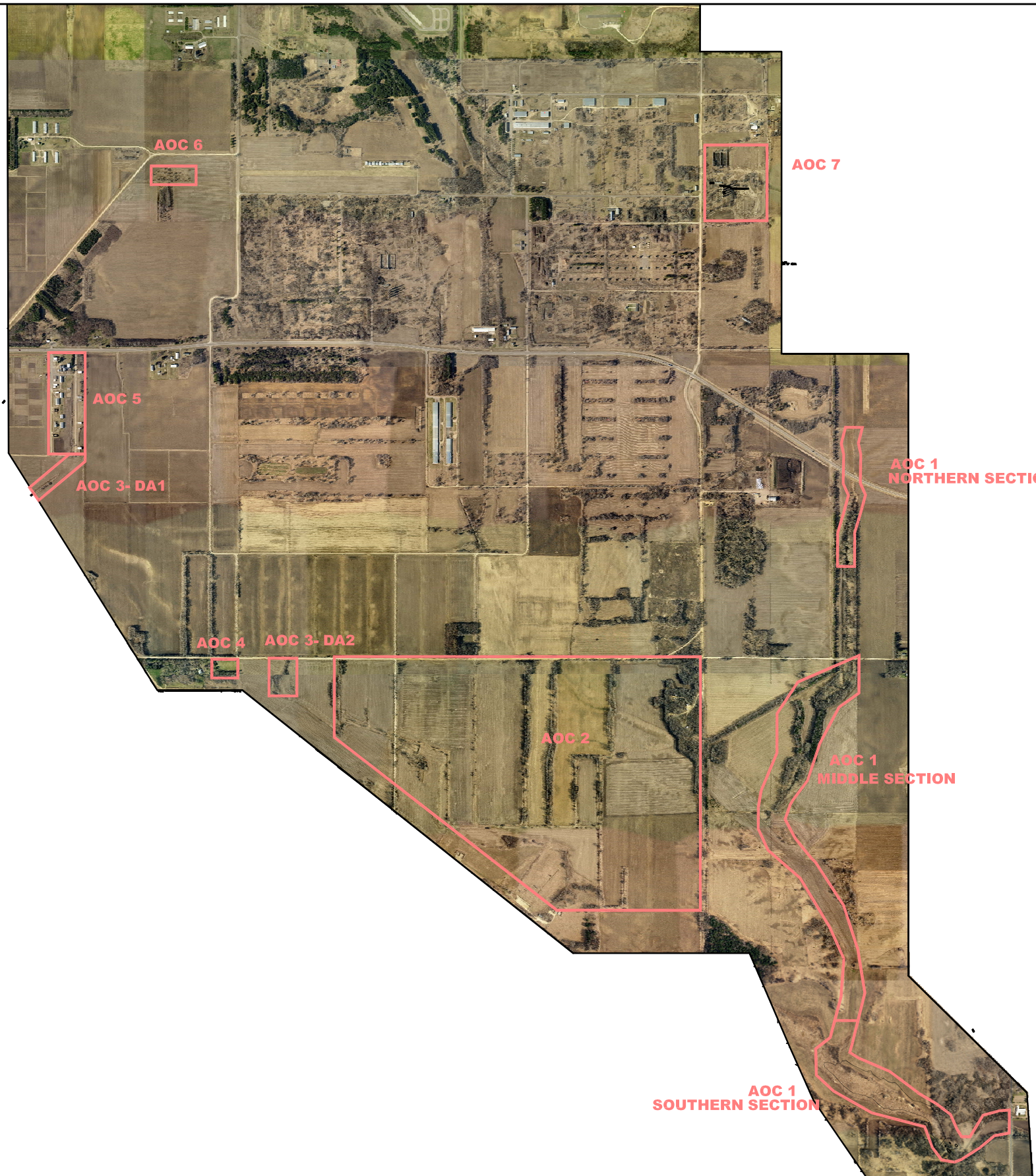
NOTE:  
AOC BOUNDARIES ARE APPROXIMATE.



SOURCE:  
USGS 7.5 MINUTE  
TOPOGRAPHIC MAP—  
COATES, MN  
QUADRANGLE

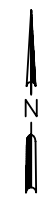
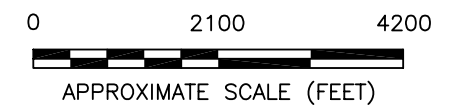



ENGR'G B.W.	DATE	 <b>BAY WEST Inc.</b> ENVIRONMENTAL SERVICES ST. PAUL, MN
DRAWN K.M.	2/26/07	
REV.		
PROJECT NAME GOPHER ORDNANCE		
TITLE SITE LOCATION MAP (SEGMENT "A")		
DWG. NO.	060631-T1	SCALE 1"=3000'
		FIGURE # 1

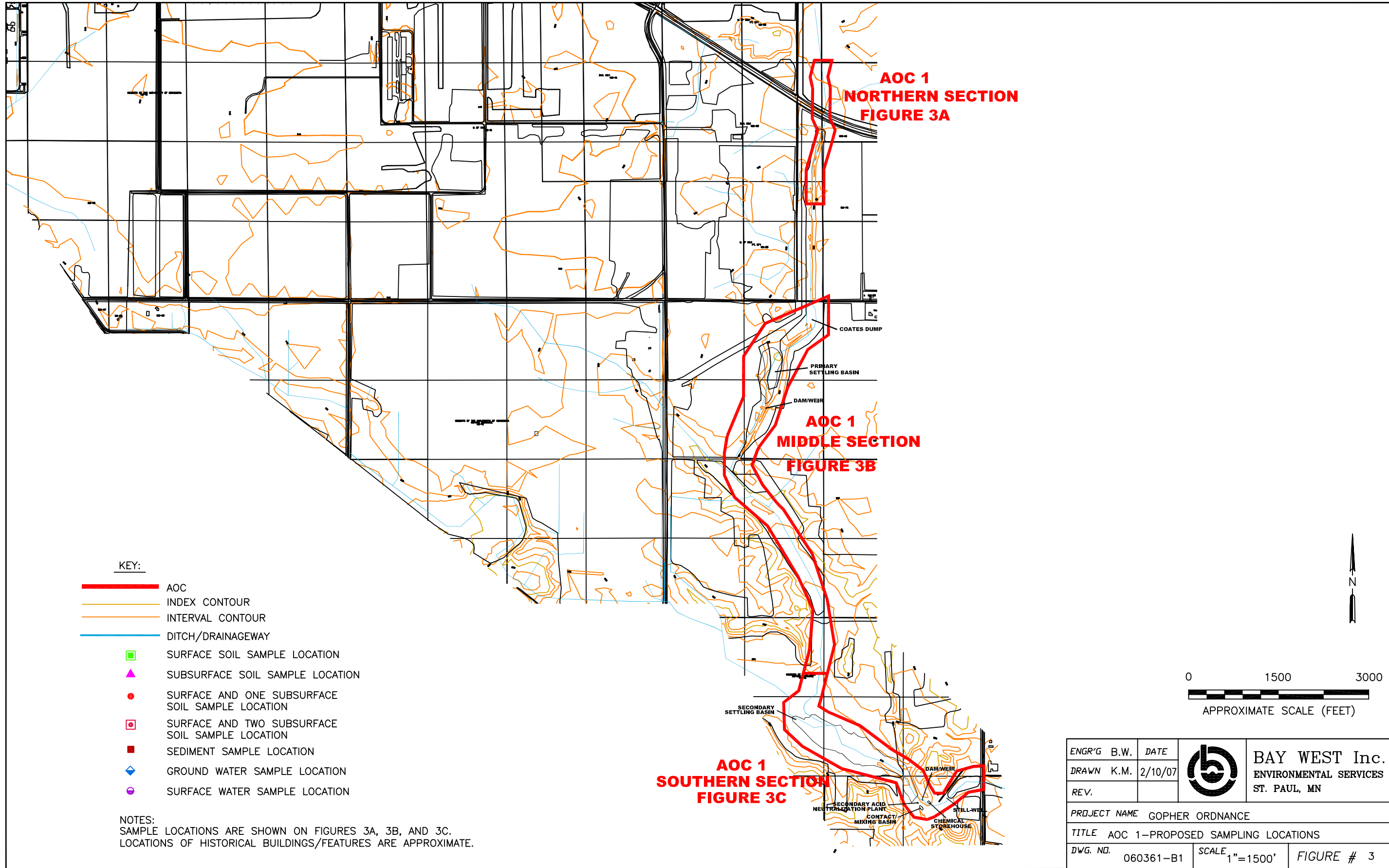


**KEY:**

- AOC 1- WASTE DISPOSAL DITCH, PRIMARY AND SECONDARY SETTLING PONDS
- AOC 2- SHIPPING/STORAGE BUILDINGS
- AOC 3- MISCELLANEOUS DRAINAGE AREAS
- AOC 4- SANITARY BUILDINGS
- AOC 5- DNT STORAGE BUNKERS
- AOC 6- 154TH STREET DISTURBED AREA
- AOC 7- STEAM PLANT AND ASSOCIATED 26.7 ACRES



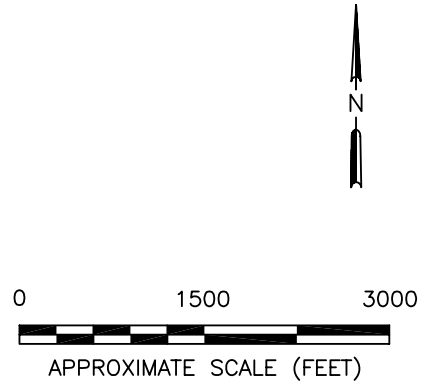
ENGR'G B.W.	DATE		<b>BAY WEST Inc.</b> ENVIRONMENTAL SERVICES ST. PAUL, MN
DRAWN K.M.	2/10/07		
REV.			
PROJECT NAME			GOPHER ORDNANCE
TITLE			AREAS OF CONCERN
DWG. NO.	060361-B1	SCALE	1"=2100' FIGURE # 2




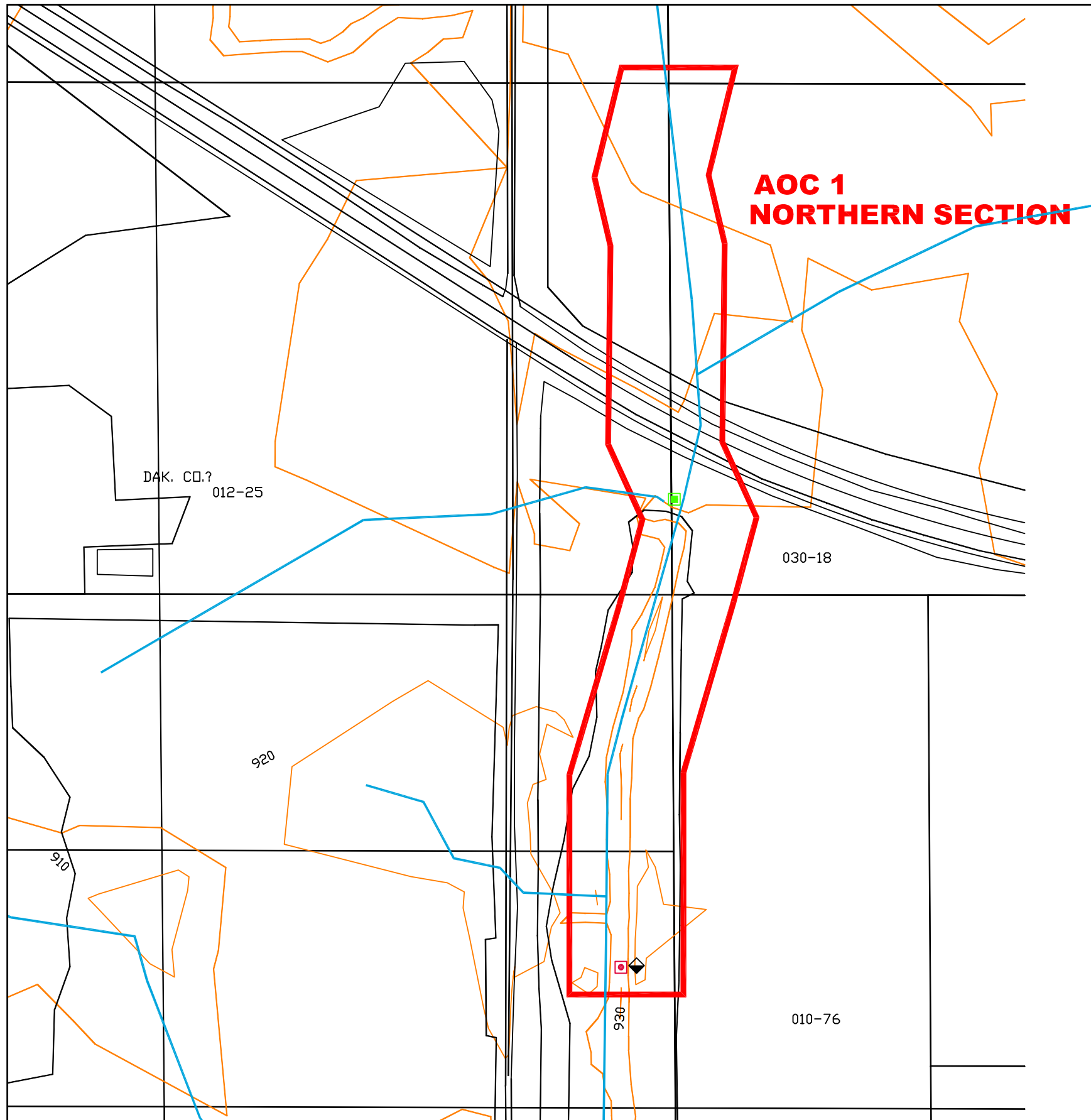
**KEY:**

- █ AOC
- INDEX CONTOUR
- INTERVAL CONTOUR
- DITCH/DRAINAGEWAY
- SURFACE SOIL SAMPLE LOCATION
- ▲ SUBSURFACE SOIL SAMPLE LOCATION
- SURFACE AND ONE SUBSURFACE SOIL SAMPLE LOCATION
- SURFACE AND TWO SUBSURFACE SOIL SAMPLE LOCATION
- SEDIMENT SAMPLE LOCATION
- ◆ GROUND WATER SAMPLE LOCATION
- SURFACE WATER SAMPLE LOCATION

NOTES:  
 SAMPLE LOCATIONS ARE SHOWN ON FIGURES 3A, 3B, AND 3C.  
 LOCATIONS OF HISTORICAL BUILDINGS/FEATURES ARE APPROXIMATE.



ENGR'G B.W.	DATE		BAY WEST Inc. ENVIRONMENTAL SERVICES ST. PAUL, MN
DRAWN K.M.	2/10/07		
REV.		PROJECT NAME GOPHER ORDNANCE	
TITLE AOC 1-PROPOSED SAMPLING LOCATIONS			
DWG. NO.	060361-B1	SCALE 1"=1500'	FIGURE # 3



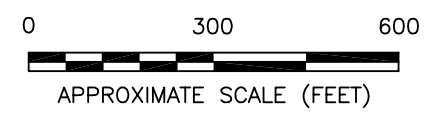
**AOC 1  
NORTHERN SECTION**


**KEY:**

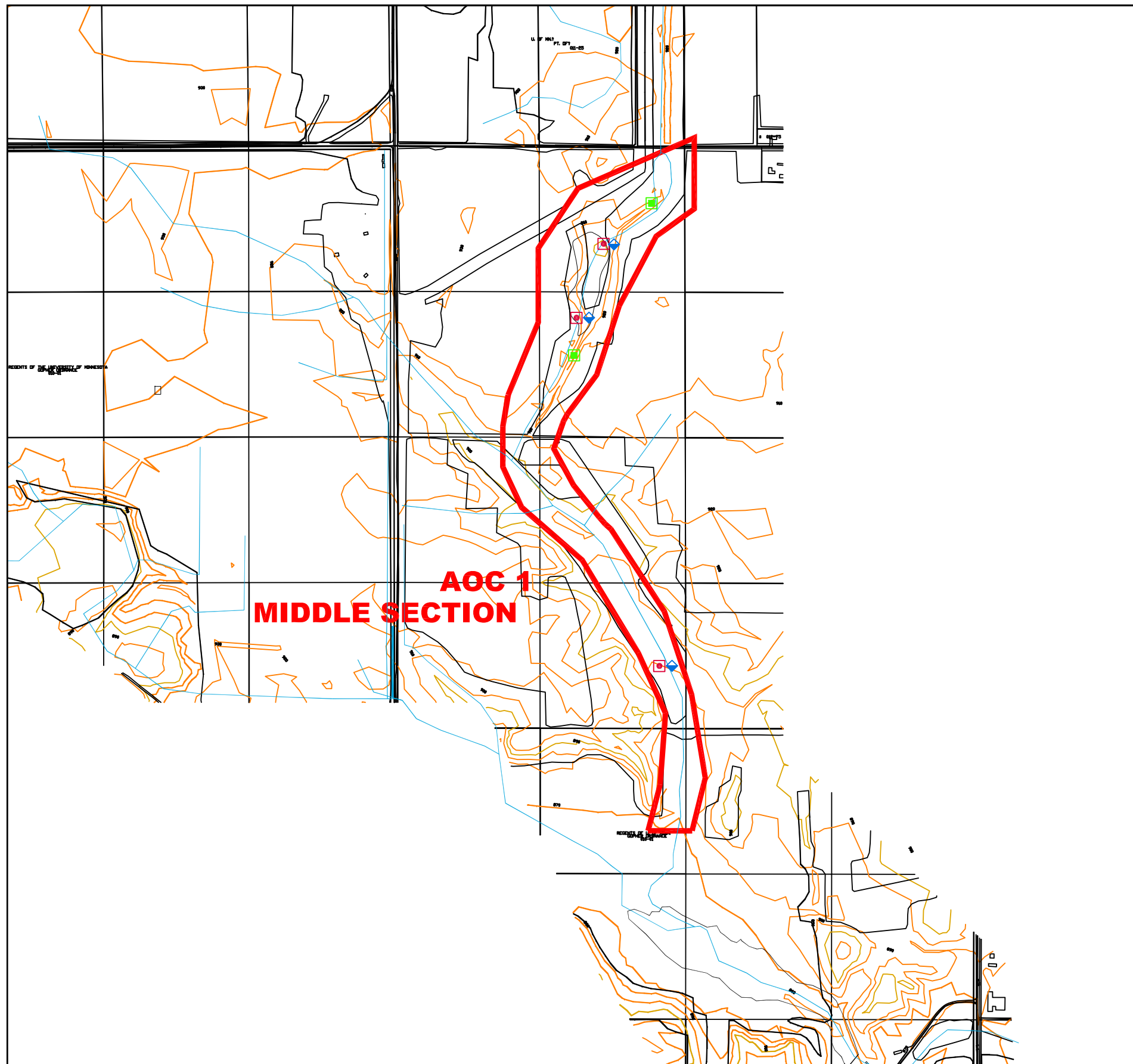
- ▬ AOC
- ▬ INDEX CONTOUR
- ▬ INTERVAL CONTOUR
- ▬ DITCH/DRAINAGEWAY
- SURFACE SOIL SAMPLE LOCATION
- ▲ SUBSURFACE SOIL SAMPLE LOCATION
- SURFACE AND ONE SUBSURFACE SOIL SAMPLE LOCATION
- ◻ SURFACE AND TWO SUBSURFACE SOIL SAMPLE LOCATION
- SEDIMENT SAMPLE LOCATION
- ◆ GROUND WATER SAMPLE LOCATION
- SURFACE WATER SAMPLE LOCATION

NOTE:  
LOCATIONS OF HISTORICAL BUILDINGS/FEATURES ARE APPROXIMATE.

AOC 1 (NORTHERN SECTION)	
MEDIA	# OF SAMPLES
WATER	1 (GROUND WATER)
SOIL	4 (2 SURFACE SOIL) (2 SUBSURFACE SOIL)



ENGR'G B.W.	DATE		<b>BAY WEST Inc.</b> ENVIRONMENTAL SERVICES ST. PAUL, MN
DRAWN K.M.	2/10/07		
REV.	5/2/07		
PROJECT NAME		GOPHER ORDNANCE	
TITLE		AOC 1-NORTHERN SECTION PROPOSED SAMPLING LOCATIONS	
DWG. NO.	060361-B1	SCALE	1"=300'
		FIGURE # 3A	

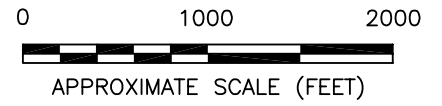


- KEY:**
- ▬ AOC
  - ▬ INDEX CONTOUR
  - ▬ INTERVAL CONTOUR
  - ▬ DITCH/DRAINAGEWAY
  - SURFACE SOIL SAMPLE LOCATION
  - ▲ SUBSURFACE SOIL SAMPLE LOCATION
  - SURFACE AND ONE SUBSURFACE SOIL SAMPLE LOCATION
  - SURFACE AND TWO SUBSURFACE SOIL SAMPLE LOCATION
  - SEDIMENT SAMPLE LOCATION
  - ◆ GROUND WATER SAMPLE LOCATION
  - SURFACE WATER SAMPLE LOCATION

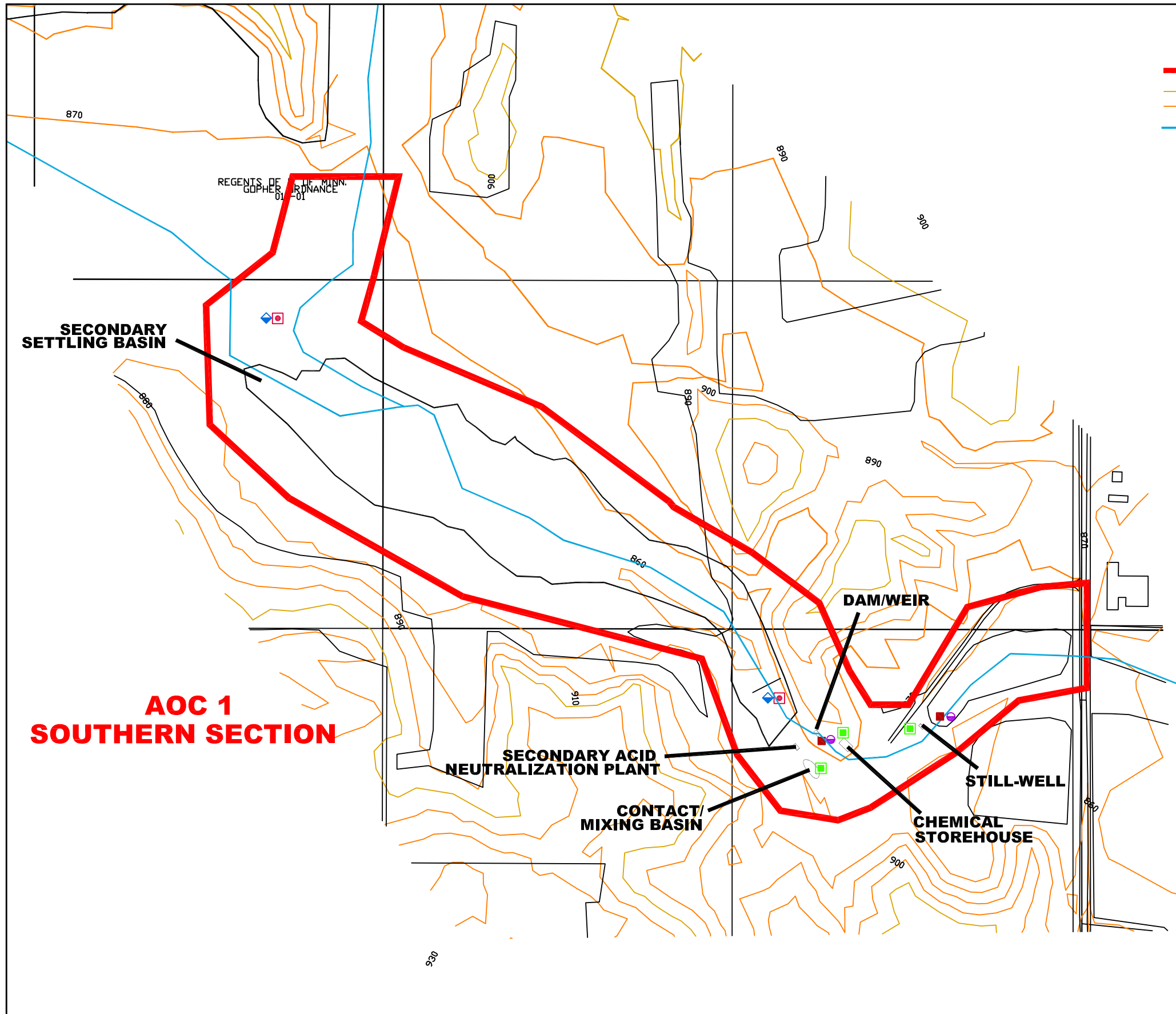
NOTE:  
LOCATIONS OF HISTORICAL BUILDINGS/FEATURES ARE APPROXIMATE.

**AOC 1  
MIDDLE SECTION**

AOC 1 (MIDDLE SECTION)	
MEDIA	# OF SAMPLES
WATER	3 (3 GROUND WATER)
SOIL	11 (5 SURFACE SOIL) (6 SUBSURFACE SOIL)



ENGR'G B.W.	DATE		<b>BAY WEST Inc.</b> ENVIRONMENTAL SERVICES ST. PAUL, MN
DRAWN K.M.	2/10/07		
REV.	5/2/07		
PROJECT NAME GOPHER ORDNANCE			
TITLE AOC 1-MIDDLE SECTION PROPOSED SAMPLING LOCATIONS			
DWG. NO.	060361-B1	SCALE 1"=1000'	FIGURE # 3B



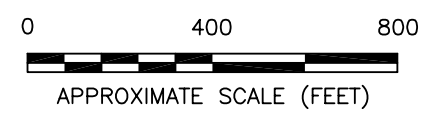
**KEY:**

- AOC
- INDEX CONTOUR
- INTERVAL CONTOUR
- DITCH/DRAINAGEWAY
- SURFACE SOIL SAMPLE LOCATION
- ▲ SUBSURFACE SOIL SAMPLE LOCATION
- SURFACE AND ONE SUBSURFACE SOIL SAMPLE LOCATION
- SURFACE AND TWO SUBSURFACE SOIL SAMPLE LOCATION
- SEDIMENT SAMPLE LOCATION
- ◆ GROUND WATER SAMPLE LOCATION
- SURFACE WATER SAMPLE LOCATION

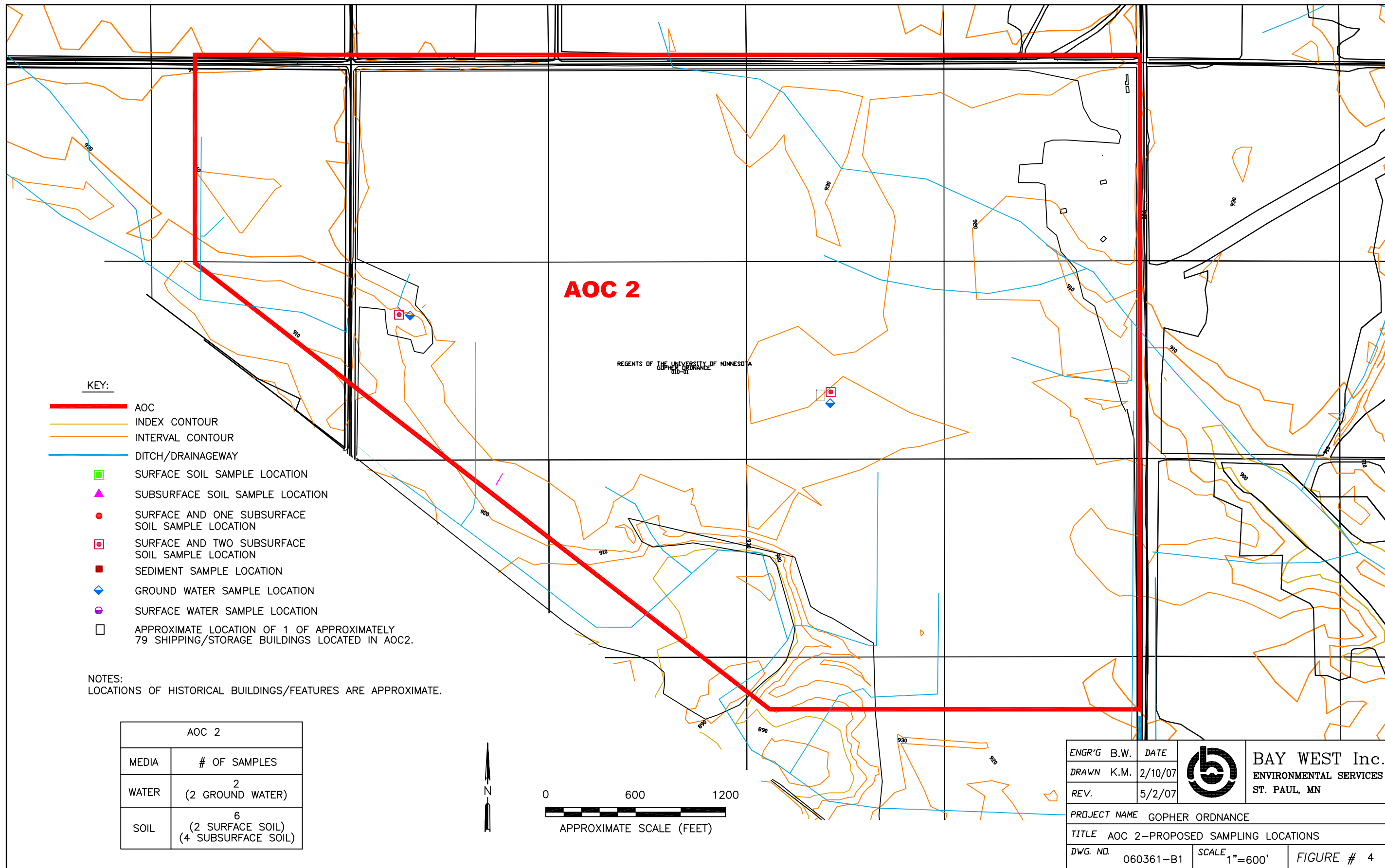
NOTE:  
LOCATIONS OF HISTORICAL BUILDINGS/FEATURES ARE APPROXIMATE.

**AOC 1  
SOUTHERN SECTION**

AOC 1 (SOUTHERN SECTION)	
MEDIA	# OF SAMPLES
WATER	4 (2 GROUND WATER) (2 SURFACE WATER)
SOIL	11 (5 SURFACE SOIL) (4 SUBSURFACE SOIL) (2 SEDIMENT)



ENGR'G B.W.	DATE		<b>BAY WEST Inc.</b> ENVIRONMENTAL SERVICES ST. PAUL, MN
DRAWN K.M.	2/10/07		
REV.	5/2/07		
PROJECT NAME GOPHER ORDNANCE			
TITLE AOC 1-SOUTHERN SECTION PROPOSED SAMPLING LOCATIONS			
DWG. NO.	060361-B1	SCALE 1"=400'	FIGURE # 3C




**KEY:**

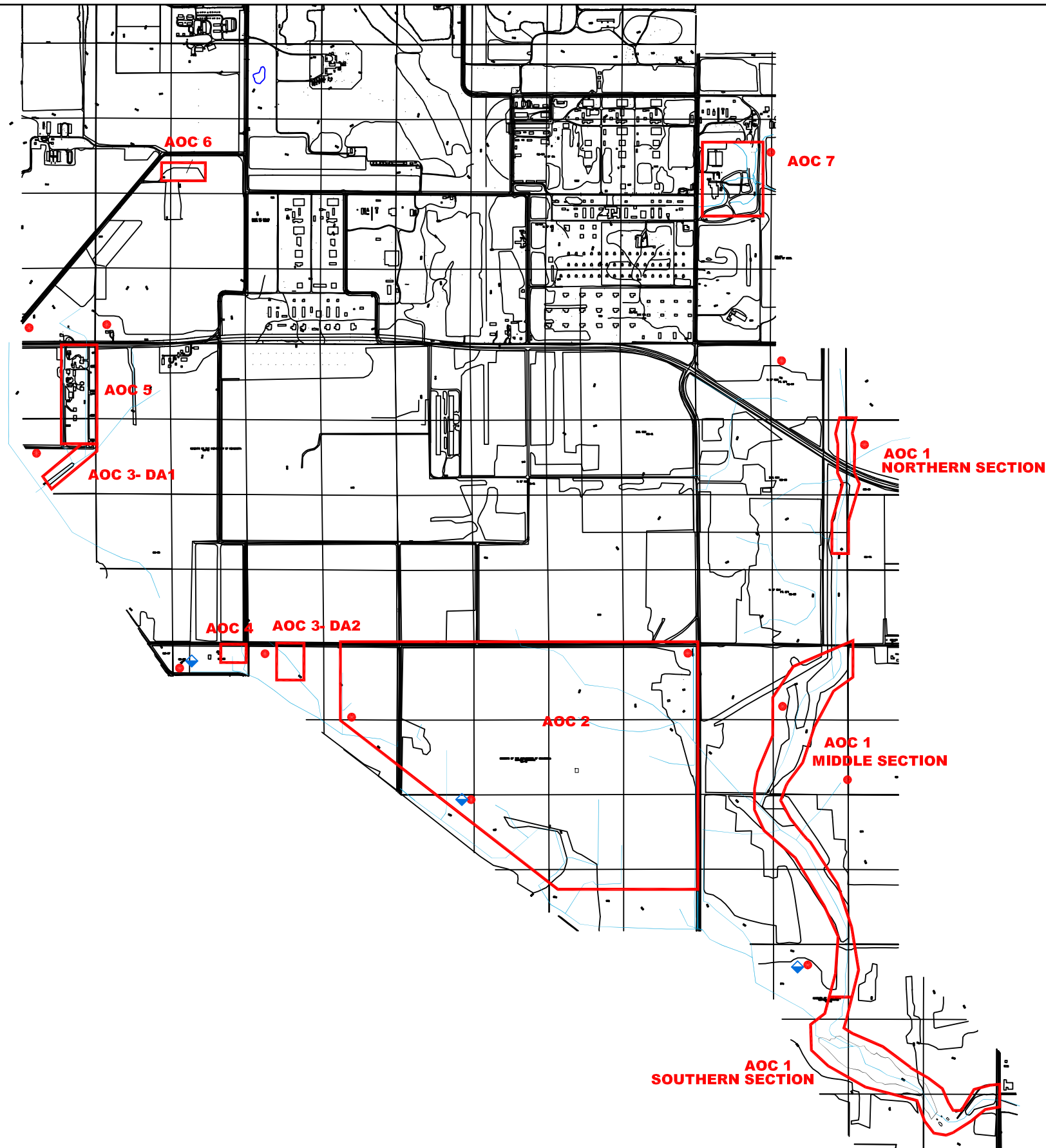
- █ AOC
- INDEX CONTOUR
- INTERVAL CONTOUR
- DITCH/DRAINAGEWAY
- SURFACE SOIL SAMPLE LOCATION
- ▲ SUBSURFACE SOIL SAMPLE LOCATION
- SURFACE AND ONE SUBSURFACE SOIL SAMPLE LOCATION
- SURFACE AND TWO SUBSURFACE SOIL SAMPLE LOCATION
- SEDIMENT SAMPLE LOCATION
- ◆ GROUND WATER SAMPLE LOCATION
- SURFACE WATER SAMPLE LOCATION
- APPROXIMATE LOCATION OF 1 OF APPROXIMATELY 79 SHIPPING/STORAGE BUILDINGS LOCATED IN AOC2.

NOTES:  
LOCATIONS OF HISTORICAL BUILDINGS/FEATURES ARE APPROXIMATE.

AOC 2	
MEDIA	# OF SAMPLES
WATER	2 (2 GROUND WATER)
SOIL	6 (2 SURFACE SOIL) (4 SUBSURFACE SOIL)



ENGR'G B.W.	DATE		<b>BAY WEST Inc.</b> ENVIRONMENTAL SERVICES ST. PAUL, MN
DRAWN K.M.	2/10/07		
REV.	5/2/07		
PROJECT NAME		GOPHER ORDNANCE	
TITLE		AOC 2—PROPOSED SAMPLING LOCATIONS	
DWG. NO.	060361-B1	SCALE	1"=600'
		FIGURE #	4



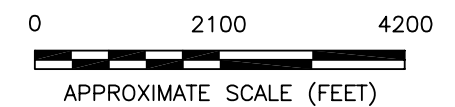
KEY:


- AOC 1- WASTE DISPOSAL DITCH, PRIMARY AND SECONDARY SETTLING PONDS
- AOC 2- SHIPPING/STORAGE BUILDINGS
- AOC 3- MISCELLANEOUS DRAINAGE AREAS
- AOC 4- SANITARY BUILDINGS
- AOC 5- DNT STORAGE BUNKERS
- AOC 6- 154TH STREET DISTURBED AREA
- AOC 7- STEAM PLANT AND ASSOCIATED 26.7 ACRES

KEY:

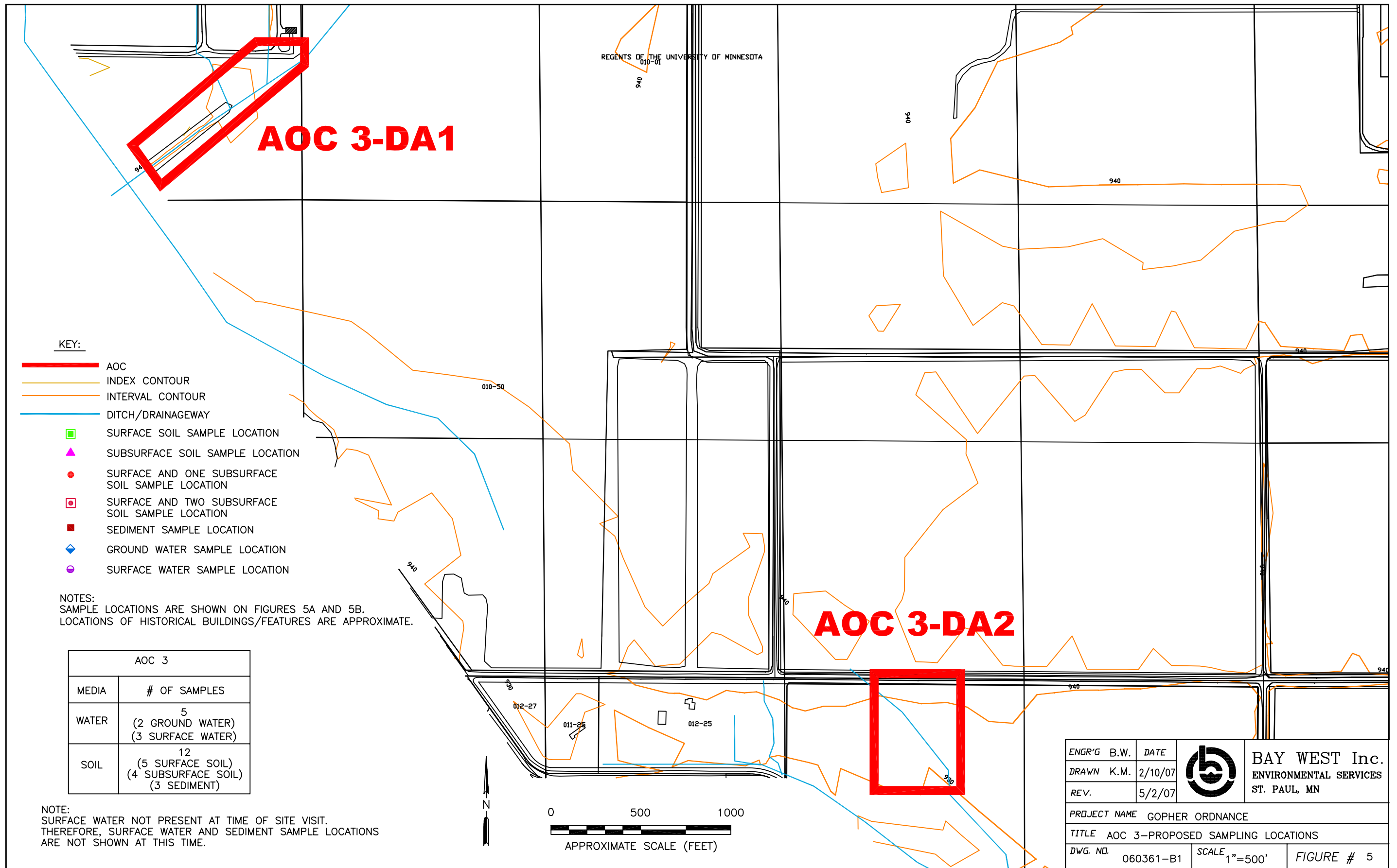
- AOC
- DITCH/DRAINAGEWAY
- SURFACE SOIL SAMPLE LOCATION
- ▲ SUBSURFACE SOIL SAMPLE LOCATION
- SURFACE AND ONE SUBSURFACE SOIL SAMPLE LOCATION
- SURFACE AND TWO SUBSURFACE SOIL SAMPLE LOCATION
- SEDIMENT SAMPLE LOCATION
- ◆ GROUND WATER SAMPLE LOCATION
- SURFACE WATER SAMPLE LOCATION

BACKGROUND	
MEDIA	# OF SAMPLES
WATER	3 (3 GROUND WATER)
SOIL	28 (14 SURFACE SOIL) 14 SUBSURFACE SOIL)



ENGR'G B.W.	DATE		<b>BAY WEST Inc.</b> ENVIRONMENTAL SERVICES ST. PAUL, MN
DRAWN K.M.	2/10/07		
REV.			
PROJECT NAME GOPHER ORDNANCE			
TITLE BACKGROUND SAMPLE LOCATIONS			
DWG. NO.	060361-B1	SCALE 1"=2100'	FIGURE # 10





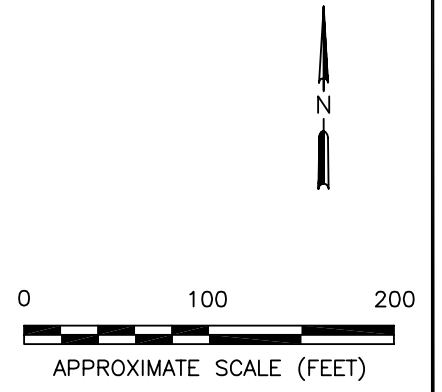
# AOC 3-DA1

940

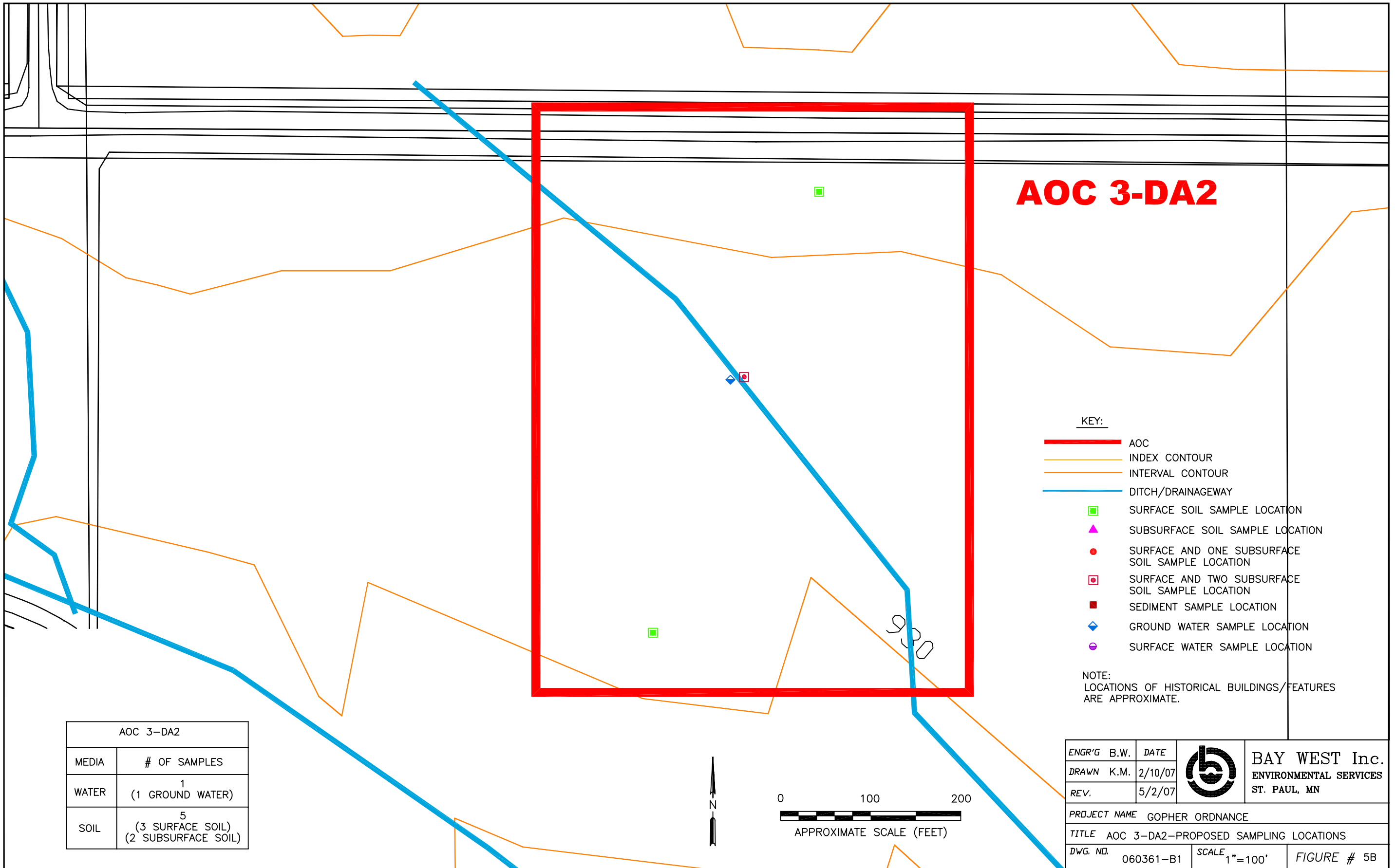
- KEY:**
- AOC
  - INDEX CONTOUR
  - INTERVAL CONTOUR
  - DITCH/DRAINAGEWAY
  - SURFACE SOIL SAMPLE LOCATION
  - ▲ SUBSURFACE SOIL SAMPLE LOCATION
  - SURFACE AND ONE SUBSURFACE SOIL SAMPLE LOCATION
  - ◻ SURFACE AND TWO SUBSURFACE SOIL SAMPLE LOCATION
  - SEDIMENT SAMPLE LOCATION
  - ◆ GROUND WATER SAMPLE LOCATION
  - SURFACE WATER SAMPLE LOCATION

NOTE:  
LOCATIONS OF HISTORICAL BUILDINGS/FEATURES ARE APPROXIMATE.

AOC3-DA1	
MEDIA	# OF SAMPLES
WATER	1 (1 GROUND WATER)
SOIL	3 (1 SURFACE SOIL) (2 SUBSURFACE SOIL)



ENGR'G B.W.	DATE		<b>BAY WEST Inc.</b> ENVIRONMENTAL SERVICES ST. PAUL, MN
DRAWN K.M.	2/10/07		
REV.	5/2/07		
PROJECT NAME		GOPHER ORDNANCE	
TITLE		AOC 3-DA1-PROPOSED SAMPLING LOCATIONS	
DWG. NO.	060361-B1	SCALE 1"=100'	FIGURE # 5A



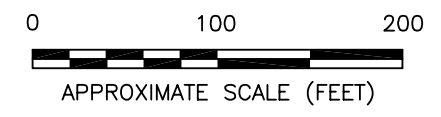
# AOC 3-DA2

**KEY:**

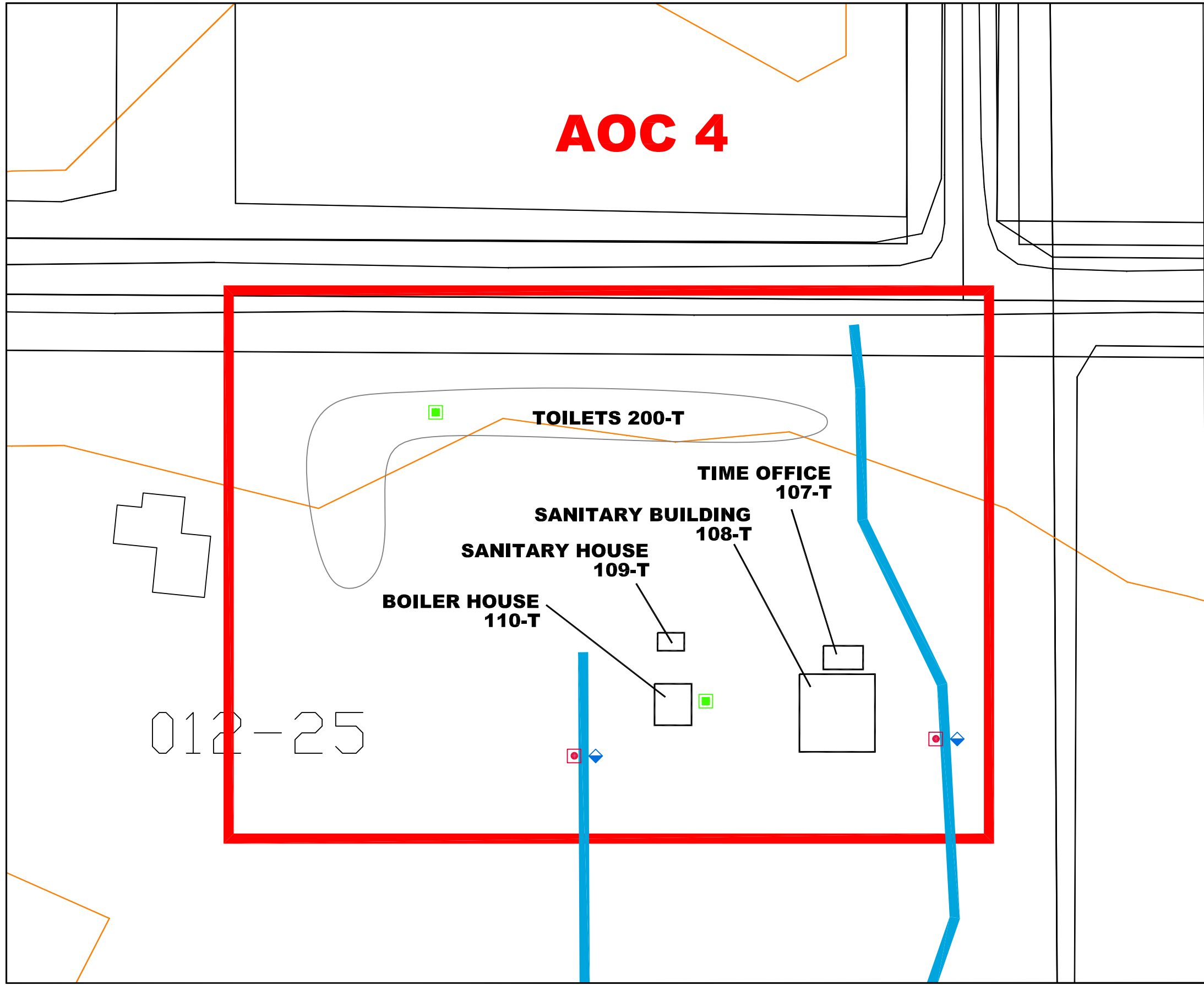
- AOC
- INDEX CONTOUR
- INTERVAL CONTOUR
- DITCH/DRAINAGEWAY
- SURFACE SOIL SAMPLE LOCATION
- ▲ SUBSURFACE SOIL SAMPLE LOCATION
- SURFACE AND ONE SUBSURFACE SOIL SAMPLE LOCATION
- SURFACE AND TWO SUBSURFACE SOIL SAMPLE LOCATION
- SEDIMENT SAMPLE LOCATION
- ◆ GROUND WATER SAMPLE LOCATION
- SURFACE WATER SAMPLE LOCATION

NOTE:  
LOCATIONS OF HISTORICAL BUILDINGS/FEATURES ARE APPROXIMATE.

AOC 3-DA2	
MEDIA	# OF SAMPLES
WATER	1 (1 GROUND WATER)
SOIL	5 (3 SURFACE SOIL) (2 SUBSURFACE SOIL)



ENGR'G B.W.	DATE		<b>BAY WEST Inc.</b> ENVIRONMENTAL SERVICES ST. PAUL, MN
DRAWN K.M.	2/10/07		
REV.	5/2/07		
PROJECT NAME		GOPHER ORDNANCE	
TITLE		AOC 3-DA2-PROPOSED SAMPLING LOCATIONS	
DWG. NO.	060361-B1	SCALE 1"=100'	FIGURE # 5B



# AOC 4

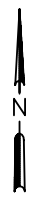
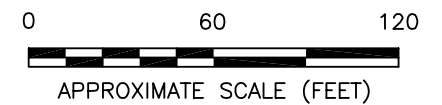
012-25

**KEY:**

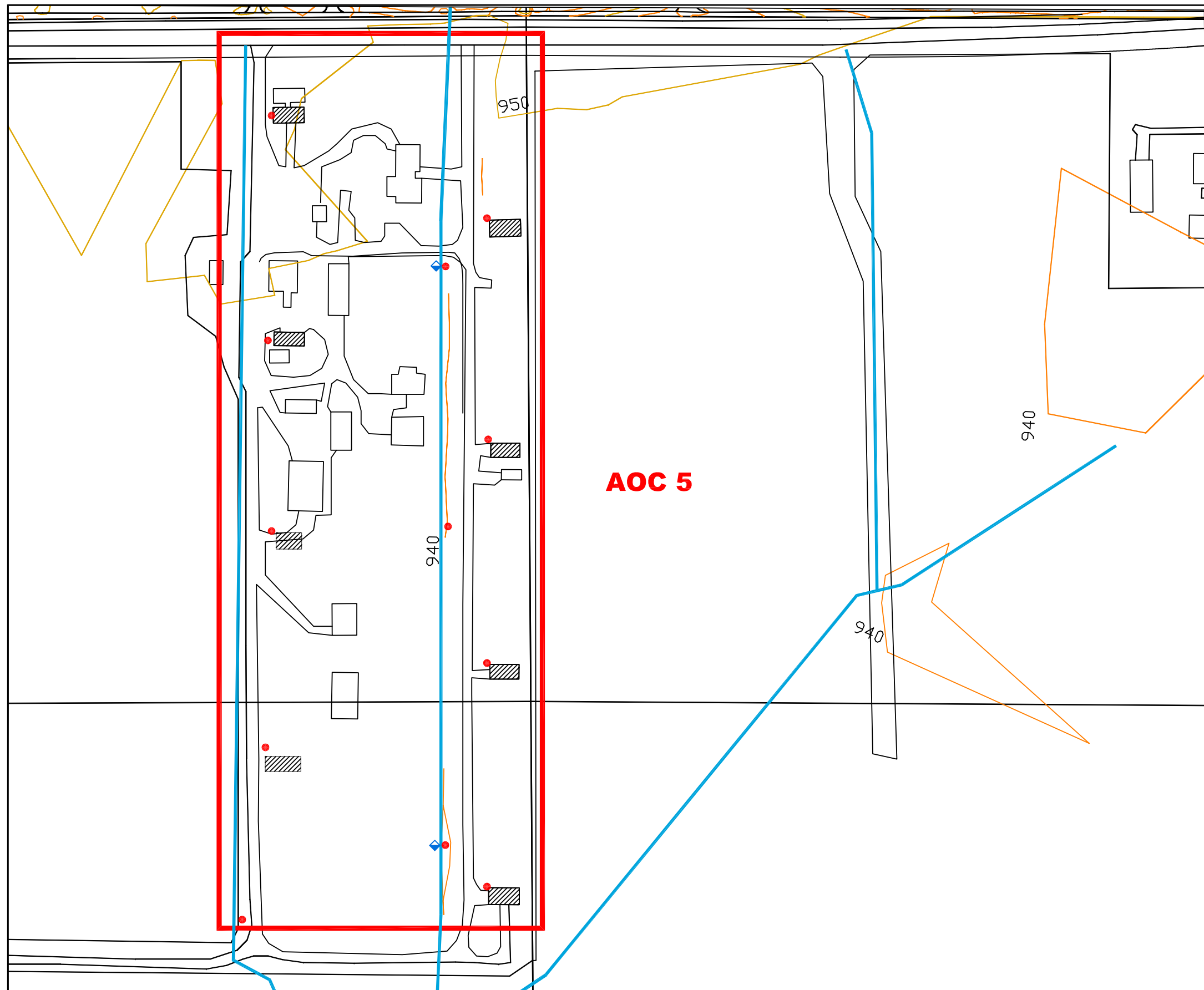
- AOC
- INDEX CONTOUR
- INTERVAL CONTOUR
- DITCH/DRAINAGEWAY
- SURFACE SOIL SAMPLE LOCATION
- ▲ SUBSURFACE SOIL SAMPLE LOCATION
- SURFACE AND ONE SUBSURFACE SOIL SAMPLE LOCATION
- SURFACE AND TWO SUBSURFACE SOIL SAMPLE LOCATION
- SEDIMENT SAMPLE LOCATION
- ◆ GROUND WATER SAMPLE LOCATION
- SURFACE WATER SAMPLE LOCATION

NOTE:  
LOCATIONS OF HISTORICAL BUILDINGS/FEATURES ARE APPROXIMATE.

AOC 4	
MEDIA	# OF SAMPLES
WATER	2 (2 GROUND WATER)
SOIL	8 (4 SURFACE SOIL) (4 SUBSURFACE SOIL)



ENGR'G B.W.	DATE		<b>BAY WEST Inc.</b> ENVIRONMENTAL SERVICES ST. PAUL, MN
DRAWN	K.M. 2/10/07		
REV.	5/2/07		
PROJECT NAME GOPHER ORDNANCE			
TITLE AOC 4-PROPOSED SAMPLING LOCATIONS			
DWG. NO.	060361-B1	SCALE 1"=60'	FIGURE # 6

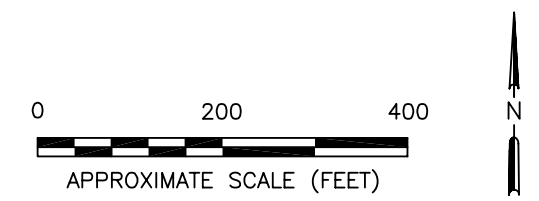


**KEY:**

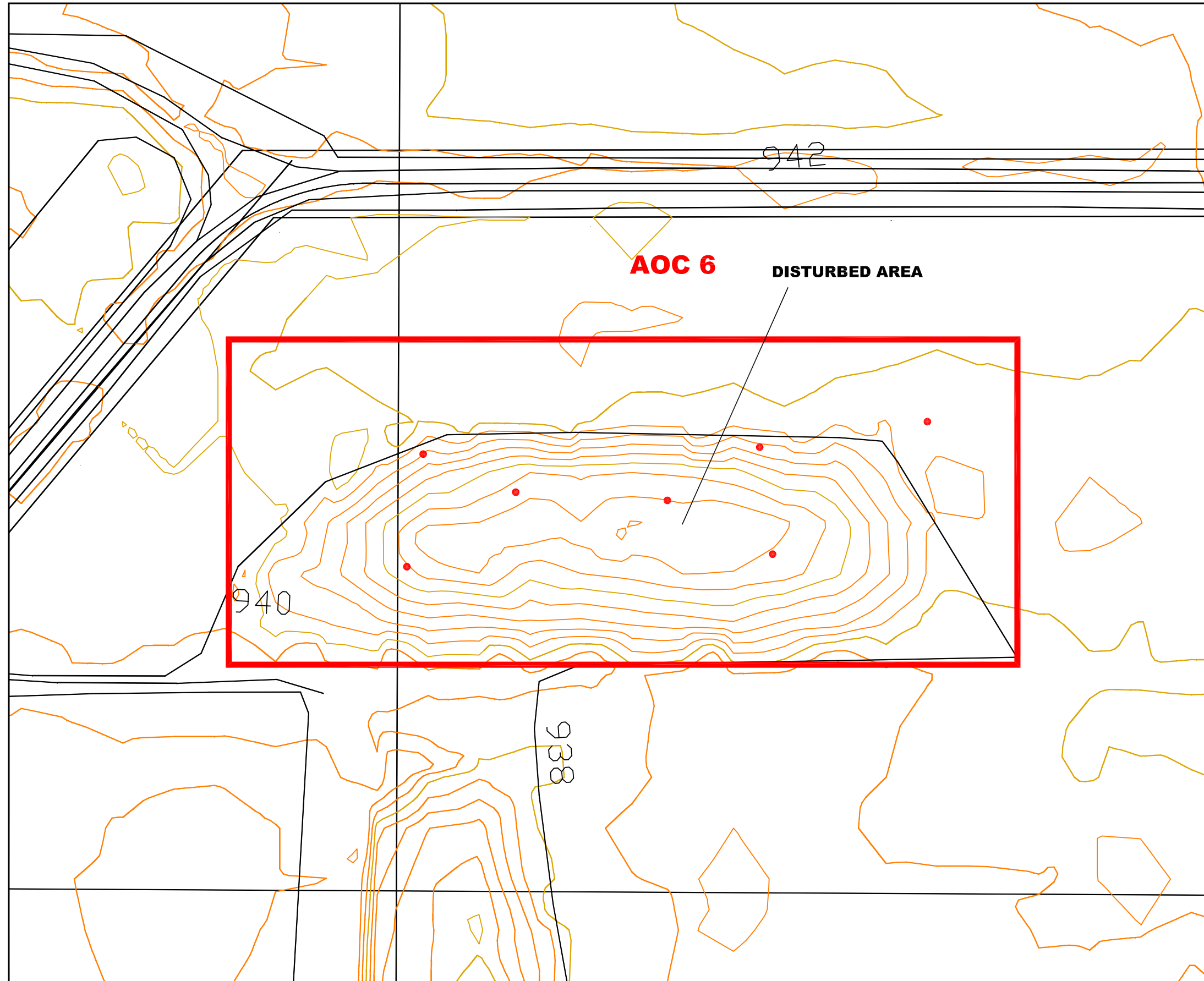
- █ AOC
- INDEX CONTOUR
- INTERVAL CONTOUR
- DITCH/DRAINAGWAY
- SURFACE SOIL SAMPLE LOCATION
- ▲ SUBSURFACE SOIL SAMPLE LOCATION
- SURFACE AND ONE SUBSURFACE SOIL SAMPLE LOCATION
- SURFACE AND TWO SUBSURFACE SOIL SAMPLE LOCATION
- SEDIMENT SAMPLE LOCATION
- ◆ GROUND WATER SAMPLE LOCATION
- SURFACE WATER SAMPLE LOCATION
- DNR STORAGE BUNKERS

**NOTE:**  
LOCATIONS OF HISTORICAL BUILDINGS/FEATURES ARE APPROXIMATE.

AOC 5	
MEDIA	# OF SAMPLES
WATER	2 (2 GROUND WATER)
SOIL	24 (12 SURFACE SOIL) (12 SUBSURFACE SOIL)



ENGR'G B.W.	DATE		<b>BAY WEST Inc.</b> ENVIRONMENTAL SERVICES ST. PAUL, MN
DRAWN K.M.	2/10/07		
REV.	5/2/07		
PROJECT NAME GOPHER ORDNANCE			
TITLE AOC 5-PROPOSED SAMPLING LOCATIONS			
DWG. NO.	060361-B1	SCALE 1"=200'	FIGURE # 7

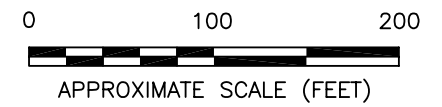


**KEY:**

- █ AOC
- INDEX CONTOUR
- INTERVAL CONTOUR
- DITCH/DRAINAGEWAY
- SURFACE SOIL SAMPLE LOCATION
- ▲ SUBSURFACE SOIL SAMPLE LOCATION
- SURFACE AND ONE SUBSURFACE SOIL SAMPLE LOCATION
- SURFACE AND TWO SUBSURFACE SOIL SAMPLE LOCATION
- SEDIMENT SAMPLE LOCATION
- ◆ GROUND WATER SAMPLE LOCATION
- SURFACE WATER SAMPLE LOCATION

NOTE:  
LOCATIONS OF HISTORICAL BUILDINGS/FEATURES ARE APPROXIMATE.

AOC 6	
MEDIA	# OF SAMPLES
WATER	0
SOIL	12 (6 SURFACE SOIL) (6 SUBSURFACE SOIL)

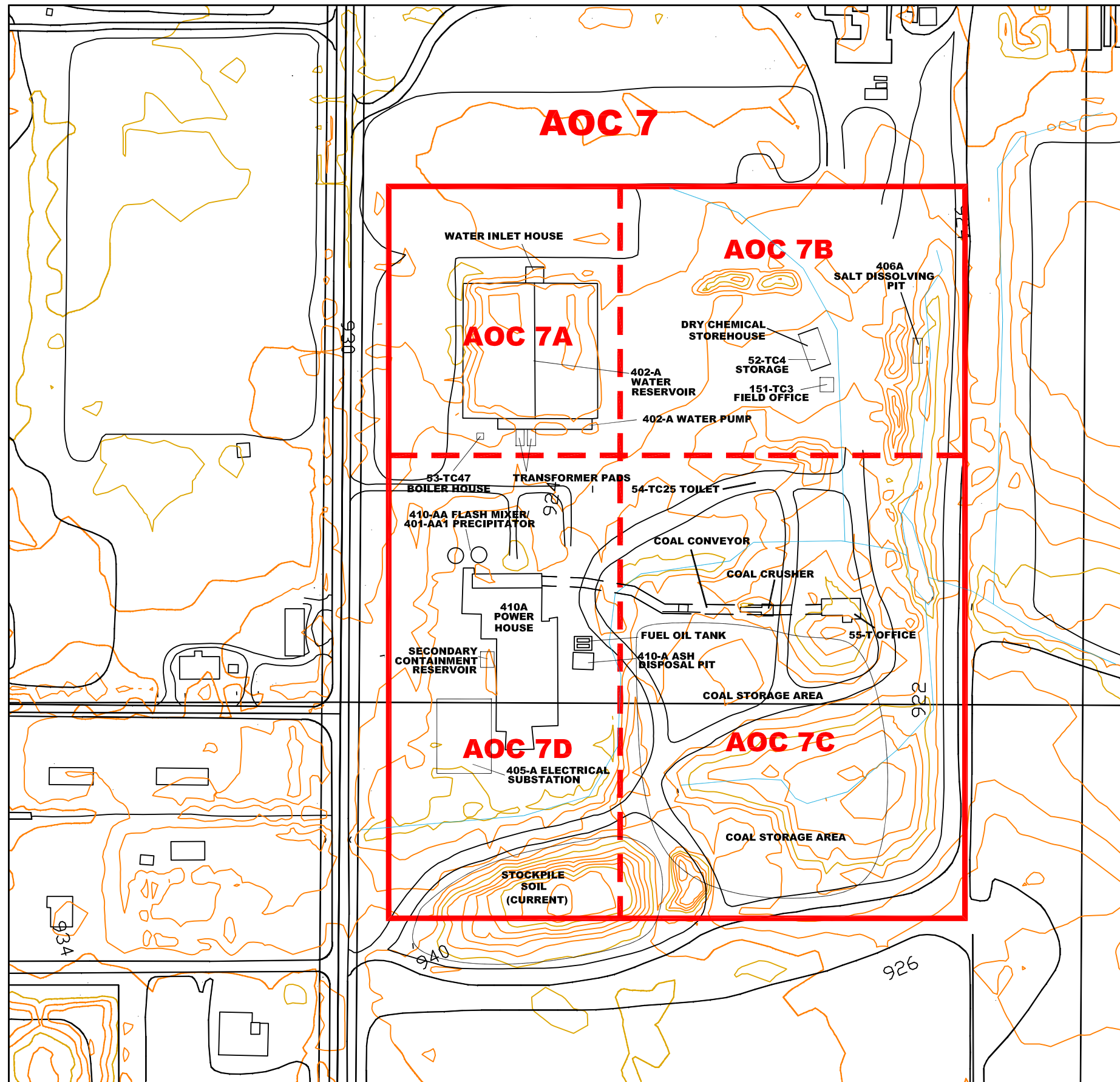


ENGR'G B.W.	DATE
DRAWN K.M.	2/10/07
REV.	5/2/07



**BAY WEST Inc.**  
ENVIRONMENTAL SERVICES  
ST. PAUL, MN

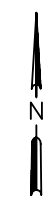
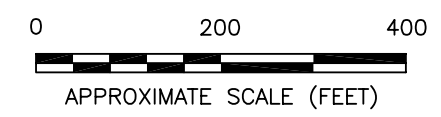
PROJECT NAME GOPHER ORDNANCE		
TITLE AOC 6-PROPOSED SAMPLING LOCATIONS		
DWG. NO. 060361-B1	SCALE 1"=100'	FIGURE # 8



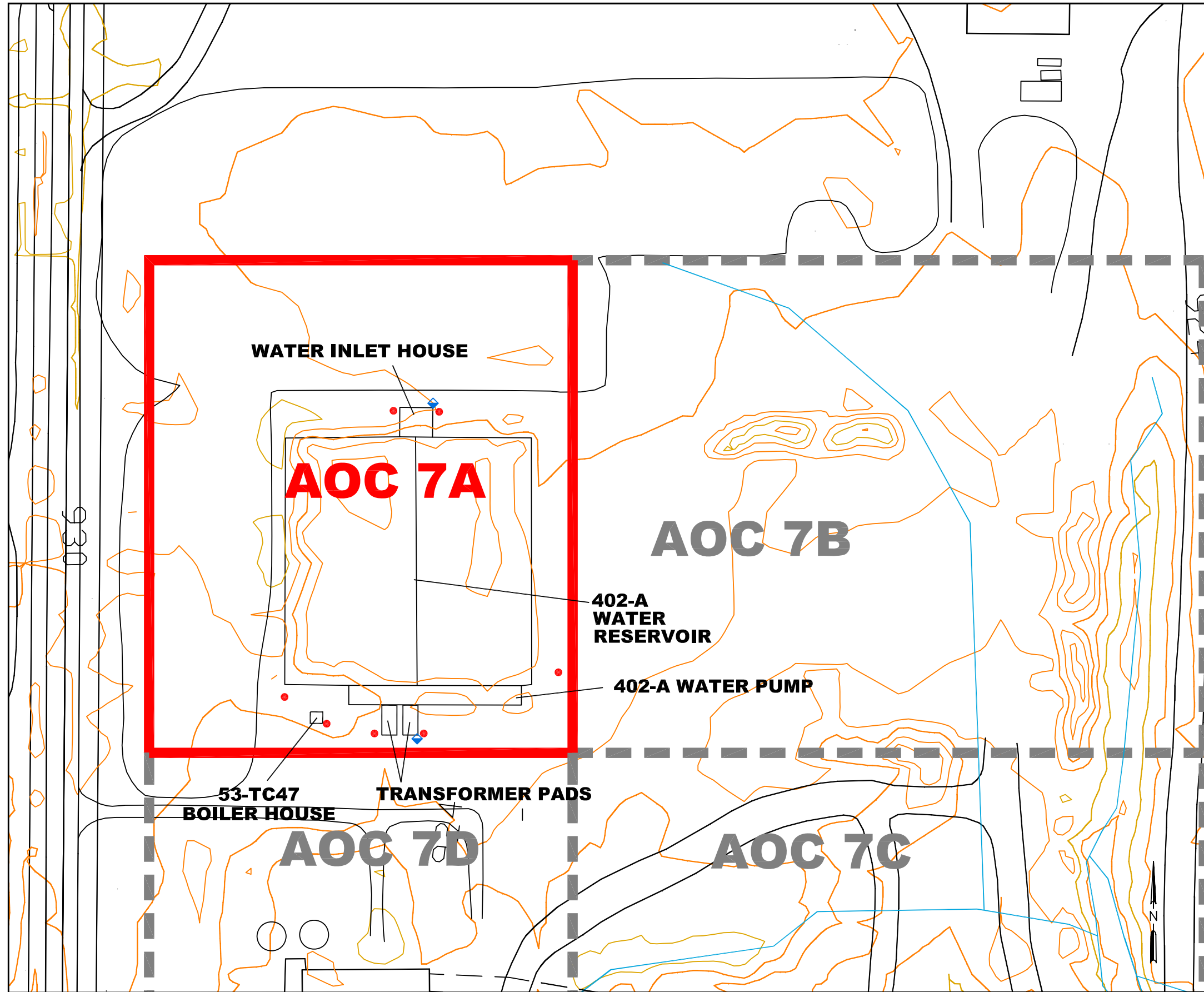
**KEY:**

- AOC
- INDEX CONTOUR
- INTERVAL CONTOUR
- DITCH/DRAINAGEWAY
- SURFACE SOIL SAMPLE LOCATION
- ▲ SUBSURFACE SOIL SAMPLE LOCATION
- SURFACE AND ONE SUBSURFACE SOIL SAMPLE LOCATION
- ◻ SURFACE AND TWO SUBSURFACE SOIL SAMPLE LOCATION
- SEDIMENT SAMPLE LOCATION
- ◆ GROUND WATER SAMPLE LOCATION
- SURFACE WATER SAMPLE LOCATION

NOTES:  
 SAMPLE LOCATIONS ARE SHOWN ON FIGURES 9A, 9B, 9C, AND 9D.  
 LOCATIONS OF HISTORICAL BUILDINGS/FEATURES ARE APPROXIMATE.



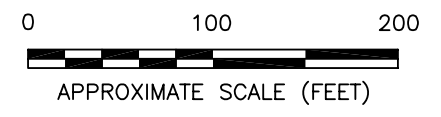
ENGR'G B.W.	DATE		<b>BAY WEST Inc.</b> ENVIRONMENTAL SERVICES ST. PAUL, MN
DRAWN K.M.	2/10/07		
REV.	5/2/07		
PROJECT NAME GOPHER ORDNANCE			
TITLE AOC 7-PROPOSED SAMPLING LOCATIONS			
DWG. NO. 060361-B1	SCALE 1"=200'	FIGURE # 9	




- KEY:**
- AOC
  - INDEX CONTOUR
  - INTERVAL CONTOUR
  - DITCH/DRAINAGEWAY
  - SURFACE SOIL SAMPLE LOCATION
  - ▲ SUBSURFACE SOIL SAMPLE LOCATION
  - SURFACE AND ONE SUBSURFACE SOIL SAMPLE LOCATION
  - SURFACE AND TWO SUBSURFACE SOIL SAMPLE LOCATION
  - SEDIMENT SAMPLE LOCATION
  - ◆ GROUND WATER SAMPLE LOCATION
  - SURFACE WATER SAMPLE LOCATION

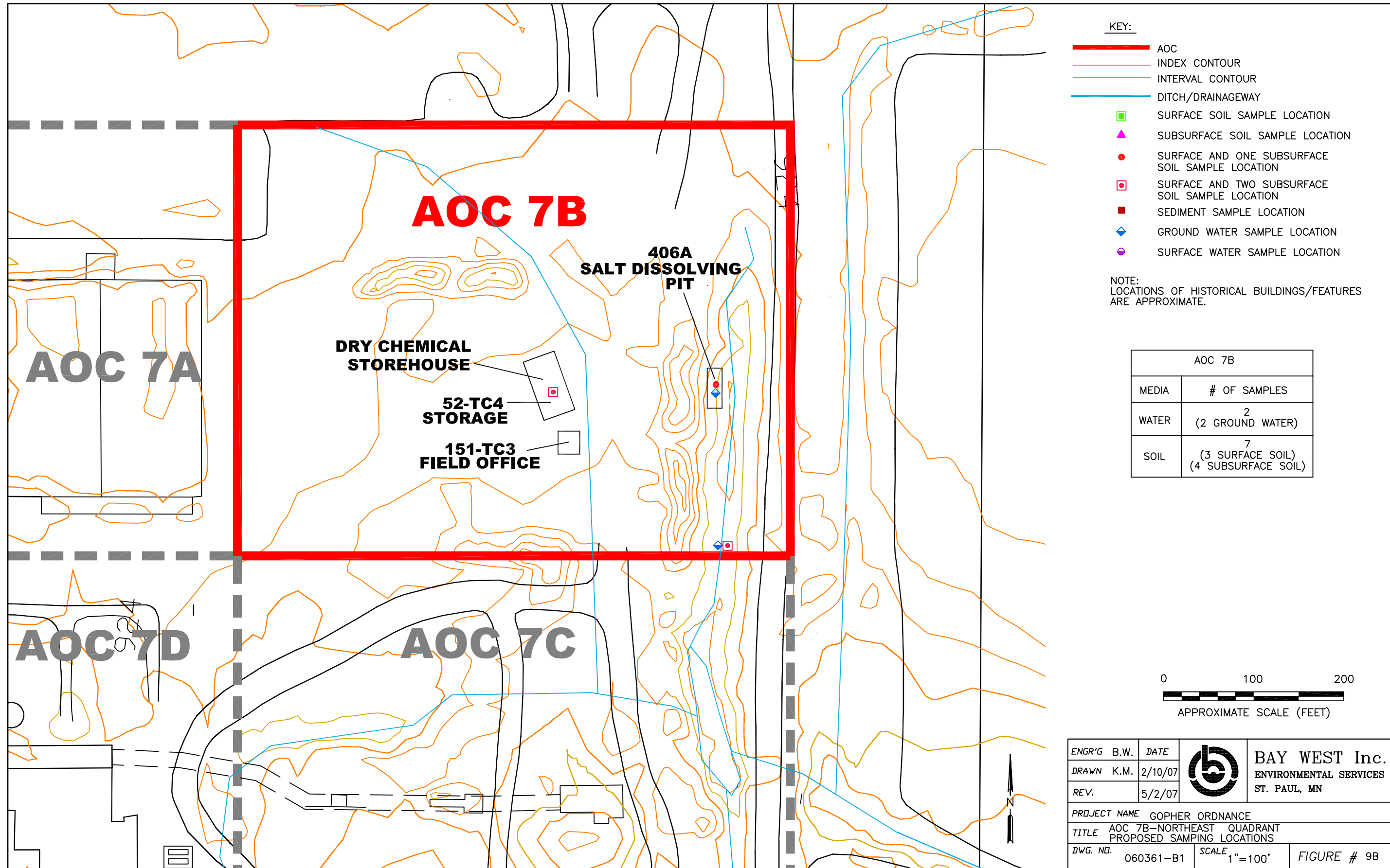
NOTE:  
LOCATIONS OF HISTORICAL BUILDINGS/FEATURES ARE APPROXIMATE.

AOC 7A	
MEDIA	# OF SAMPLES
WATER	2 (2 GROUND WATER)
SOIL	18 (7 SURFACE SOIL) (7 SUBSURFACE SOIL) (4 RANDOM SURFACE SOIL—LOCATIONS NOT SHOWN)



ENGR'G B.W.	DATE		<b>BAY WEST Inc.</b> ENVIRONMENTAL SERVICES ST. PAUL, MN
DRAWN K.M.	2/10/07		
REV.	5/2/07		
PROJECT NAME		GOPHER ORDNANCE	
TITLE		AOC 7A—NORTHWEST QUADRANT PROPOSED SAMPLING LOCATIONS	
DWG. NO.	060361-B1	SCALE	1"=100'
		FIGURE # 9A	



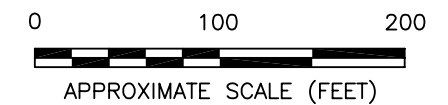



**KEY:**

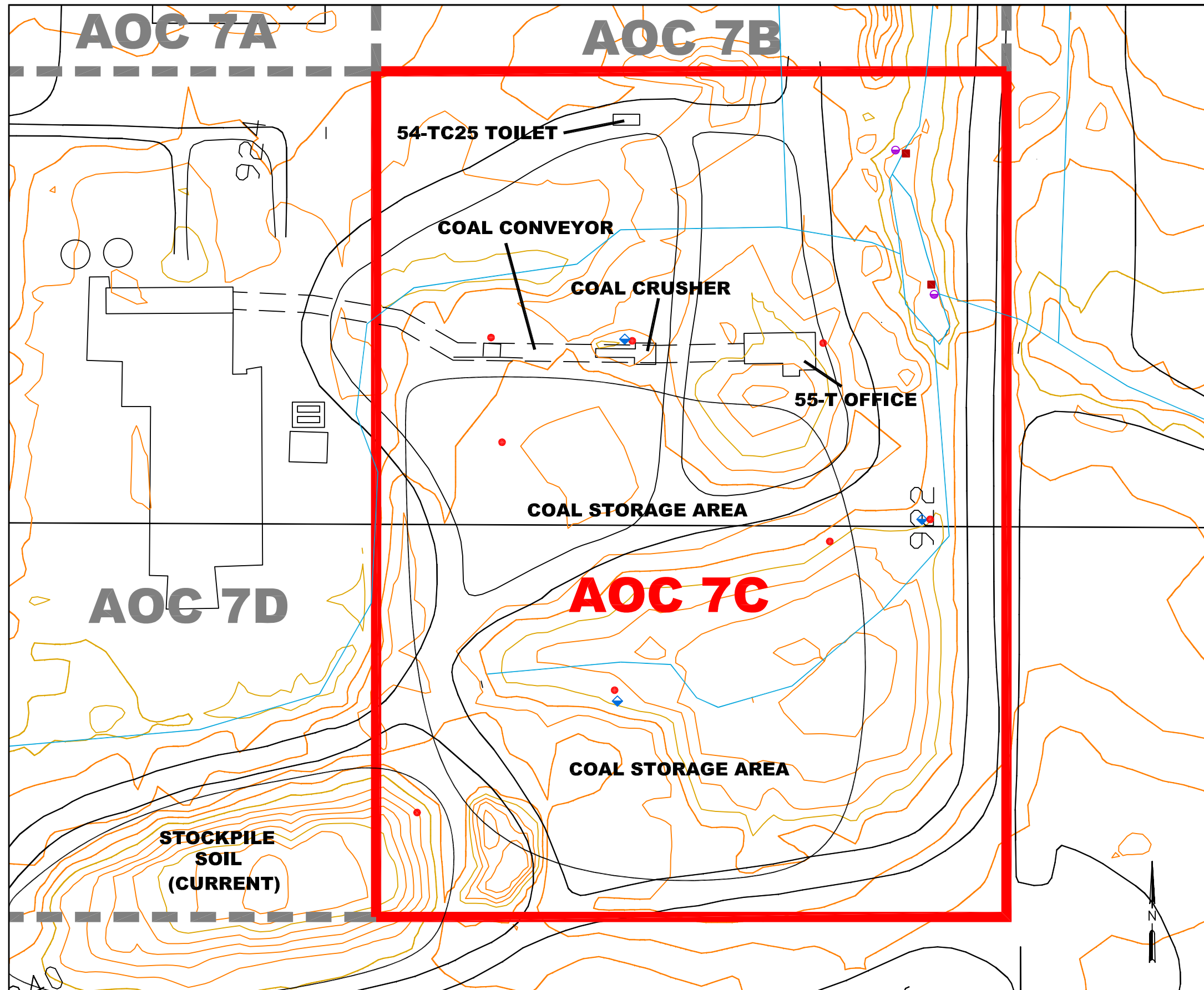
- AOC
- INDEX CONTOUR
- INTERVAL CONTOUR
- DITCH/DRAINAGEWAY
- SURFACE SOIL SAMPLE LOCATION
- ▲ SUBSURFACE SOIL SAMPLE LOCATION
- SURFACE AND ONE SUBSURFACE SOIL SAMPLE LOCATION
- SURFACE AND TWO SUBSURFACE SOIL SAMPLE LOCATION
- SEDIMENT SAMPLE LOCATION
- ◆ GROUND WATER SAMPLE LOCATION
- SURFACE WATER SAMPLE LOCATION

NOTE:  
LOCATIONS OF HISTORICAL BUILDINGS/FEATURES  
ARE APPROXIMATE.

AOC 7B	
MEDIA	# OF SAMPLES
WATER	2 (2 GROUND WATER)
SOIL	7 (3 SURFACE SOIL) (4 SUBSURFACE SOIL)



ENGR'G B.W.	DATE		<b>BAY WEST Inc.</b> ENVIRONMENTAL SERVICES ST. PAUL, MN
DRAWN K.M.	2/10/07		
REV.	5/2/07		
PROJECT NAME GOPHER ORDNANCE			
TITLE AOC 7B-NORTHEAST QUADRANT PROPOSED SAMPLING LOCATIONS			
DWG. NO.	060361-B1	SCALE 1"=100'	FIGURE # 9B



**KEY:**

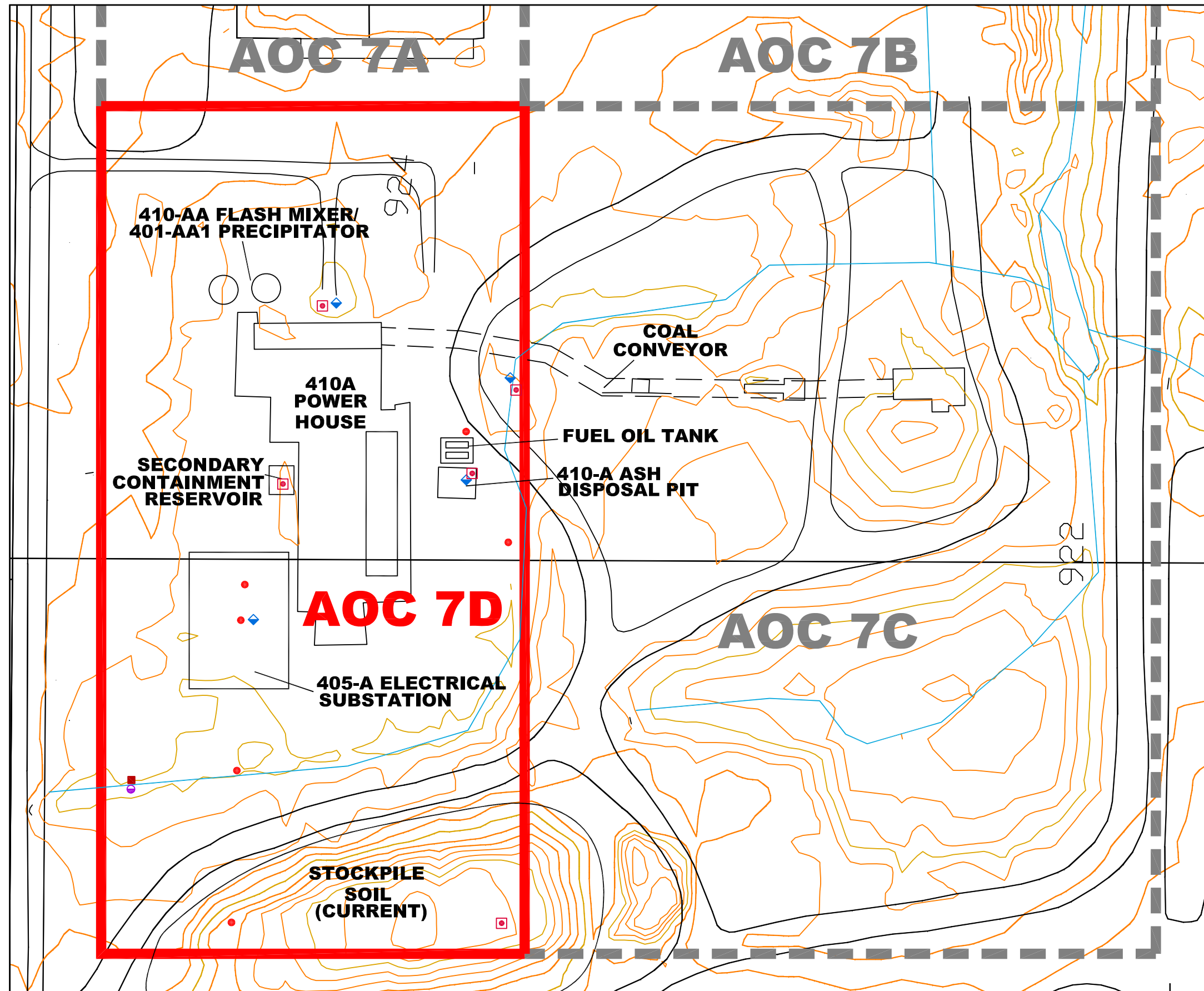
- AOC
- INDEX CONTOUR
- INTERVAL CONTOUR
- DITCH/DRAINAGEWAY
- SURFACE SOIL SAMPLE LOCATION
- ▲ SUBSURFACE SOIL SAMPLE LOCATION
- SURFACE AND ONE SUBSURFACE SOIL SAMPLE LOCATION
- SURFACE AND TWO SUBSURFACE SOIL SAMPLE LOCATION
- SEDIMENT SAMPLE LOCATION
- ◆ GROUND WATER SAMPLE LOCATION
- SURFACE WATER SAMPLE LOCATION

NOTE:  
LOCATIONS OF HISTORICAL BUILDINGS/FEATURES ARE APPROXIMATE.

AOC 7C	
MEDIA	# OF SAMPLES
WATER	6 (4 GROUND WATER) (2 SURFACE WATER)
SOIL	26 (8 SURFACE SOIL) (8 SUBSURFACE SOIL) (2 SEDIMENT) (8 RANDOM SURFACE SOIL— LOCATIONS NOT SHOWN)

APPROXIMATE SCALE (FEET)

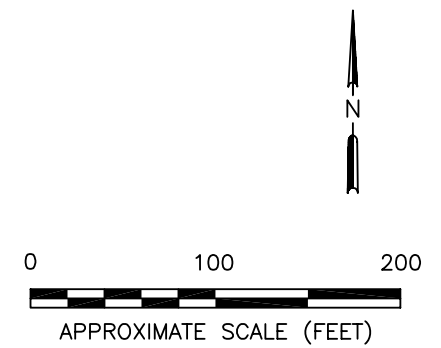
ENGR'G B.W.	DATE		<b>BAY WEST Inc.</b> ENVIRONMENTAL SERVICES ST. PAUL, MN
DRAWN K.M.	2/10/07		
REV.	5/2/07		
PROJECT NAME GOPHER ORDNANCE			
TITLE AOC 7C—SOUTHEAST QUADRANT PROPOSED SAMPLING LOCATIONS			
DWG. NO. 060361-B1	SCALE 1"=100'	FIGURE # 9C	




- KEY:**
- AOC
  - INDEX CONTOUR
  - INTERVAL CONTOUR
  - DITCH/DRAINAGEWAY
  - SURFACE SOIL SAMPLE LOCATION
  - ▲ SUBSURFACE SOIL SAMPLE LOCATION
  - SURFACE AND ONE SUBSURFACE SOIL SAMPLE LOCATION
  - SURFACE AND TWO SUBSURFACE SOIL SAMPLE LOCATION
  - SEDIMENT SAMPLE LOCATION
  - ◆ GROUND WATER SAMPLE LOCATION
  - SURFACE WATER SAMPLE LOCATION

NOTE:  
LOCATIONS OF HISTORICAL BUILDINGS/FEATURES  
ARE APPROXIMATE.

AOC 7D	
MEDIA	# OF SAMPLES
WATER	5 (4 GROUND WATER) (1 SURFACE WATER)
SOIL	32 (11 SURFACE SOIL) (16 SUBSURFACE SOIL) (1 SEDIMENT) (4 RANDOM SURFACE SOIL- LOCATIONS NOT SHOWN)



ENGR'G B.W.	DATE		<b>BAY WEST Inc.</b> ENVIRONMENTAL SERVICES ST. PAUL, MN
DRAWN K.M.	2/10/07		
REV.	5/2/07		
PROJECT NAME GOPHER ORDNANCE			
TITLE AOC 7D-SOUTHWEST QUADRANT PROPOSED SAMPLING LOCATIONS			
DWG. NO.	060361-B1	SCALE 1"=100'	FIGURE # 9D