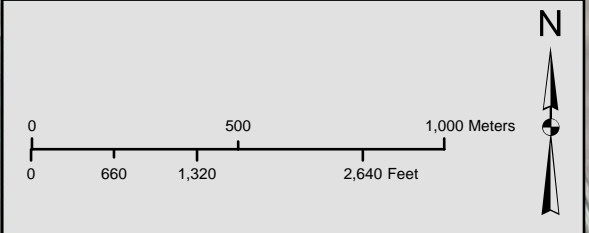


Legend

Test Hole Locations

- Phase I Auger Test Hole
- Phase II Auger Test Hole
- Phase II Rotasonic Test Hole
- Township Line
- Section Line
- - - Quarter Section Line
- - - "Forty" Line
- ▨ Area mapped by MGS as having little potential*
- - - Area Not Evaluated
- ▭ Umore Park Property Line (approximate)

Aerial Photograph from USDA-FSA-APFO, flown July 18, 2003.
 Public land survey and lakes data from Minnesota DNR. Section numbers are shown in red.
 Roads from Minnesota DOT.
 Property line is approximate. Property size as shown is 4,828.64 acres.
 *Southwick, D.L., Jouseau, M., Meyer, G.N., Mossler, J.H. and Wahl, T.E., 2000.
 Aggregate resources inventory of the seven-county metropolitan area, Minnesota:
 Minnesota Geological Survey Information Circular 46, 91 p



ProSource
TECHNOLOGIES, INC.
 • Engineering
 • Land Surveying
 • Environmental
 • Right of Way
 9219 East River Road N.W.
 Coon Rapids, MN 55433
 Phone: (763) 786-1445
 Fax: (763) 786-1030
 www.prosourcetech.com

I hereby certify that this plan, document, or report was prepared by me or under my direct supervision and that I am a duly Licensed Professional Geologist under the laws of the state of Minnesota.
 J.D. Lehr, PG
 License # 30063
 May 30, 2008

Drawn: JDL
 Designed: JDL
 Date: 5/30/08

PLATE 1
TEST HOLES DRILLED SEPTEMBER 17, 2007 TO APRIL 23, 2008

Prepared for: THE REGENTS OF THE UNIVERSITY OF MINNESOTA
 Minneapolis, Minnesota

UMORE PARK GEOLOGICAL ASSESSMENT
 City of Rosemount & Empire Township, Minnesota
 ProSource Project No.: 1819-00

FIGURE 3

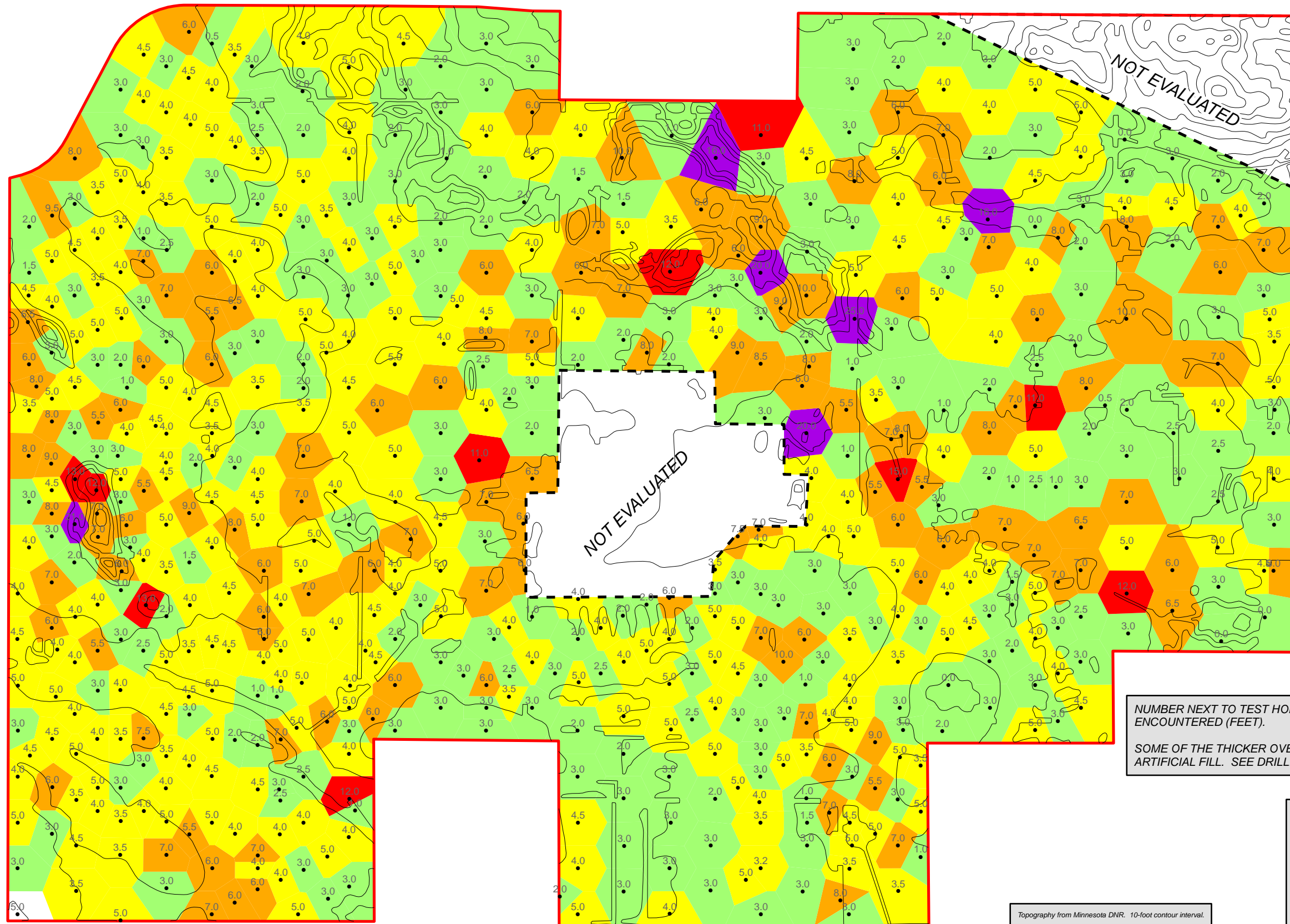
GRAIN-SIZE CLASSIFICATION SYSTEM

Geologic Name	Wentworth (1922) Size Class	Sieve Size	mm	In.	Industry Name	ASTM C33 Sieve	Examples of Aggregate Products	
GRAVEL	Boulder	NA	4096	161	↑ Coarse Aggregate ↓ Fine Aggregate ↓ Waste	4" 3-1/2" 3" 2-1/2" 2" 1-1/2" 1" 3/4" 1/2" 3/8" 4" 8" 16" 30" 50" 100" 200"	R I P P # 2 # 4 # 6 # 7 # 8 # 9 C O N C R E T E S A N D M A S O N S A N D C L A S S 5	
		NA	1024	40				
	Cobble	4"	100	4.0				
		3-1/2"	90	3.5				
		3"	75	3.0				
		2-1/2"	64	2.5				
		2"	50	2.00				
		1-3/4"	45	1.75				
		1-1/2"	38.1	1.50				
		1-1/4"	31.5	1.25				
		1"	25.0	1.00				
		Pebble	7/8"	22.4				0.875
			3/4"	19.0				0.750
			5/8"	16.0				0.625
			1/2"	12.5				0.500
7/16"	11.2		0.438					
3/8"	9.50		0.375					
5/16"	8.00		0.312					
1/4"	6.30		0.250					
4	4.75		0.187					
5	4.00		0.157					
"GRIT" or "PEA GRAVEL"	Granule	6	3.36	0.132				
		7	2.83	0.111				
		8	2.38	0.0937				
		10	2.00	0.0787				
		12	1.68	0.0661				
		14	1.41	0.0555				
		16	1.19	0.0469				
		18	1.00	0.0394				
		20	0.84	0.0331				
		25	0.71	0.0278				
SAND	Very Coarse Sand	30	0.59	0.0234				
		35	0.50	0.0197				
		40	0.42	0.0165				
	Coarse Sand	45	0.35	0.0139				
		50	0.30	0.0117				
		60	0.25	0.0098				
	Medium Sand	70	0.210	0.0083				
		80	0.177	0.0070				
		100	0.149	0.0059				
	Fine Sand	120	0.125	0.0049				
140		0.105	0.0041					
170		0.088	0.0035					
Very Fine sand	200	0.074	0.0029					
	230	0.0625	0.0025					
MUD	Silt	NA	0.0039	0.00125	↓ Waste			
	Clay	NA	<0.0039					

UMORE PARK GEOLOGICAL ASSESSMENT
City of Rosemount & Empire Township
ProSource Project No.: 1819-00

FIGURE 3
GRAIN SIZE
CLASSIFICATION TABLE





Legend

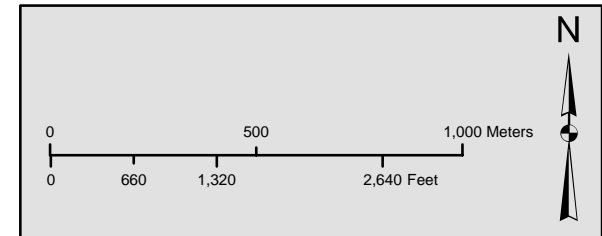
- Test Hole Locations
- Surface Topography
- - - Area Not Evaluated
- ▭ Umore Park Property Line (approximate)

Overburden Thickness (ft.)

- 0.0 - 3.0
- 3.1 - 5.0
- 5.1 - 10.0
- 10.1 - 15.0
- 15.1 - 25.0

NUMBER NEXT TO TEST HOLE INDICATES THICKNESS OF OVERBURDEN ENCOUNTERED (FEET).

SOME OF THE THICKER OVERBURDEN ENCOUNTERED WAS IN AREAS CONTAINING ARTIFICIAL FILL. SEE DRILLING LOGS FOR DETAIL.



Topography from Minnesota DNR. 10-foot contour interval.

ProSource
TECHNOLOGIES, INC.

• Engineering
• Land Surveying
• Environmental
• Right of Way

9219 East River Road N.W.
Coon Rapids, MN 55433
Phone: (763) 786-1445
Fax: (763) 786-1030
www.prosourcetech.com

I hereby certify that this plan, document, or report was prepared by me or under my direct supervision and that I am a duly Licensed Professional Geologist under the laws of the state of Minnesota.

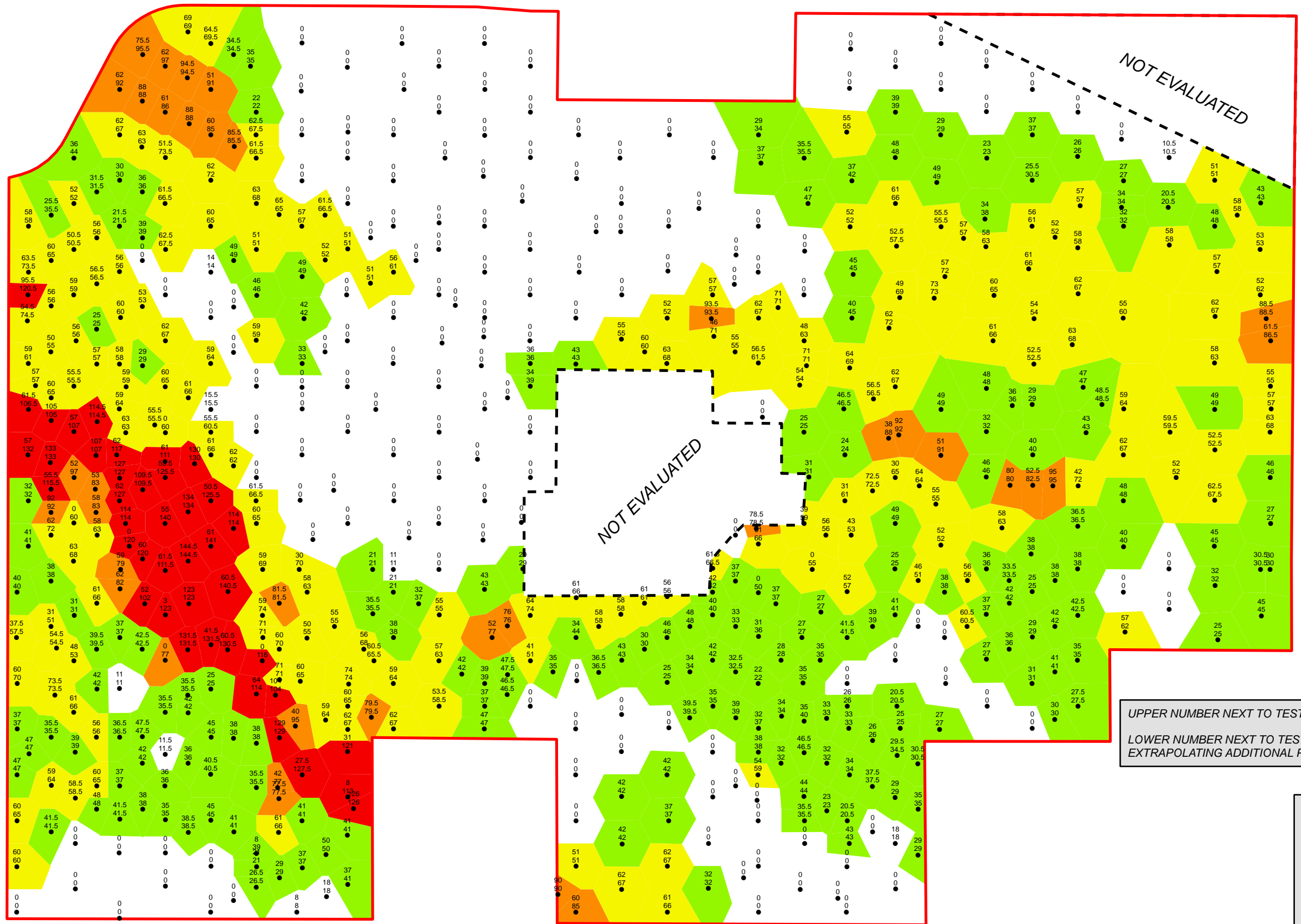
J.D. Lehr, PG
J.D. Lehr
License # 30063
May 30, 2008

Drawn: JDL
Designed: JDL
Date: 5/30/08

PLATE 2
OVERBURDEN THICKNESS

Prepared for: THE REGENTS OF THE UNIVERSITY OF MINNESOTA
Minneapolis, Minnesota

UMORE PARK GEOLOGICAL ASSESSMENT
City of Rosemount & Empire Township, Minnesota
ProSource Project No.: 1819-00



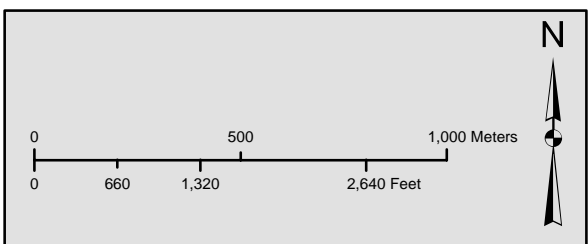
Legend

- Test Hole Locations
- - - Area Not Evaluated
- ▭ Umore Park Property Line (approximate)

Total Economic Sand & Gravel Thickness (ft.)

- 0.0 - 20.0
- 20.1 - 50.0
- 50.1 - 75.0
- 75.1 - 100.0
- 100.1 - 144.5

UPPER NUMBER NEXT TO TEST HOLE INDICATES PROVEN DEPOSIT THICKNESS.
 LOWER NUMBER NEXT TO TEST HOLE INDICATES TOTAL DEPOSIT THICKNESS AFTER
 EXTRAPOLATING ADDITIONAL PROBABLE DEPOSIT THICKNESS WHERE JUSTIFIED.



ProSource
 TECHNOLOGIES, INC.
 • Engineering
 • Land Surveying
 • Environmental
 • Right of Way
 9219 East River Road N.W.
 Coon Rapids, MN 55433
 Phone: (763) 786-1445
 Fax: (763) 786-1030
 www.prosourcetech.com

I hereby certify that this plan, document, or report was prepared by me or under my direct supervision and that I am a duly Licensed Professional Geologist under the laws of the state of Minnesota.

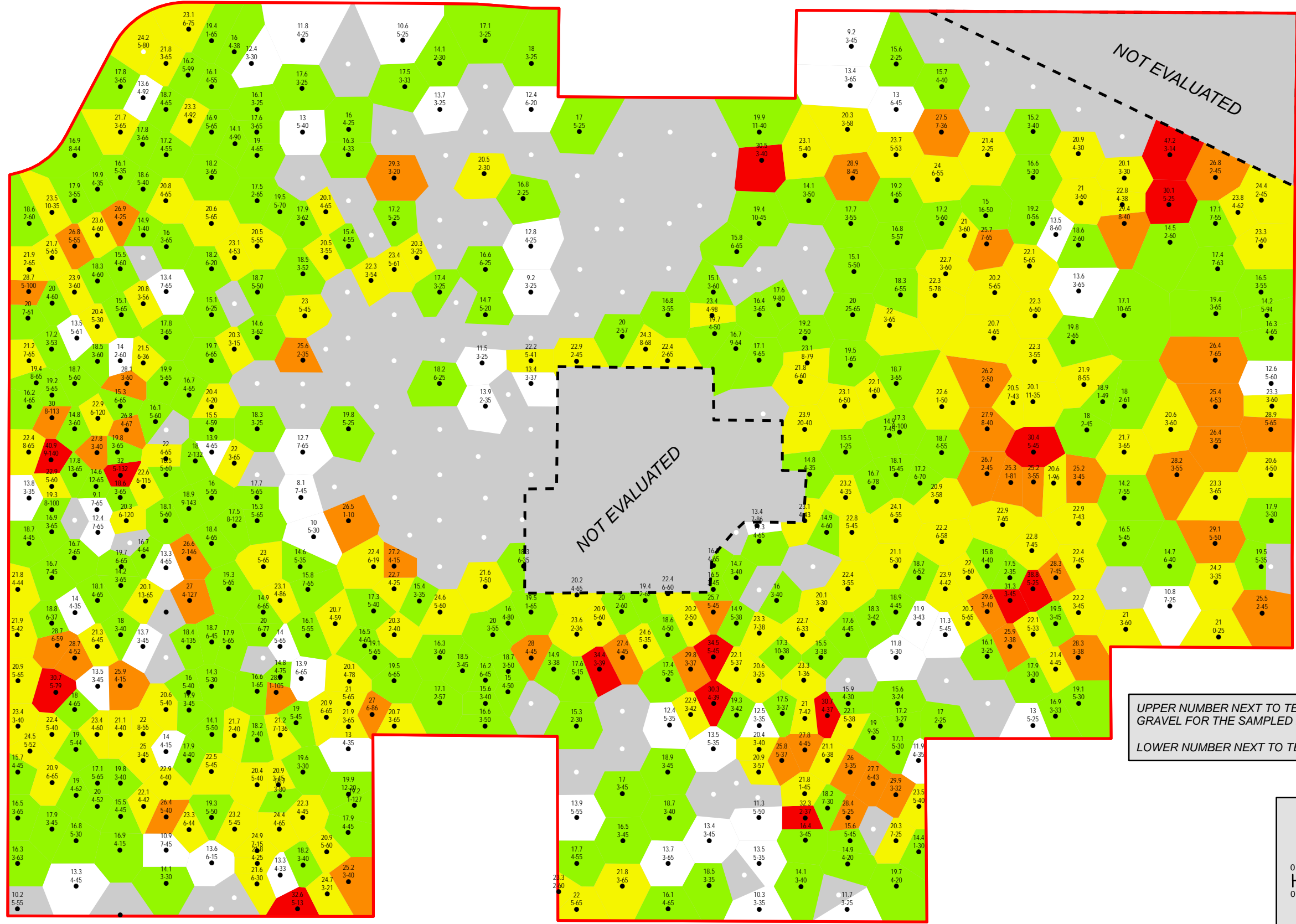
J.D. Lehr, PG
J.D. Lehr
 License # 30063
 May 30, 2008

Drawn: JDL
 Designed: JDL
 Date: 5/30/08

PLATE 3
 TOTAL THICKNESS OF ECONOMIC SAND & GRAVEL

Prepared for: THE REGENTS OF THE UNIVERSITY OF MINNESOTA
 Minneapolis, Minnesota

UMORE PARK GEOLOGICAL ASSESSMENT
 City of Rosemount & Empire Township, Minnesota
 ProSource Project No.: 1819-00



Legend

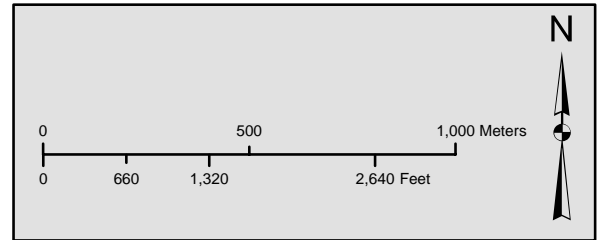
Test Hole Locations

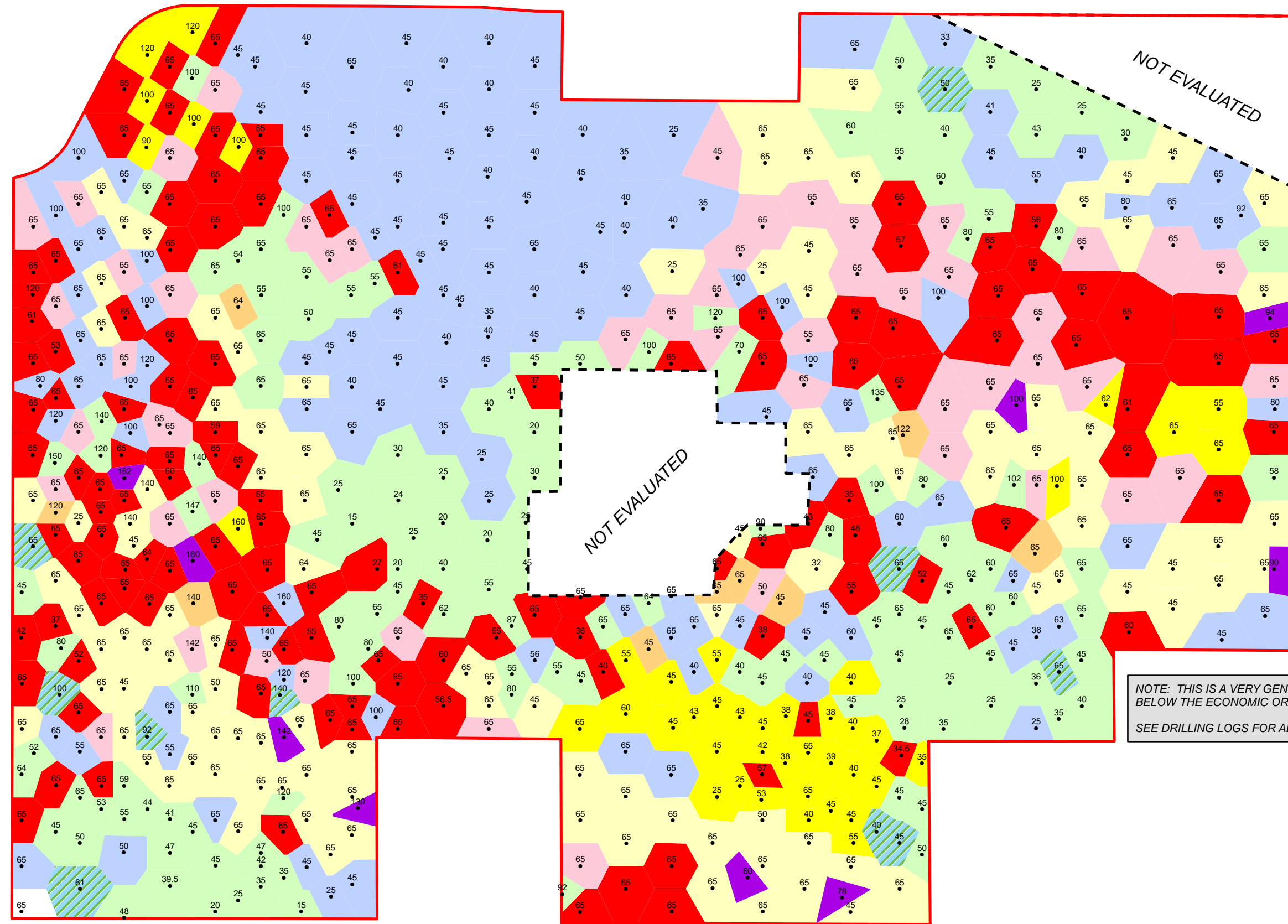
- Samples Collected
- No Samples Collected
- - - Area Not Evaluated
- ▭ Umore Park Property Line (approximate)

Percent Gravel

- 8.1 - 14.0
- 14.1 - 20.0
- 20.1 - 25.0
- 25.1 - 30.0
- 30.1 - 47.2

UPPER NUMBER NEXT TO TEST HOLE INDICATES WEIGHTED AVERAGE PERCENT GRAVEL FOR THE SAMPLED INTERVAL
 LOWER NUMBER NEXT TO TEST HOLE INDICATES THE SAMPLED INTERVAL (FT.)





NOT EVALUATED

NOT EVALUATED

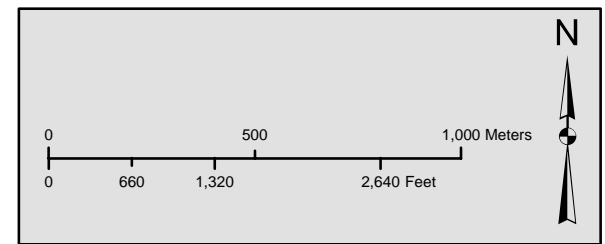
Legend

- Test Hole Location. Labels show total depth drilled (ft.)
- - - Area Not Evaluated
- ▭ UMore Park Property Line (approximate)

Material at Bottom of Deposit

- Economic Sand & Gravel
- Sub Economic + (Generally thinner with some gravel)
- Sub Economic - (Generally thicker with little gravel)
- Older Outwash
- Lacustrine Sediment
- Lacustrine Sediment Overlying Glacial Till
- Glacial Till
- St. Peter Sandstone
- Prairie du Chein Group

NOTE: THIS IS A VERY GENERAL SUMMARY OF THE TYPE MATERIAL OCCURRING BELOW THE ECONOMIC OR SUBECONOMIC SAND AND GRAVEL INTERVALS DRILLED. SEE DRILLING LOGS FOR ADDITIONAL DETAIL.



ProSource
TECHNOLOGIES, INC.
• Engineering
• Land Surveying
• Environmental
• Right of Way
9219 East River Road N.W.
Coon Rapids, MN 55433
Phone: (763) 786-1445
Fax: (763) 786-1030
www.prosourcetech.com

I hereby certify that this plan, document, or report was prepared by me or under my direct supervision and that I am a duly Licensed Professional Geologist under the laws of the state of Minnesota.

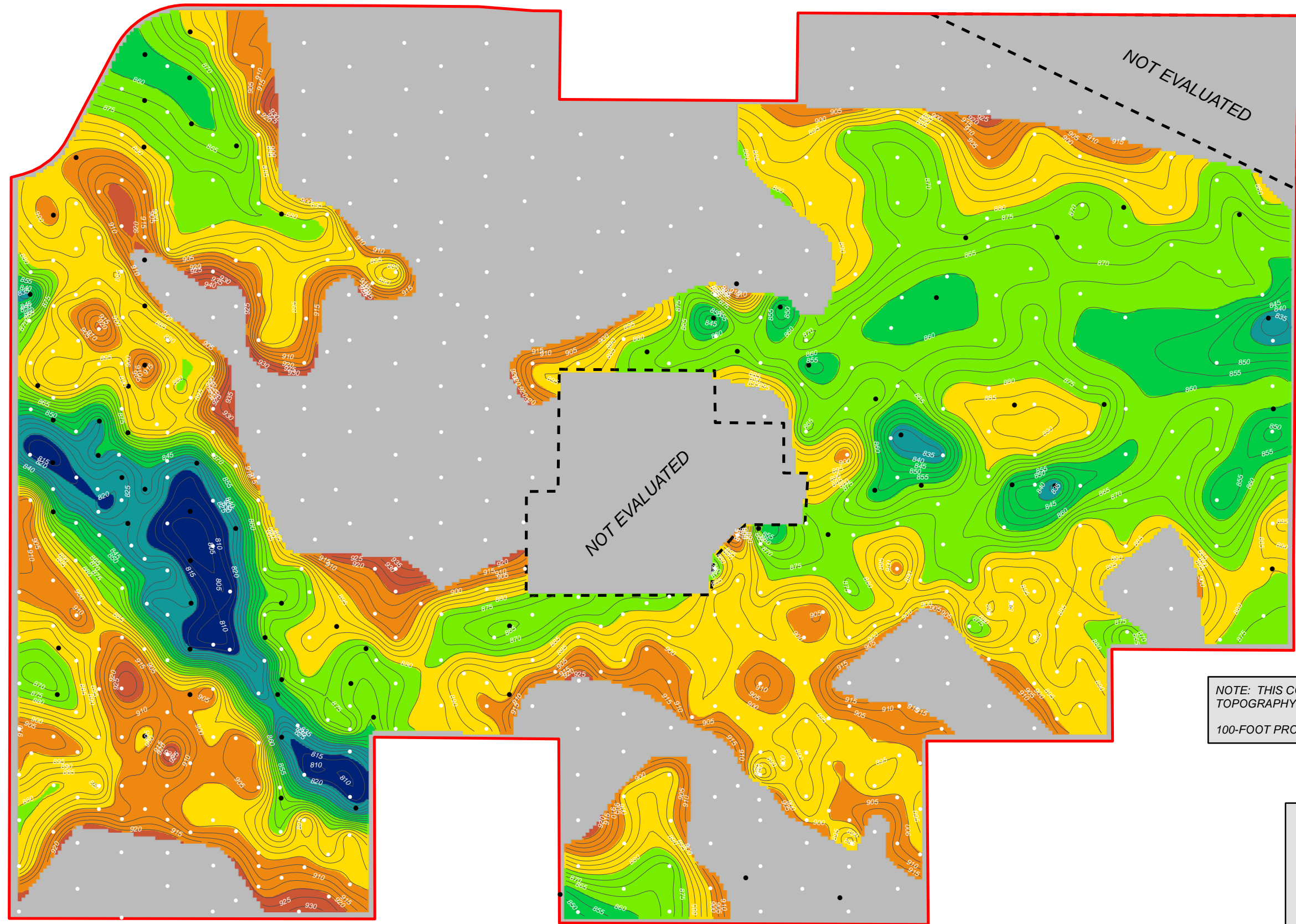
J.D. Lehr, PG
J.D. Lehr
License # 30063
May 30, 2008

Drawn: JDL
Designed: JDL
Date: 5/30/08

PLATE 5
MATERIAL AT BOTTOM OF DEPOSIT

Prepared for: THE REGENTS OF THE UNIVERSITY OF MINNESOTA
Minneapolis, Minnesota

UMORE PARK GEOLOGICAL ASSESSMENT
City of Rosemount & Empire Township, Minnesota
ProSource Project No.: 1819-00



Legend

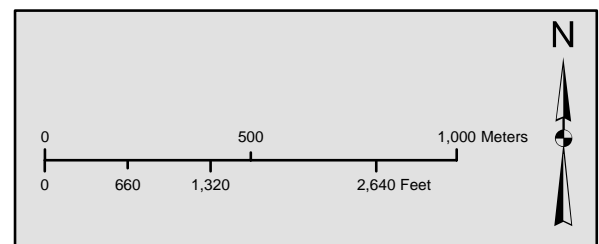
Test Hole Locations

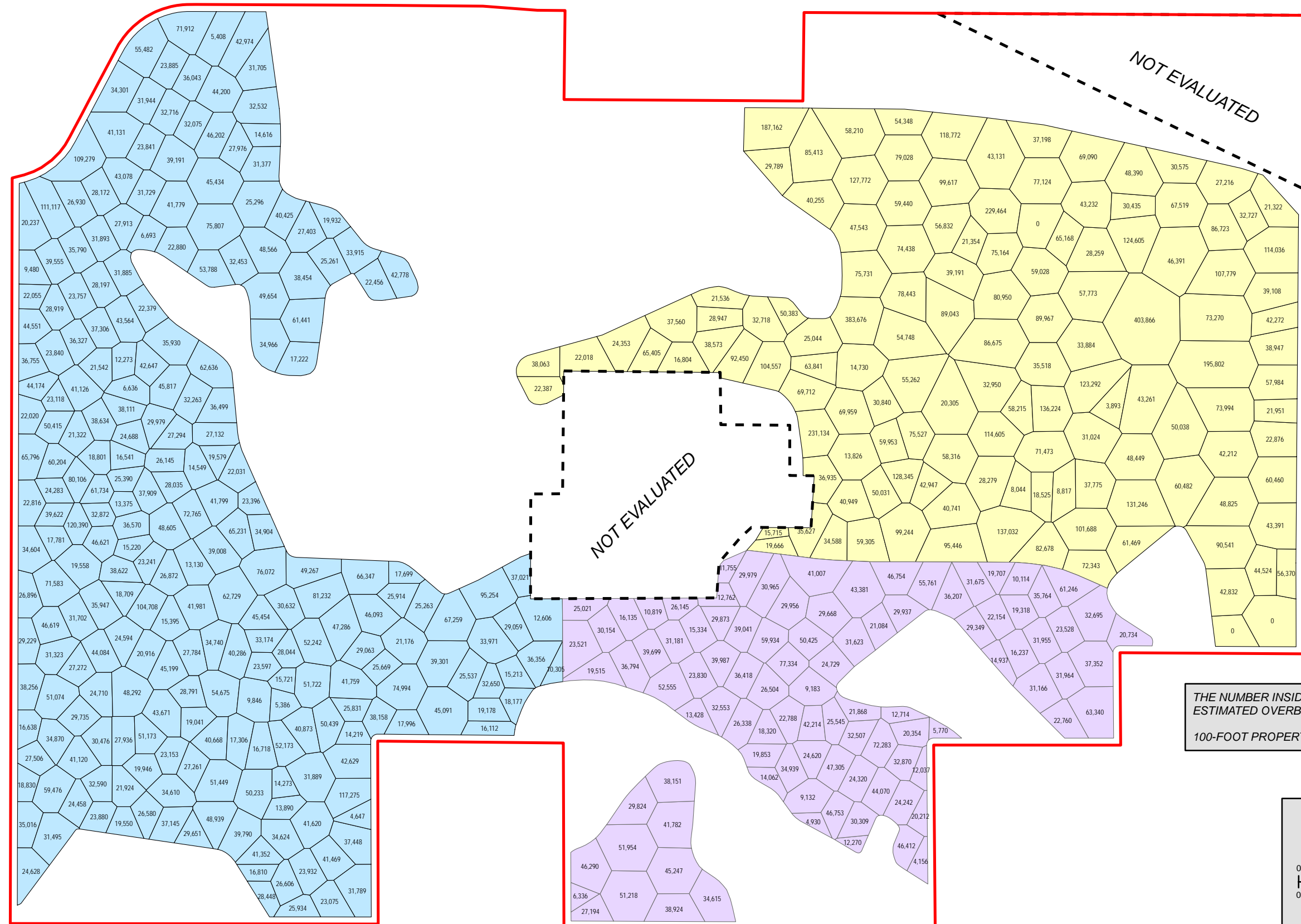
- Flight Auger
- Rotasonic
- Contour of Bottom of Deposit (contour interval 5 feet)
- - - Area Not Evaluated
- ▭ UMore Park Property Line (approximate)

Elevation of Bottom of Deposit (ft.)

- 921 - 940
- 901 - 920
- 881 - 900
- 861 - 880
- 841 - 860
- 821 - 840
- 805 - 820

NOTE: THIS CONTOURING METHOD DOES NOT CONSIDER EXISTING TOPOGRAPHY ALONG PERIMETER OF DEPOSIT.
100-FOOT PROPERTY LINE SETBACK SHOWN





OVERBURDEN VOLUME SUMMARY	
	(cubic yards)
Western Valley Complex	8,772,000
Eastern Fan Complex	8,655,000
Southern Shallow Complex	2,962,000
TOTAL	20,389,000

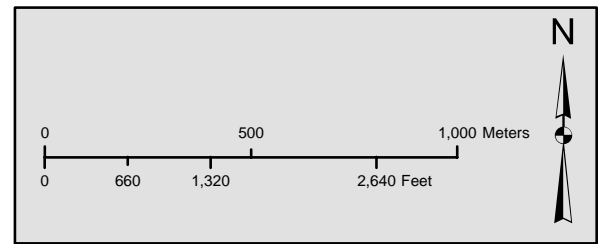
Legend

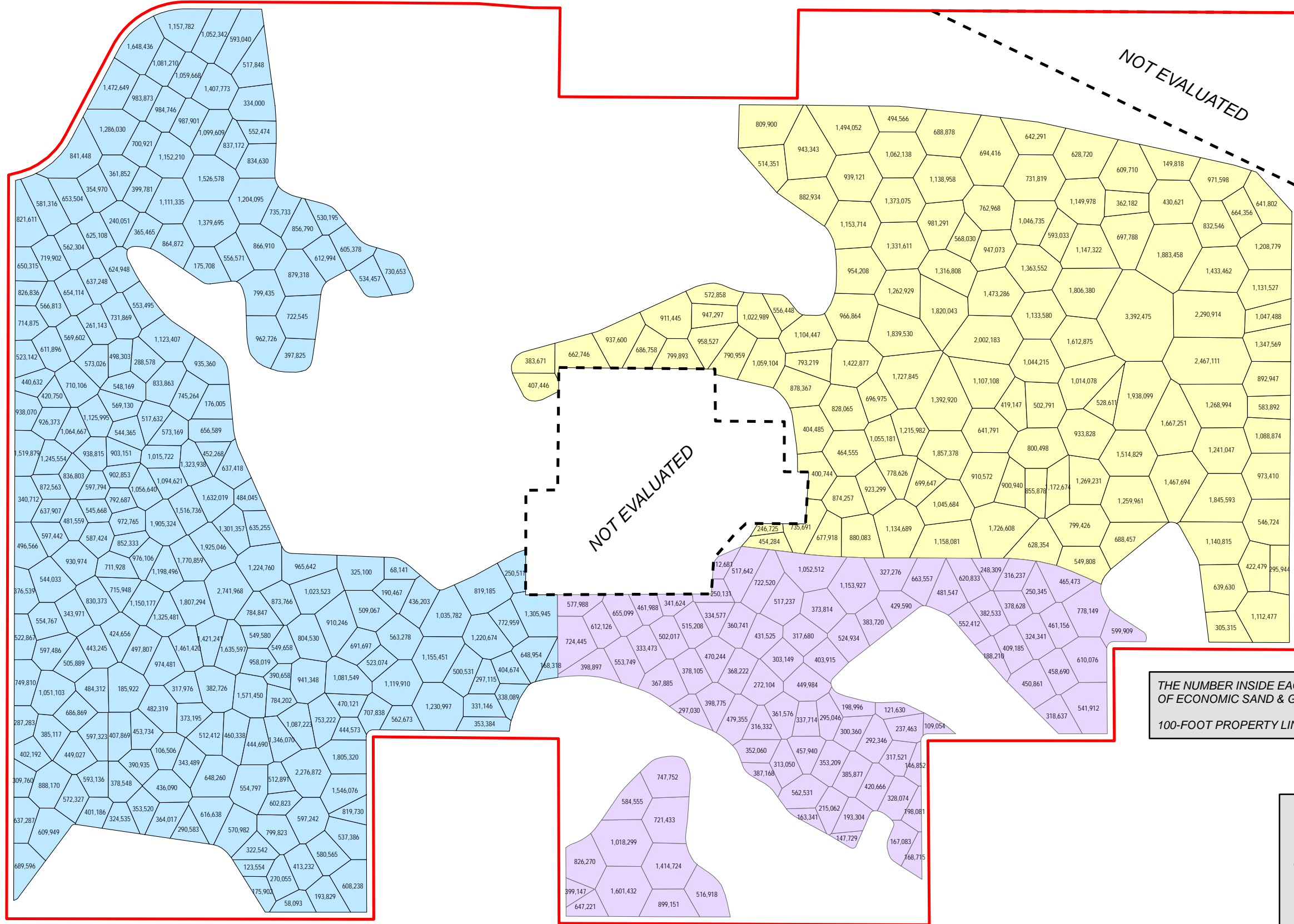
- Area Not Evaluated
- Umore Park Property Line (approximate)

Deposit Areas

- Western Valley Complex
- Eastern Fan Complex
- Southern Shallow Complex

THE NUMBER INSIDE EACH POLYGON REPRESENTS THE ESTIMATED OVERBURDEN VOLUME FOR THAT POLYGON (CUBIC YARDS)
100-FOOT PROPERTY LINE SETBACK SHOWN





SAND & GRAVEL VOLUME SUMMARY	
	(short tons)
Western Valley Complex	183,600,000
Eastern Fan Complex	133,100,000
Southern Shallow Complex	44,600,000
TOTAL	361,300,000

Assumed 1.4 tons per cubic yard

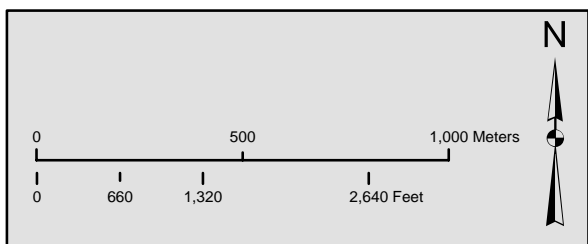
Legend

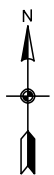
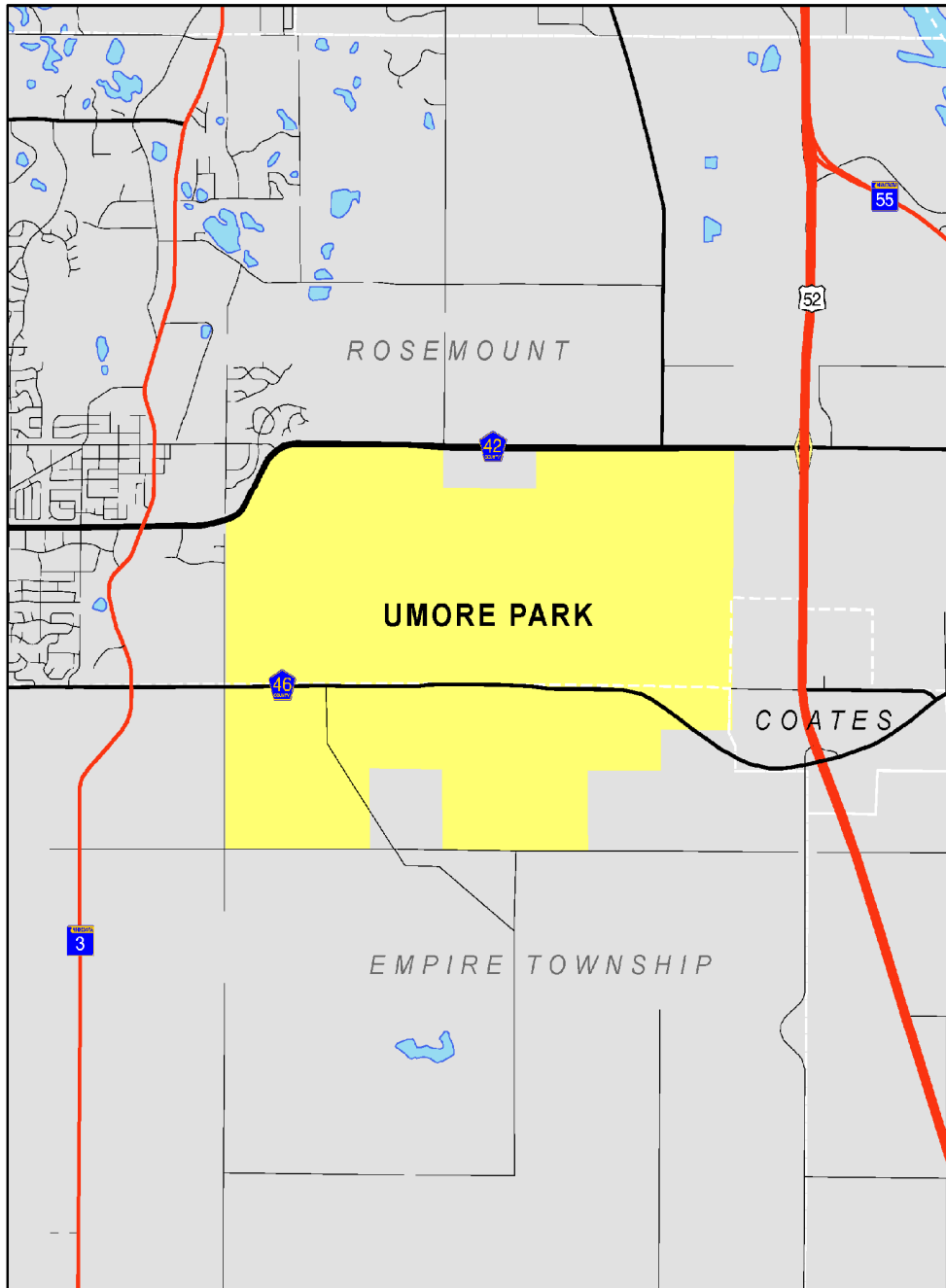
- Area Not Evaluated
- Umore Park Property Line (approximate)

Deposit Areas

- Western Valley Complex
- Eastern Fan Complex
- Southern Shallow Complex

THE NUMBER INSIDE EACH POLYGON REPRESENTS THE ESTIMATED VOLUME OF ECONOMIC SAND & GRAVEL FOR THAT POLYGON (SHORT TONS)
 100-FOOT PROPERTY LINE SETBACK SHOWN

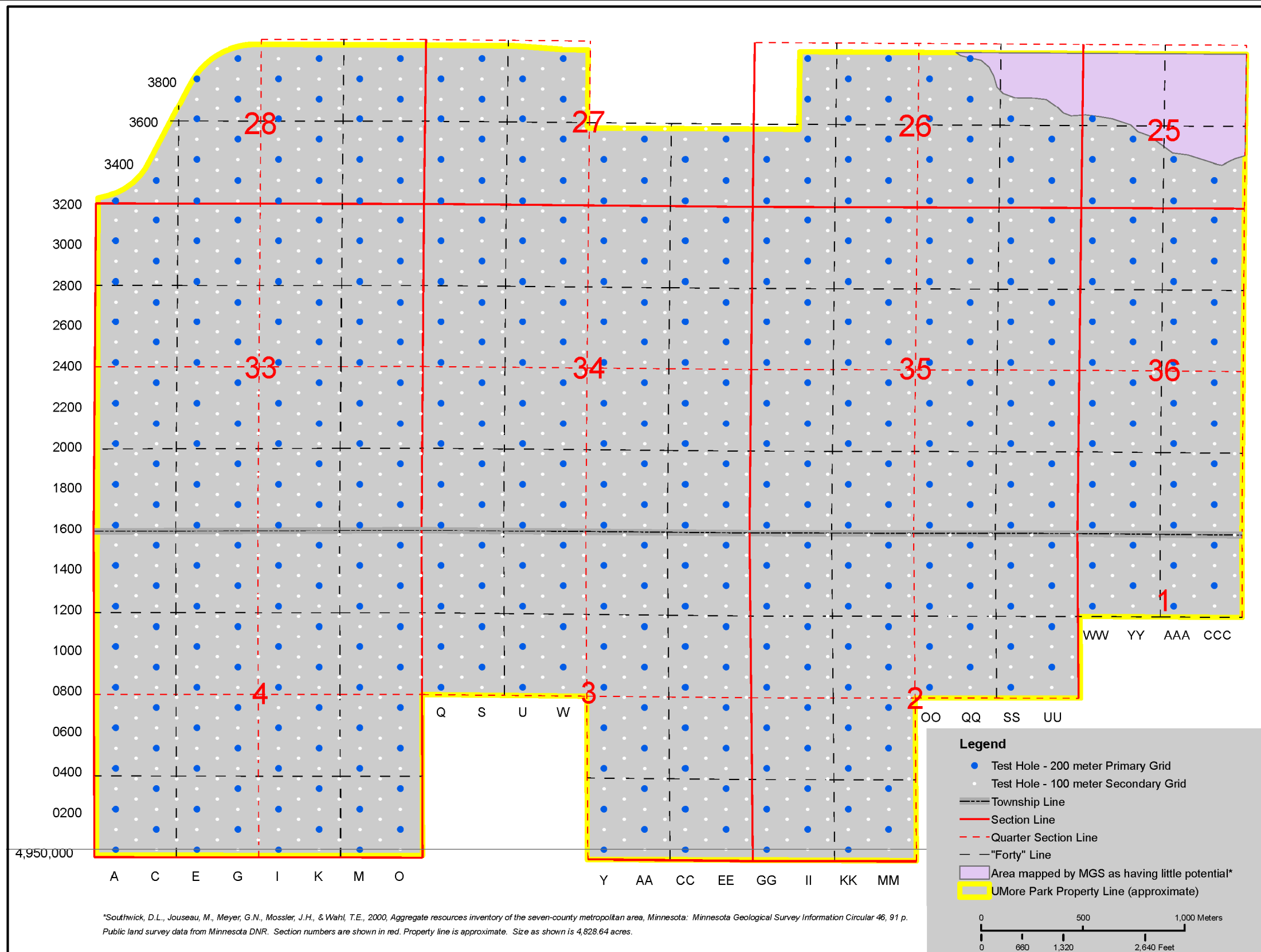




UMORE PARK GEOLOGICAL ASSESSMENT
 City of Rosemount & Empire Township
 ProSource Project No.: 1819-00

FIGURE 1
 SITE LOCATION MAP

ProSource
 TECHNOLOGIES, INC.



UMORE PARK GEOLOGICAL ASSESSMENT
 City of Rosemount & Empire Township
 ProSource Project No.: 1819-00

FIGURE 2
 TEST HOLE GRID AND
 NUMBERING SYSTEM

