

Appendix A

Excerpts from Peer Phase I Environmental Site Assessment (2006)

- ♦ University of Minnesota or Agricultural Experiment Station, 1605 160th Street West, EDR Map ID# 19, identified on the UST, LUST, the bulk pesticides/fertilizers facility (MN BULK), and the agricultural chemical spills (MN AGSPILLS) databases.

According to a supplemental EDR Site report, the following four USTs are registered to the Agricultural Experiment Station:

1. A 500-gallon gasoline UST installed on January 1, 1949 and removed on October 25, 1991.
2. A 500-gallon gasoline UST installed on January 1, 1950 and removed on October 25, 1991.
3. A 1,000-gallon gasoline UST installed on January 1, 1952 and removed on October 25, 1991.
4. A 3,600-gallon diesel UST installed on May 10, 1975 and removed on July 20, 1994.

The EDR report lists four “closed” petroleum release sites on this portion of the subject property (i.e. 1605 160th Street); the EDR report does not specify which former tank was associated with each release. An underground storage tank release (gasoline) was reported on May 14, 1990 (LEAK# 2529). The file regarding this release was closed by the MPCA on October 4, 1994. According to the EDR report, ground water was reportedly impacted by the release and contaminated soils remain at the property. This release is discussed further in Section 7.2.11.

A second release (gasoline) was reported on October 25, 1991 (LEAK# 4758). The file regarding this release was closed by the MPCA on January 21, 1993. According to the EDR report, ground water was reportedly not impacted by the release and no contaminated soils remain at the property.

A third release (gasoline) was reported on October 26, 1991 (LEAK# 4759). The file regarding this release was closed by the MPCA on January 21, 1993. According to the EDR report, ground water was reportedly not impacted by the release and no contaminated soils remain at the property.

A fourth release (diesel) was reported on June 21, 1994 (LEAK# 7504). The file regarding this release was closed by the MPCA on September 13, 1995. According to the EDR report, contaminated soils remain at the property.

The MN BULK database is a list of facilities that use bulk pesticides and fertilizers. According to the EDR report, the University of Minnesota has a bulk pesticide/fertilizer storage permit (License# 20058982).

The release date and the material(s) released were not identified for the MN AGSPILLS listing. The release was closed by the Minnesota Department of Agriculture (MDA) on September 25, 1992.

- ♦ Ag Research Center, 2375 160th Street West, EDR Map ID# 20, identified on the LAST database.

An aboveground storage tank release (fuel oil #1 and #2) was reported on January 19, 1994 (LEAK# 7154). The MPCA closed the file on this release on September 26, 1994. According to the EDR report, ground water was reportedly not contaminated by the release; however, contaminated soil remains at the property.

- ♦ Rosemount Compost Facility, 16200 Barbara Avenue, EDR Map ID# 26, identified on the AST database.

One 1,000-gallon diesel AST is registered to this facility. According to an EDR Site Report, the tank was installed in 2002 on a concrete base and is active. No releases have been reported in association with the use of the tank.

- ♦ Rosemount Research Center, 160th/Blaine, EDR Map ID# 23, identified on the MN SPILLS database.

A release of an estimated 55 gallons of used or waste oil was reported on July 2, 2004. The EDR report states that a plastic drum was discovered on the property. The only label on the drum was the drum manufacturer. The drum split open and released the contents, thus impacting the soil. The caller reportedly handled the clean-up and the disposal of the drum. The spill was closed by the MPCA on July 8, 2004. According to the EDR report, there is no file associated with this release.

- ♦ U of MN Rosemount Experimental Station, EDR Map ID# 13, identified on the MN AGSPILLS database.

Three releases are reported under this database listing. The investigation location description is listed as Buildings 313 and 315, Buildings 610, 612, and 621, and Buildings 706 and 709. The material(s) released is not identified. However, available information indicates the releases were pesticide rinsate from former USTs. All three releases were closed by the MDA on August 1, 2002. These releases are discussed further in Section 7.2.17.

According to the available information, the Oxidation Pond is a man-made system which serves as the collection point for sanitary sewage at RRC. The sanitary sewer system associated with the Oxidation Pond consists of several thousand feet of trunk line serving the RRC complex. The system is in use for sanitary sewer discharge only by a limited number of tenants. The pond system has been in existence since the late 1950s and has not been upgraded because of its limited use and accessibility. The pond is assumed to have been designed as an evaporation/infiltration lagoon since there is no discharge structure from the pond. The study determined that the pond needed to be permitted with the State.

A Notice of Violation (NOV) for the wastewater evaporation/infiltration lagoon was issued on May 26, 1987. The alleged violations include the lagoon was constructed and was being operated without MPCA review or approval. The University supplied the Agency with an incomplete permit application on April 23, 1987. The second alleged violation was that the system was constructed without any primary treatment of sanitary sewage or other wastes.

The site investigation identified ten industrial users, one residence and RRC shop facilities as dischargers to the sewer system. Based on the site investigation, it was determined the sources of waste discharges are domestic use, clear water flow from drinking water fountains, and domestic fixture leakage. Based on a December 16, 1987 RCRA Facility Assessment Site Visit Report, the MPCA concluded that “no evidence of PCB contamination has occurred at the site (i.e. Oxidation Pond) to warrant corrective action clean up”.

7.2.9 2001-2002 Ground Water Monitoring Results, UMRRC, Rosemount, MN, prepared by Delta, February 28, 2002.

Delta collected ground water samples from two monitoring wells located just east of Blaine Avenue and east of the former GOW “A”, “B” and “C” production lines and analyzed the samples for VOCs. Chloroform was detected in the ground water at concentrations of 11 and 18 micrograms per liter (ug/l), less than the MDH drinking water criteria of 60 ug/l.

7.2.10 Remedial Investigation, 2375 – 160th Street West, Rosemount, MN (MPCA Leaksite ID# 7154), prepared by STS, August 3, 1994.

The remedial investigation was conducted to determine the extent and magnitude of soil impacts associated with a fuel oil release at a rental home on the University’s Agricultural Experiment Station (located at the former dairy facility). The fuel oil leaked from an AST in the basement of the house into a floor drain and then into a septic system. Three soil borings were advanced and two soil samples were collected from each boring for analysis for benzene, toluene, ethyl benzene, and xylenes (BTEX)

and DRO. No BTEX compounds were identified above method detection limits. DRO was detected in one soil sample. The release appeared to be limited to the soils adjacent to the pumping chamber and distribution box of the septic system. STS recommended the MPCA be requested to close the release. As discussed in Section 4.3.2, the MPCA issued closure on September 26, 1994.

7.2.11 Soil Exploration/Remedial Investigation at Rosemount Agricultural Experiment Station, Petroleum Release Site (MPCA Leaksite No. 2529), prepared by STS, May 31, 1991.

The soil exploration was conducted to determine the extent and magnitude of impacts associated with a petroleum release at the Service Station complex on the University's Agricultural Experiment Station. Soil samples were collected for analysis for BTEX and total petroleum hydrocarbons (TPH) as gasoline and total lead. BTEX and TPH compounds were detected in one soil sample. Remediation of the release was recommended. As discussed in Section 4.3.2, the MPCA issued closure on October 4, 1994.

7.2.12 Excavation Report for Petroleum Release Site, UMRRC, 15325 Babcock Avenue, Building 717A, Rosemount, MN, MPCA Leak No.: 4928, prepared by Nova Environmental Services, Inc., February 18, 1992.

A 1,000-gallon UST was removed on December 23, 1991. Approximately eight cubic yards of petroleum-impacted soil was excavated and stockpiled on-site. Based on field measurements and laboratory analysis, the impacted soil was limited to the sandy clay fill material from below the UST to a depth of approximately nine feet. No petroleum impacts were detected in the native soil at a depth of 10 feet. No additional investigation was recommended. As discussed in Section 4.3.2, the MPCA issued closure on May 26, 1992.

7.2.13 Limited Site Investigation Report, Building 719 Blaine, UMRRC, Rosemount, MN, prepared by Meisch & Associates, Ltd., October 26, 2000.

A 3,000-gallon fuel oil AST was removed on April 26, 2000. During removal hydrocarbon impacts to soil were observed on the ground surface beneath the tank valve location and the piping inlet into the building. Three soil borings were advanced a soil sample was collected from each boring for analysis for DRO, GRO, and BTEX. No detectable concentrations were identified. Meisch & Associates recommended the MPCA be requested to close the release (MPCA Leaksite No.: 13435). The MPCA issued closure on December 20, 2000.

The following is a general description of wastes stored within Building E.

- ◆ Waste reactive materials.
- ◆ Waste shock-sensitive materials.

The following is a general description of wastes stored within Building F.

- ◆ Waste flammable liquids.
- ◆ Waste corrosive (alkaline) materials.
- ◆ Waste toxic materials.
- ◆ Waste corrosive (acidic – organic acids) materials.

Peer assisted the University in completing closure of Buildings A through E of the RRC hazardous waste storage facility. Closure activities were completed in accordance with applicable regulations for hazardous waste storage facilities including Minnesota Rules Chapter 7045 (Minnesota Hazardous Waste Regulations), and 40 CFR Part 264 (Federal Hazardous Waste Regulations). A Closure Plan for the RRC hazardous waste storage facility was prepared by the University and included in their facility permit (RCRA Part B Permit). The Closure Plan provided general information concerning facility closure requirements. Prior to initiating facility closure, a Closure Work Plan dated March 27, 1996 was prepared by Peer and submitted to the MPCA. The Closure Work Plan included detailed descriptions of the methods, procedures and approach for facility closure. The Closure Work Plan was approved by the MPCA in a letter to the University dated April 17, 1996. Subsequently, the University implemented the Closure Work Plan and prepared closure certification reports for each building. These closure reports were ultimately submitted to and approved by the MPCA, and the MPCA issued closure letters for each building.

7.2.16 Rosemount Agricultural Center Petroleum Release Remedial Investigation and Corrective Actions, 1994-95 (Peer File #4033).

Peer assisted the University on MPCA Leak #2529. A 500-gallon leaded gasoline UST was removed from the Station Service Center in 1991. Approximately 180 cubic yards of petroleum impacted soil was excavated at the time the UST was removed. A remedial investigation and corrective action design (RI/CAD) were subsequently completed at the site. As part of the CAD, a soil vapor extraction (SVE) well was installed. Analytical testing of a ground water sample collected from a temporary monitoring well installed in the extraction borehole indicated potential ground water contamination existed at the site. The MPCA requested that additional investigation be completed to evaluate potential ground water impacts. The investigation was to include installation of three additional ground water monitoring wells.

The soil vapor extraction system had been previously operating for a period of approximately one year; however, the system had been shut down by early 1994. The system needed to be re-started and operated for an additional year with quarterly monitoring.

Peer was retained to install three additional ground water monitoring wells; re-start the vapor extraction system; develop and survey the three new monitoring wells; sample the three monitoring wells and have the samples analyzed for GRO, VOCs, BTEX, total xylenes, methyl tert-butyl ether, and/or dissolved lead; sample the vapor extraction system emissions on a quarterly basis and monitor the system's operating parameters; complete a ground water receptor survey; and complete an annual report and three quarterly reports for submittal to the MPCA.

Significant findings of Peer's RI/CAD activities included the following:

- ◆ Native soil consists of well graded outwash sand.
- ◆ Ground water flow fluctuated to the south, southwest, and northwest.
- ◆ In two rounds of ground water sampling, none of the analytical parameters tested for were detected at or above method detection limits in any of the monitoring wells.
- ◆ The results of the analytical tests performed on the SVE stack emissions were all below the laboratory detection limit.

Based on the data, it appeared that the extent and magnitude of the petroleum release had been defined with a limited amount of impacted soils remaining in-place. Ground water was not impacted by the release. The MPCA closed the file on this release on October 4, 1994.

7.2.17 RROC, 1605 160th Street South, Pesticide Site Investigations and Corrective Actions, 1994-2002, and Land Application of Pesticide Contaminated Soil and Rinsate, 1995 and 2000 (Peer File #4172).

In 1994, USTs used for collecting pesticide rinsate were removed from three locations on the site. During tank removal activities, visual evidence of pesticide contaminated soil was observed surrounding the tanks. The Minnesota Duty Officer and the Minnesota Department of Agriculture (MDA) were notified of the release on October 4, 1994.

In 1998, a comprehensive remedial investigation examined eight additional areas at the site, which were identified as being high risk areas for agricultural chemical contamination. Of the areas investigated, Peer recommended and the MDA approved corrective actions for the following four areas:

- ♦ The Herbicide and Fungicide Storage building and Rinsate Tank Area located adjacent to Building 621 where 100 cubic yards of soil was excavated to a depth of approximately 13.5 feet along with the removal of the rinsate tank in 1994.
- ♦ The UST area near Building 706 where 20 cubic yards of soil was excavated to a depth of seven feet along with a rinsate tank in 1994.
- ♦ The UST area near Building 709 where 20 cubic yards of soil was excavated to a depth of seven feet along with a rinsate tank in 1994.
- ♦ The former lagoon area where 730 cubic yards of soil to a depth of six feet was excavated in 2000.

All excavated soil was land applied to 169 acres of land as approved by the MDA. Land application was completed in May 1995 and in November and December 2000. At the conclusion of the soil corrective actions completed at the site, one subsurface sample in the former lagoon area and one near Building 709 slightly exceeded soil cleanup goals for alachlor and trifluralin. There were also slight exceedances of pesticide cleanup goals at the base of the UST excavation near Building 621. This soil was not removed because it was determined that the contaminants left in place did not pose an unreasonable risk for adverse affects to human health or the environment.

The remedial investigation also included the installation of four monitoring wells and temporary ground water sampling probes, which identified deep ground water contamination immediately downgradient from identified sources areas. Subsequent to soil corrective actions and periodical ground water monitoring, it was determined that the contamination in ground water did not pose an unreasonable risk for adverse affects to human health or the environment. The monitoring wells were properly abandoned in 2001.

Based on the available information, the MDA issued a determination on July 21, 2002 to take no further action under Minn. Stat. 18D (2000) and 115B (2000) against the University Research and Outreach Center and successive owners of the property with respect to the identified release at the site.

- ♦ Dakota County provided a list and associated map which reportedly identifies 110 alleged abandoned waste disposal sites at the subject property. Based on descriptions provided by the County, these waste sites appear to be related to past GOW operations and post-GOW property use by the University and University tenants. There is limited information regarding the nature and/or potential for impacts from these waste sites. There is a potential that one or more of these waste site may contain hazardous materials that could impact soils and/or ground water at the property. This potential for impacts to soils and ground water represents a recognized environmental condition.
- ♦ A number of past and present tenants that previously leased or are currently leasing portions of the subject property have or currently store and handle hazardous substances and/or petroleum products and generate associated waste materials. Activities of several past tenants resulted in releases which have been addressed (see Section 8.2). Given the nature of some of the past and current tenant operations (e.g. automotive repair, above and underground petroleum storage, painting and manufacturing operations, research labs, land application of manure) there is a potential that unreported releases of hazardous substances and/or petroleum products may have occurred at the subject property. This potential for impacts to soils and ground water represents a recognized environmental condition.

8.2 HISTORICAL RECOGNIZED ENVIRONMENTAL CONDITIONS

The ASTM E 1527-05 Standard defines the term *historical recognized environmental condition* as meaning “an environmental condition, which in the past would have been considered a recognized environmental condition, but which may or may not be considered a recognized environmental condition currently”.

This assessment has identified the following historical recognized environmental conditions in connection with the subject property:

- ♦ Based on a review of the government records search (see Section 4.3.2), the following releases have been reported on the subject property:
 1. LEAK# 4928: University of Minnesota – Rosemount, 15325 Babcock Avenue, an underground storage tank release was reported on December 23, 1991 and was closed by the MPCA on May 26, 1992.
 2. LEAK# 3682: Navy Reserve Intelligence Area 10, 14950 Akron Avenue, an underground storage tank release was reported on December 20, 1990 and was closed by the MPCA on January 23, 1991.

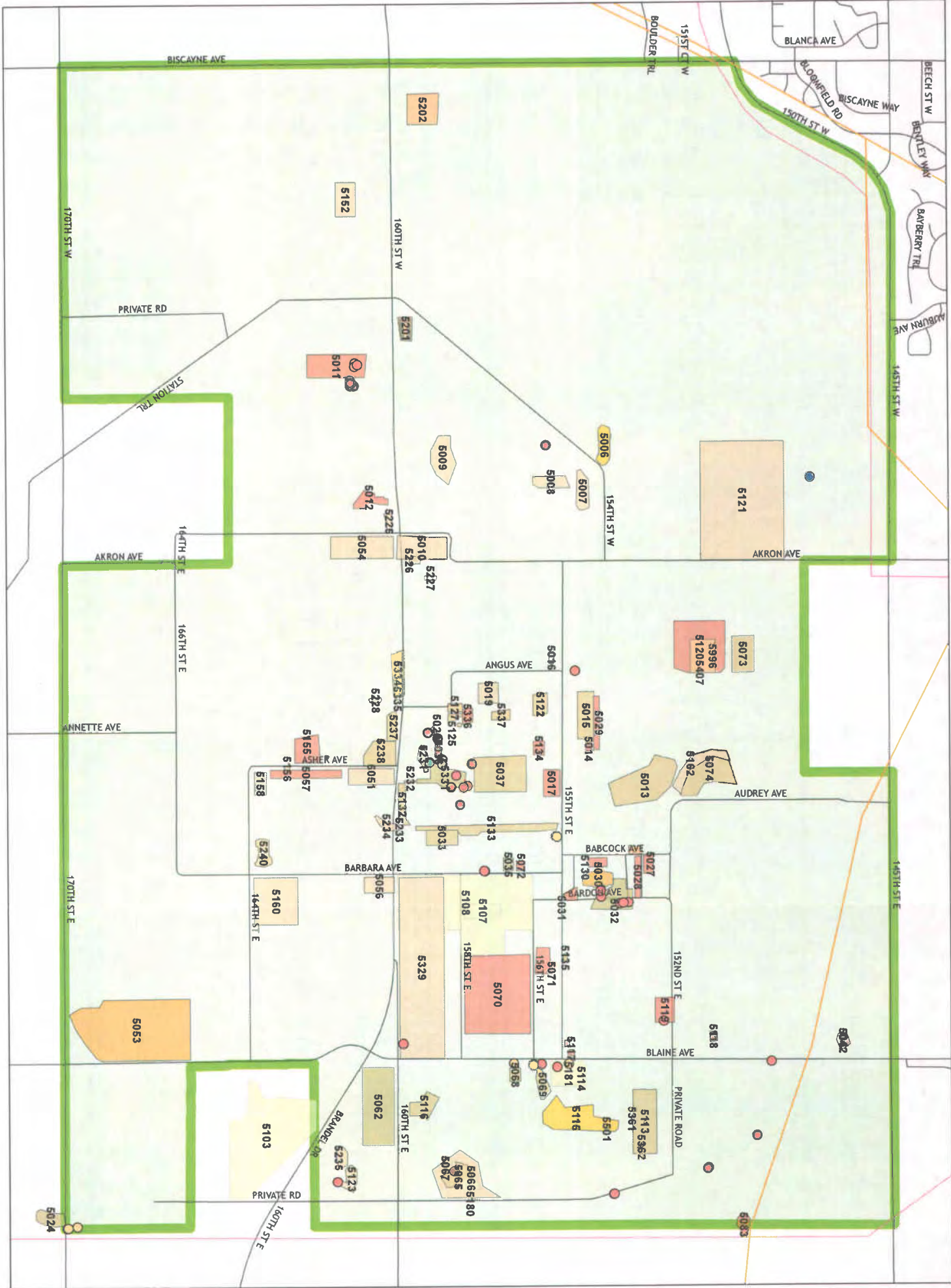
3. LEAK# 13710: Navy Reserve Intelligence Area 10, 14950 Akron Avenue, a release of gasoline was reported on October 27, 2000 and was closed by the MPCA on January 29, 2002.
4. Navy Reserve Intelligence Area 10, 14950 Akron Avenue, a release of 30 gallons of mineral oil was reported on October 25, 2005 and was closed by the MPCA on October 31, 2005.
5. LEAK# 2529: Agricultural Experiment Station, 1605 160th Street West, an underground storage tank release was reported on May 14, 1990 and was closed by the MPCA on October 4, 1994.
6. LEAK# 4758: Agricultural Experiment Station, 1605 160th Street West, an underground storage tank release was reported on October 25, 1991 and was closed by the MPCA on January 21, 1993.
7. LEAK# 4759: University of Minnesota, 1605 160th Street West, an underground storage tank release was reported on October 26, 1991 and was closed by the MPCA on January 21, 1993.
8. LEAK# 7504: Rosemount Agricultural Center, 1605 160th Street West, an underground storage tank release was reported on June 21, 1994 and was closed by the MPCA on September 13, 1995.
9. LEAK# 7154: Ag Research Center, 2375 160th Street West, an aboveground storage tank release was reported on January 19, 1994 and was closed by the MPCA on September 26, 1994.
10. A release of 55 gallons of used/waste oil was reported at the Rosemount Research Center, 160th and Blaine, on July 2, 2004 and was closed by the MPCA on July 8, 2004.
11. Three releases of unidentified material were reported at Buildings 313, 315, 610, 612, 621, 706, and 709 at the University of Minnesota Rosemount Experimental Station and were subsequently closed by the MDA on August 1, 2002.
12. LEAK# 13435: U of MN Building 179, Rosemount Research Center, an aboveground storage tank release was reported on May 12, 2000 and was closed by the MPCA on May 20, 2000.

The “closed” designation indicates that the regulatory agency has determined that the concerns at these sites do not appear to represent a material threat to human health or the environment but does not necessarily indicate that no contamination exists. Documented soil and/or ground water impacts may remain at some or all of these sites. Since these releases have been “closed” by the MPCA and/or MDA, these releases represent a historical recognized environmental condition as defined by the ASTM Standard at this time. However, any future redevelopment and/or property transfer of these areas may require additional investigation and/or cleanup; thus, reclassifying these releases as recognized environmental conditions.

FROM PERL 2006 Phase I
 ANSWERS: Jim Aron of Bar

Building ID No.	Water Supply	Heating Sources	Sewer System	GDW Use	Post GDW Use	Notes	General Comments
Solar House	University system	Electric and wood	Private septic	NA	Residential	Built 1974. Not accessed.	
TC-42	Formerly on University system	Formerly LP and oil	Formerly on private septic		Feedlot	Demolished approx four years ago. ACM removed by University.	
TC-192	Private well	LP	Private septic		Residential	Consists of dwelling, garage, and former milk cooler house (which also has a well). Septic updated in 1980s. Pipe insulation.	
TA-Valley RC Field	NA	Electric	NA		radio-controlled airplanes	Consists of a small office	NOT IN UIMA
Veterinary Medicine	University system	Natural gas	Private septic		Veterinary Medicine	Consists of a house (TC-47), a barn, a garage, an equipment shed, a silo, an open hay storage shed, an old dairy barn, a liquid manure pit, and two open air animal housing buildings. House, barn, and animal housing buildings have individual septic. Vehicle maintenance chemicals stored in metal shed with floor staining.	Concrete-lined liquid manure pit. Animal fluids to septic. Chemical and petroleum run-off.
Ag Exp Station - Area 1	Private well	LP	Private septic		Administration	One office building	CEA/RE SERVICES (SOC'S)
Ag Exp Station - Area 2					Dairy - demolished in the 1980s	Not accessed.	DAIRY COMPLEX (Biscayne)
Ag Exp Station - Area 3	Private well	LP	Private septic		Agronomy	Buried gas tank and pump deposited on map. Multi-building	WEST COMPLEX
Ag Exp Station - Area 4	Private well	Natural gas	Private septic		Turkey	Multi-building. Two wells. Bactericides and disinfectant storage. Drain fields for child houses except for Bldg 411, which drain directly into ground. No current storage tanks. Minor petroleum storage.	DUTHY
Ag Exp Station - Area 5	Private well	LP	Private septic		North Beef, Sheep and Swine	Multi-building. Two water wells. Former petroleum ASTs.	NOT IN UIMA
Ag Exp Station - Area 6	Private well	LP	Private septic		Station Service Center	Multi-building. Petroleum ASTs present. Former USTs pulled (investigated). Pesticide storage in Bldg 606. In-ground hydraulic lift and vehicle maintenance chemical and oil storage in Bldg 610 (maintenance shop) with floor staining. Floor drain reportedly discharges to catch basin and then directly into ground.	Investigated by Perl (file #4172)
Ag Exp Station - Area 7	Private well	LP	Private septic		Plant Pathology	Multi-building. Not accessed. Two water wells. Petroleum AST	Investigated. SOUTH COMPLEX
Ag Exp Station - Area 10	Private well	LP	Private septic		Agricultural Engineering	Multi-building (not accessed). Gas AST for generator.	Tank use. SOC #3

Post Gopher Ordinance Works



Waste Sites

- | Waste Sites | | Monitoring Wells | |
|-------------|--|------------------|-----------------------------|
| | Other | | Current vs Original Use |
| | Agricultural Disposal | | Monitoring, Monitoring |
| | Hazardous Waste Disposal | | Registered, Monitoring |
| | Hazardous Waste Disposal | | Sealed, Monitoring |
| | Household or Farm Dump | | Sealed, Test Well |
| | Industrial Waste Disposal | | Pipelines |
| | Large, Unlimited Variety | | Electric Transmission Lines |
| | Mixed Municipal/Industrial | | Electric Substations |
| | Mixed Municipal/Industrial/Hazardous Waste | | Study Area |
| | Municipal waste facility/site | | |
| | Spill, Leak, Leach or Injunct Release | | |

NOTE: This map includes dumps from Gopher Ordinance Works.



This drawing is neither a legally recorded map nor a survey and is not intended to be used as one. This drawing is a compilation of records, information and data located in various city, county and state offices and other sources, affecting the area shown, and is to be used for reference purposes only. Dakota County, Environmental Management Department.

Prepared on 20 Jul 2006 by Dakota County Environmental Management Department staff.



University of Minnesota U More Park
Dakota County Environmental Management Waste Site Inventory List
May 22, 2006

Site ID Number	Site Name	Site Size (Acres)	Address - City	MPCA Leak #	Waste Site Type - Description
5006	AES 155th Street West / North Dump	2.62	Rosemount	0	Mixed Municipal/Industrial
5007	AES 155th Street West / Central Dump	2.53	Rosemount	0	Large, Unlimited Variety
5008	AES 155th Street West / South Dump	2.31	Rosemount	0	Large, Unlimited Variety
5011	AES Hazardous Waste Generator Shops	7.96	Empire Township	0	Hazardous Waste Disposal
5010	AES Akron Avenue Dump East	6.55	Rosemount	0	Large, Unlimited Variety
5073	GOW Burning Ground	4.74	Rosemount	0	Industrial Waste Disposal
5074	RRC Audrey North	9.12	Rosemount	0	Industrial Waste Disposal
5013	RRC Audrey South	11.95	Rosemount	0	Industrial Waste Disposal
5014	RRC HWF Building D	0.51	Rosemount	0	Hazardous Waste Disposal
5015	Jensen Airstrip	4.65	Rosemount	0	Industrial Waste Disposal
5016	Minnesota Resource Stockpile	0.32	Rosemount	0	Industrial Waste Disposal
5017	Jensen Office Disposal	2.57	Rosemount	0	Hazardous Waste Disposal
5018	RRC HWF Building B	0.32	Rosemount	0	Hazardous Waste Disposal
5019	GOW Waste Dump	2.40	Rosemount	0	Large, Unlimited Variety
5020	RRC HWF Building C	0.20	Rosemount	0	Hazardous Waste Disposal
5021	GOW Tunnel & Sumps	0.10	Rosemount	0	Industrial Waste Disposal
5022	GOW Coal & Tear Gas	0.08	Rosemount	0	Industrial Waste Disposal
5023	RRC Hazardous Waste West Burn Pit	0.31	Rosemount	0	Mixed Municipal/Industrial/Hazardous Waste
5025	MPD Bomb Disposal	0.17	Rosemount	0	Industrial Waste Disposal
5331	RRC 160th Street East Dump	4.14	Rosemount	0	Mixed Municipal/Industrial/Hazardous Waste
5335	RRC Septage Sludge	1.12	Rosemount	0	Industrial Waste Disposal
5108	SMC Composting	50.32	Rosemount	0	Regulated Waste Facility
5107	SMC Processing	3.12	Rosemount	0	Regulated Waste Facility
5103	SKB Organic Composting	35.99	Empire Township	0	Regulated Waste Facility
5009	AES Akron Dump West	5.03	Rosemount	0	Large, Unlimited Variety
5029	Jensen Hanger Disposal	1.92	Rosemount	0	Hazardous Waste Disposal
5133	GOW Rail Yard	5.70	Rosemount	0	Industrial Waste Disposal
5033	GOW Train Pole Yard	2.84	Rosemount	0	Industrial Waste Disposal
5051	RRC AES	4.25	Empire Township	0	Large, Unlimited Variety
5152	AES Disposal	4.03	Empire Township	0	Large, Unlimited Variety
5054	AES Akron Dump SE	8.09	Empire Township	0	Large, Unlimited Variety
5155	RRC Cesspool & Seepage	3.77	Empire Township	0	Hazardous Waste Disposal
5156	RRC Transformer Fire	0.13	Empire Township	0	Large, Unlimited Variety
5057	Astro Reese Hazardous Waste Generator	3.32	Empire Township	0	Hazardous Waste Disposal
5158	Dakota County Technical College Junkyard & Dump	1.57	Empire Township	0	Large, Unlimited Variety
5056	AES / RRC #2	2.78	Empire Township	0	Large, Unlimited Variety
5160	AES / RRC #3	12.16	Empire Township	0	Large, Unlimited Variety
5062	Local #49 Disposals	14.13	Empire Township	0	Mixed Municipal/Industrial/Hazardous Waste
5065	Gravel Pit Disposal	11.04	Rosemount	0	Large, Unlimited Variety
5066	RRC Pond Sludge	2.93	Rosemount	0	Industrial Waste Disposal
5067	RRC Oxidation Pond	0.25	Rosemount	0	Regulated Waste Facility
5068	GOW Sewage Plant	0.86	Rosemount	0	Industrial Waste Disposal
5069	RRC #49 Stockpile	1.63	Rosemount	0	Industrial Waste Disposal
5070	Minneapolis Bomb Squad	30.12	Rosemount	0	Hazardous Waste Disposal
5071	RRC Building 217A	2.15	Rosemount	0	Hazardous Waste Disposal
5072	RRC Building 706D-706AA	0.46	Rosemount	0	Hazardous Waste Disposal
5113	GOW & UMRRC Oleum	8.93	Rosemount	0	Industrial Waste Disposal
5114	UMRRC HWF Building A	0.32	Rosemount	0	Hazardous Waste Disposal
5115	UMRRC Local #49 South	9.07	Rosemount	0	Mixed Municipal/Industrial
5116	GOW Ballistics Lab STS	2.64	Rosemount	0	Industrial Waste Disposal
5117	RRC Building 723A Klug Sheetmetal	0.23	Rosemount	0	Hazardous Waste Disposal
5118	RRC US Transformer Betz Disposal	0.42	Rosemount	0	Hazardous Waste Disposal
5119	RRC US Transformer Disposal	2.73	Rosemount	0	Hazardous Waste Disposal
5330	RRC Building 719A Recke Engineering	0.18	Rosemount	0	Hazardous Waste Disposal
5027	RRC Building 713A	1.02	Rosemount	0	Hazardous Waste Disposal
5028	RRC Building 717A	1.44	Rosemount	0	Hazardous Waste Disposal
5130	Building 725A	1.00	Rosemount	0	Hazardous Waste Disposal
5031	Porter Electric Disposals	0.73	Rosemount	0	Hazardous Waste Disposal
5032	George's Used Equipment	5.13	Rosemount	0	Mixed Municipal/Industrial/Hazardous Waste
5134	HWF Building B Solvent	0.90	Rosemount	0	Hazardous Waste Disposal
5135	746C	0.20	Rosemount	0	Mixed Municipal/Industrial/Hazardous Waste
5035	706A	0.73	Rosemount	0	Mixed Municipal/Industrial/Hazardous Waste
5036	RRC East Burn Pit	0.34	Rosemount	0	Hazardous Waste Disposal
5037	Local #49 Heavy Equipment	10.76	Rosemount	0	Industrial Waste Disposal
5362	Sulfuric Acid Tank (H2SO4)	0.11	Rosemount	0	Industrial Waste Disposal
5360	Fuel Oil Tanks	0.03	Rosemount	0	Spill, Leak, Leach or Inject Release
5361	Liquid Nitrogen Tank (NH4)	0.05	Rosemount	0	Industrial Waste Disposal
5042	Superintendent PCB Disposal	0.92	Rosemount	0	Hazardous Waste Disposal
5053	Organic Conversions Manure Compost	37.58	Empire Township	0	Agricultural Disposal
5120	GOW Hazardous Waste Burn Pit	15.16	Rosemount	0	Hazardous Waste Disposal
5121	AES Beef Research North	57.71	Rosemount	0	Large, Unlimited Variety
5122	RRC Minnesota Resource Fe stock	1.77	Rosemount	0	Industrial Waste Disposal
5336	RCC HWF Building C	0.89	Rosemount	0	Hazardous Waste Disposal
5337	RRC Waste Disposal Site	1.03	Rosemount	0	Industrial Waste Disposal
5125	RRC NG Teargas Disposal	0.35	Rosemount	0	Industrial Waste Disposal
5334	Septage Disposal Complaints	2.94	Rosemount	0	Industrial Waste Disposal
5127	RRC Clearwell Sumps Building C	0.71	Rosemount	0	Industrial Waste Disposal
5024	170th Street East Dump	2.19	Empire Township	0	Mixed Municipal/Industrial/Hazardous Waste
5162	RRC 152nd Street East Dump	3.54	Rosemount	0	Large, Unlimited Variety
5329	Dump NW of 160th Street E & Blaine Avenue	47.42	Rosemount	0	Large, Unlimited Variety
5225	GOW Akron Avenue & 160th Street Fill	0.58	Empire Township	0	Large, Unlimited Variety

5226	GOW Building 251-D Mound	0.46	Rosemount	0	Industrial Waste Disposal
5227	GOW Building 208-M mound	0.30	Rosemount	0	Industrial Waste Disposal
5229	GOW Coal Storage Ditch Fill	0.12	Rosemount	0	Industrial Waste Disposal
5230	GOW Coal Storage Road Fill	0.15	Rosemount	0	Industrial Waste Disposal
5231	GOW East Burn Pit & Demolition	1.05	Rosemount	0	Industrial Waste Disposal
5232	GOW Incinerator Stack Ruins	0.12	Rosemount	0	Industrial Waste Disposal
5132	GOW Salvage Yard	1.82	Rosemount	0	Industrial Waste Disposal
5233	GOW Incinerator Circa 1945	0.02	Rosemount	0	Industrial Waste Disposal
5234	GOW Rail Bend	0.88	Empire Township	0	Large, Unillimited Variety
5235	GOW East Pit Demolition & Logs	1.11	Empire Township	0	Large, Unillimited Variety
5240	GOW 222-A Foundations & Debris	2.03	Empire Township	0	Industrial Waste Disposal
5239	GOW Wood Debris Circa 1945	0.06	Empire Township	0	Industrial Waste Disposal
5237	GOW Sperry-Univac	1.61	Empire Township	0	Industrial Waste Disposal
5238	GOW Machine Storage Yard	4.15	Empire Township	0	Industrial Waste Disposal
5012	AES Storage & Spill	1.99	Empire Township	0	Hazardous Waste Disposal
5228	GOW Building 213-B Mound	0.32	Empire Township	0	Large, Unillimited Variety
5123	University of MN SE of 160th Street East Dump	1.86	Empire Township	0	Large, Unillimited Variety
5083	Wenzel Engineering Disposal South	1.27	Rosemount	0	Hazardous Waste Disposal
5030	Feed Lot	2.38	Rosemount	0	Agricultural Disposal
5407	Naval Satellite Operations Center LUST	1.75	Rosemount	3682	Spill, Leak, Leach or Inject Release
5996	Navy Reserve Intell Area 10 LUST	4.80	Rosemount	13710	Spill, Leak, Leach or Inject Release
5201	Rosemount Agricultural Center LUST	1.78	Rosemount	7504	Spill, Leak, Leach or Inject Release
5202	Ag Research Center LUST	5.57	Rosemount	7154	Spill, Leak, Leach or Inject Release
5203	Rosemount Research Center LUST	0.63	Rosemount	4928	Spill, Leak, Leach or Inject Release
5205	U OF M AGRONOMY UNIT LUST	1.25	Rosemount	4758	Spill, Leak, Leach or Inject Release
5204	U OF M STATION SERVICE CENTER LUST	0.82	Rosemount	4759	Spill, Leak, Leach or Inject Release
5206	Agricultural Experiment Station LUST	0.43	Rosemount	2529	Spill, Leak, Leach or Inject Release
5501	GOW Salt Dissolving Pit	0.03	Rosemount	0	Industrial Waste Disposal
5181	GOW Power Plant A Disposals	5.02	Rosemount	0	Industrial Waste
5180	GOW Coal Ash Pond	1.27	Rosemount	0	Industrial Waste