

Appendix B

Excerpts from USACE PA (2005) and Draft FSI (Bay West, 2008)

B.1 Historical Background Data from the 2005 Preliminary Assessment

Appendix B.1

Historical Background Data from the 2005 Preliminary Assessment

APPENDIX I
MAPS/DRAWINGS REFERENCES

Bibliography

National Archives and Records Administration-Central Plains Region. Record Group 270, Records of Gopher Ordnance Works. "Real Estate Gopher Ordnance Works, Segment "A" Military Reservation. Sheet 1 of 4, Drawing No. MINN. 1A., 17 November 1944

Dakota County Environmental Management

Maps

Map 1: Building Key and Index

Map 2: Process Wastewater System

Map 3: Segment A Real Estate (Circa 1944)

Map 4: Sanitary Sewer System

Map 5: Gopher Ordnance Works, Coates and Vermillion 7.5' Quads

Map 6: Surficial Geology

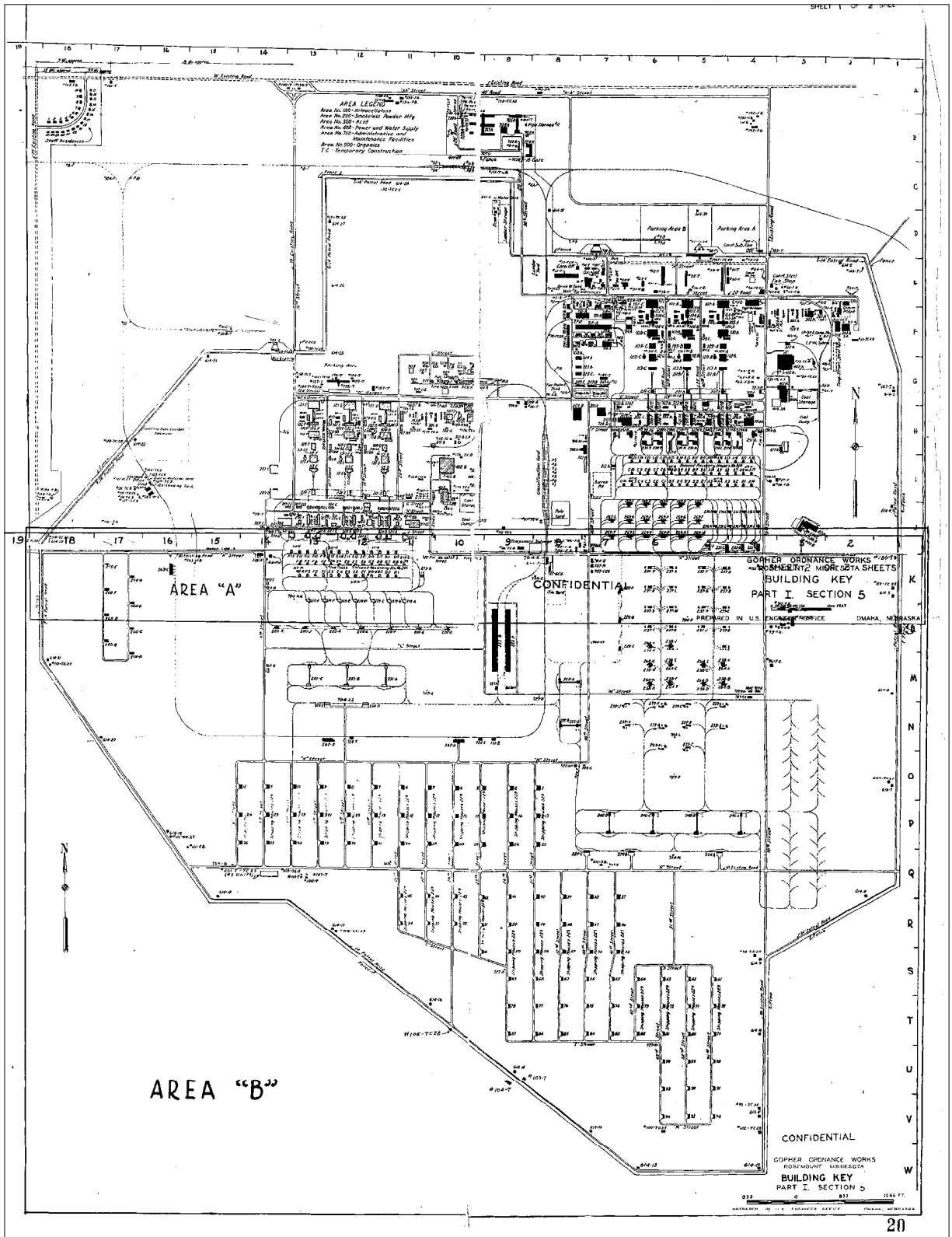
Map 7: Bedrock Geology

Map 8: Drinking Water Wells

Drawings

Drawing 1: Storage/Shipping Building

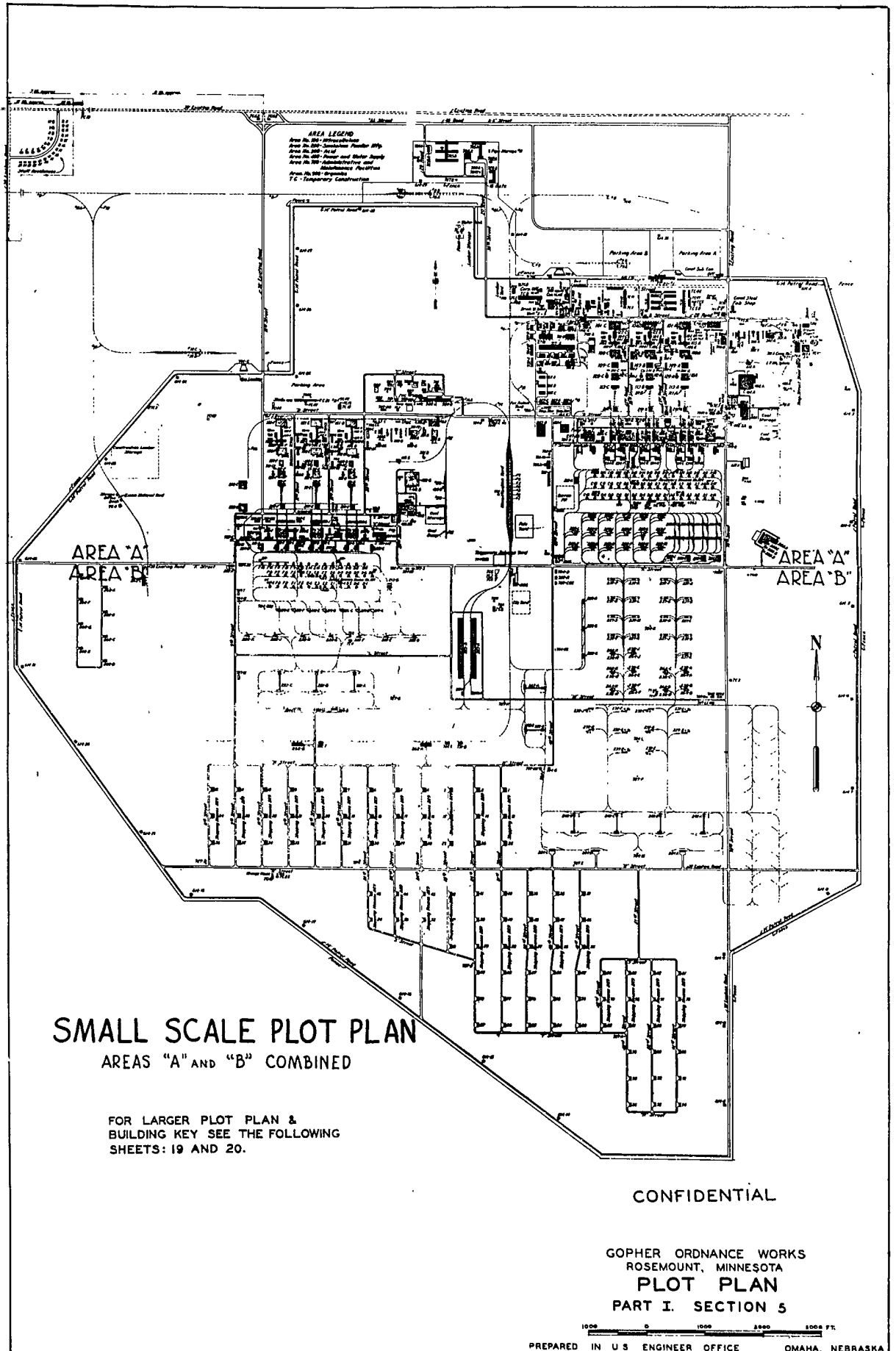
Drawing 2: Building 260 (DNT Igloo)



**BUILDING KEY
MAP 1**

FORMER GOPHER ORDNANCE WORKS
ROSEMONT, MINNESOTA

1:8,000



INDEX OF BUILDING PLANS

Building Number	Title	Page Number of Building Plan
101 A-B-C	Purified Cotton Storehouse	227
102 A-F Inc.	N/C Area Tank Farm	228
104 A	Cotton Dry House	229 & 230
104 & 122-B	Cotton Dry & Wood Pulp Dry House	229 & 230
104 & 122-C	Cotton Dry & Wood Pulp Dry House	229 & 230
105 A-F Inc.	Nitrating House	231 to 234
106 A-F Inc.	Spent Acid Filter	235
108 A-F Inc.	Boiling Tub House	236 to 238
109 A-F Inc.	Pulping House	239 to 240
111 A-B-E	N/C Slurry Tank House	241
112 A-F Inc.	Poacher Tub House	242
113 A-F Inc.	Blending Tub & Final Wringer	243 & 244
120 A-F Inc.	Saveall Pump House and Tank	245 & 246
121 D-E-F	Wood Pulp Storehouse	227
122 D-E-F	Wood Pulp Dry House	247
123 A-F Inc.	Wheeling Walk	248
201 A-F Inc.	N/C Lag Store House	249
202 A-M Inc.	Dehydrating Press House	250
202 SA & SB	Strong Alcohol Press House	251
203 A	Alcohol Storage Tank	None
203 B	Alcohol Storage Tank	252
203 C & D	Alcohol Storage Tank	None
205 A	DNT Screening House	253
206 A-F Inc.	Ether Mixing House	254 & 255
207 A-D Inc.	Ether & Alcohol Rect. House	256
207 AA-DD Inc.	Ether & Alcohol Storage	257 & 258
207 AC-BC-DC-EC	Caustic Mix House	259
208 A-M Inc.	Mixer House	260
209 A & B	Scrap Rework House	261
211 A-F Inc.	Horizontal Screen & Press House	262
213 A & B	Solvent Rec. CW & D House	263
214 A1 - A18 Inc.	Solvent Recovery Houses	264
B1 - B15 Inc.	Solvent Recovery Houses	264
C1 - C16 Inc.	Solvent Recovery Houses	264
D1 - D13 Inc.	Solvent Recovery Houses	264
E1 - E15 Inc.	Solvent Recovery Houses	264
F1 - F13 Inc.	Solvent Recovery Houses	264
215 A - M	Solvent Tank Shelters	265
217 A	Knife Grind & Die Shop	266
219 A - G Inc.	Water Dry Houses	267 & 268
220 A - K Inc.	Controlled Circulation Dryers	269 & 270
221 A-B-C	Blending Tower & Pack House	271 to 274 Inc.
222 A & B	Blending Tower & Pack House	271 to 274 Inc.
223 A & B	Box Storehouse	275

225-A

INDEX OF BUILDING PLANS

Building Number	Title	Page Number of Building Plan
224 A - E Inc.	Air Test Houses	276
226 A & B	Hydraulic Refrig. House	277
227 A - E Inc.	Dry Ingredient Houses	278
228 A	Ballistics Laboratory & Range	279 & 280
228 B - D Inc.	Const. Temp. Pwd. Mag.	281
229 1 to 96 Inc.	Shipping Houses	282
232 A	Box Repair Shop	283
233 A	Screen Cleaning House	284
234 A to D, G	Vertical Press House	285
234 K - R, Inc.	Vertical Press House	285
234 E-F-H-J	Vertical Press House	286
235 A - C, Inc.	Rifle Powder Water Dry House	287
236A - J, Inc.	Sweetie Barrel House	288
237A - T, Inc.	Tray Dryer & Fan House	289
238A - K, Inc.	Glaze Barrel House	290
239A - K, Inc.	Shaker Sieve House	291
240 A - D, Inc.	Rifle Powder Blending Tower, etc.	292 & 293
251 A - D, Inc.	Act. Carb. Solv. Recovery System	294
255 A	Bag Repair & Stencil House	295
260 A - H, Inc.	DNT Storage Igloo Type	296
262 A & B	Powder Transfer Platform	None
263 A B C	Powder Transfer Platform	297
264 A - K, Inc.	Barricades Glaze Bbl. House	298
269 A - T, Inc.	Water Dry House	299
301 A (LP) (HP)	L.P.&H.P. Anhyd. Ammonia Stor.	300 & 301
& 301 B (LP) (HP)	L.P.&H.P. Anhyd. Ammonia Stor.	300 & 301
302 A & B	Ammonia Oxidation Plant	302 to 304
303 A (NA) B (NA)	Nitric Acid Concentration	305 to 307
303 A (SA)	Sulphuric Acid Concentration	308 to 313
305A	Acid Area Tank Farm	314 to 321
401 A	Power House	322 to 339
401 B	Power House	None
402 A & B	Reservoir Settling Basin	340 to 342
404A & B	Ranney Wells & Pump House	343
404 C	Ranney Wells & Pump House	344
404 D	Ranney Wells & Pump House	345
406 A & B	Salt Dissolving Pit	346
410 A & B	Ash Disposal Basin	None
411 A & B	Drinking Water Well	347
412 A & B	Pump House	348 to 349
412 C	Water Well Booster Pump House	350
414 A	River Pump House	351
601 A	Track Scales	352
610 A	Sewage Pump Stations	353

INDEX OF BUILDING PLANS

Building Number	Title	Page Number of Building Plan
612 A & B	Sewage, Acid Neut. Plant	354 to 355
612 C	P. H. Recording Station	356
614 1 & 8	Guard Towers (Type 1)	357
614 2 - 31	Guard Towers (Type 2)	358
617	Sewage Treatment Plant	359 to 361
701 B & C	Gate House & Clock Alleys	362
702 A	Communications Building	363
703 A	Main Office Building	364 to 366
704 A, AA	Supervisor's Offices: N/C	367
B to E & DD	First Stages & Sch. & Finishing Stages	367
704 W	Maintenance	368
704 G & H	Magazine & Yard Master	369
704 U	Safety & Fire Inspection	370
704 K to M	Finishing Op.	369
KK, LL, MM	Finishing Op.	369
704 F	Transportation	371
705 A	Employment & Examination Office.	372
706 A	Laboratories: Main	373
706 B & C	Acid A. R. & Sup. Off.	374
706 D	Stability	375
706 J & K	Cotton Dry Laboratory	376
706 AA, BB, CC	Acid Stg. Laboratory	377
707 A, AA	Charge Houses: Acid	378
Bt. D, TT	Nitration - - - - -	378
ZZ, L to P, YY	First Stage - - - - -	378
GG, H, J, LL & U	Organic, Shops & Adm. - - - - -	378
707 E, F, UU, WW	Purification	
-- DDD, EEE	Solvents - - -	379
BBB	Water Dry - - -	379
W	Cannon Towers	379
X, XX	Rifle Towers	379
JJ, FFF	Transportation	379
GGG	Yard Masters	379
RR, SS & AAA	Women Operators	379
707 CCC	Cannon Tower	380
HH	Magazine	380
R, S & T	Water Dry	380
708A	Cafeteria	381
709A	Fire Headquarters	382
709 B & C	Fire Station	383
712 A	Flag Pole	None
713 A & B	General Storehouse	384
714	Scrap Pwd. Can Shelter	385
714 A	Material Shed	386

INDEX OF BUILDING PLANS

Building Number	Title	Page Number of Building Plan
715 A	Oil Storage	387
715 B	Paint Storage	388
716 A	Garage & Repair Shop	389
716 B	Car Wash & Grease Shop	390
717 A	Combined Shops	391
717 B	Sand blast House	392
718 A	Locomotive House	393
718 B	Sand Dryer House & Bin	394
718 C	Fuel Oil Pump	395
719 A & B	Medical Service Building	396
720 A	Guard Headquarters	397 to 399
721 A	Ord. Ins. Off. & Lab.	400 to 401
722 A, Y, G, GG, C, CC, F, FF, N, P, M & U	Area Shops: Acid (722 A-Y-G-GG) N/C (722 C-CC) First Stage (F-FF) Finish Stage (N-P) Organic (722 M) Riggers (722 U)	402
722 B & BB	Boiling Tub	403
722 D	Paint	404
722 E & T	Chocking Imbr.	405
722 W	First Stage	406
723 A	Laundry	407
724 B-H Inc.	Gasoline Station	408
725 A, B & C	Parking Garage	409
726 A	Acetylene Storage	410
727 A - H Inc.	Comfort Stations	411
728 A	Staff Garage	412
729 A- D Inc.	Spare Machine Stg.	413
730 A	Guard Hdqs. Garage	414
731 A & B	Salvage Building	415
733 A	Service House	416
740 A, B & C	Tool Storage	None
742 A	Lumber Stg. Shed	417
903	Benzine Nitrating House	None
904	Separating & Neutral House	None
906	Still House	None
907	Reducing House	None
908	Iron Storage	418
909	Aniline Stg. Tanks	419
910	Autoclave Charg'g House	420
911	Autoclave House	421 & 422
912	Ammonia Recovery	423 & 424
913	D.P.A. Vacuum Still House	425
914	Oil Super Heater House	426
915	Fuel Oil Storage	427

INDEX OF BUILDING PLANS

Building Number	Title	Page Number of Building Plan
920 A	D. P. A. Store House	428
920 B	D. P. A. Store House	428
921	Organic Raw Material	428
924	Car Heater House & Unloading Platform	429
1101 (15 to 255)	Staff Residence	430 to 437
1501	Oleum Plant	438
1T	Government Field Office	None
2T	Foreman Shack	None
3T	Foreman Shack	None
4T	Toilet	439
5T	Guard House	None
6T	Foreman Shack	None
7T	Guard House	None
8T	Clock Alley	None
9T	Boiler House	440
10T	Guard House	None
11T	Toilet	439
12T	Carpenter Shop	441
13T	Carpenter Office	442
14T	Paint Shop	None
15T	Labor & Con. Office	443
16T	Carp. Millwright & Mach. Shop	444
17T	Boiler House	None
18T	Millwright Office	445
19T	Fire Siren Tower	None
23T	Electric Shop	446
24T	Crane Repair Shop	447
25T	Rigger & Crane Office	448
26T	Paper Shredder	None
27T	Pipe Office	449
28T	Pipe Shop	450
29T	Oil Storage	None
30T	Government Inspectors	451
31T	Boiler House	None
32T	Automotive Repair	452
33T	Transportation Office	453
34T	Sanitation Building	454
35T	Truck Storage	None
36 FR	Farm Residence	None
37T	Canteens	455
38T	Checkers & Clock Alley	456
39T	Truck Storage Cement Dept.	None
40T	Paymaster Office	457

INDEX OF BUILDING PLANS

Building Number	Title	Page Number of Building Plan
41 T	Safety Office	458
42 F.R.	Farm Residence	None
43 T	Sub-contractors' Facilities	459
44 T	Truck Scale House	None
45 T	Re-steel Shop	None
46 T	Lead Burner Shop	None
47 F.R.	Farm Residence	None
48 F.B.	Farm Garage	None
49 F.B.	Machine Shed	None
50 T	Field Office	None
51 T	Material Storage	None
52 T	Material Storage	None
53 T	Boiler House	460
54 T	Toilet	439
55 T	Field Office	None
56 F. B.	Farm Shed	None
57 F. B.	Farm Barn	None
58 F. R.	Farm Residence	None
59	Farm Residence	None
60 T	Guard House	None
61 T	Guard House	None
62 T	Guard House	None
63 T	Guard House	None
64 F.B.	Farm Barn	None
65 F.R.	Farm Residence	None
66 F. B.	Farm Building	None
67 S.H.	School House	None
68 T	Toilet	439
69 T	Fire Station	None
70 T	Store Room	None
71 T	Store Room	None
72 T	Store Room	None
73 T	Cement Shed	None
74 T	Tool Shed	None
75 T	Guard House	None
76 T	Toilet	439
77 T	Boiler House	461
78 T	Guard House	None
79 F. R.	Farm Residence	None
80 T	Boiler House	460
81 T	Field Office	None
82 T	Storage Shed	462
83 T	Store Room	None

INDEX OF BUILDING PLANS

Building Number	Title	Page Number of Building Plan
84 F. B.	Farm Milk Barn	None
85 F.B.	Farm Machine Shed	None
86 F.B.	Farm Barn	None
87 F.R.	Farm Residence	None
88 F.R.	Farm Residence	None
89 T	Guard House	None
90 F.B.	Farm Granary	None
91 F.B.	Farm Barn	None
92 F.B.	Farm Barn	None
93 F.B.	Farm Milk House	None
94 F B	Farm Garage	None
95 F R	Farm Residence	None
96 F R	Farm Residence	None
97 T	Guard House	None
98 T	Guard House	None
99 T	Toilet	439
100 T	Toilet	439
101-SH	Rural School	None
102 T	Guard House	None
103 T	Toilet	439
104 T	Pistol Range Shed	None
105 T	Guard House	None
106 T	Toilet	None
107 T	Time Office	None
108 T	Sanitary Building	None
109 T	Sanitary House	None
110 T	Boiler House	463
111 F B	Farm Silo	None
112 T	Toilet	None
113 T	Toilet	None
114 T	Toilet	None
115 T	Guard House	None
116 F B	Farm Silo	None
117 T	Cement Shed	None
118 T	Field Office	None
119 T	Paint Shop	None
120 T	Field Office	None
121 T	Toilet	None
122 T	Field Office	None
123 T	Field Office	None
124 T	Field Office	None
125 T	Loading Dock	None
126 T	Store Room	None
127 T	Store Room	None

INDEX OF BUILDING PLANS

Building Number	Title	Page Number of Building Plan
128 T	Guard House	None
129 T	Guard House	None
130 T	Toilet	439
131 T	Toilet	439
132 T	Toilet	439
133 T	Guard House	None
134 T	Warning Shelter	None
135 F B	Farm Barn	None
136 F B	Farm Granary	None
137 F B	Farm Shed	None
138 F B	Farm Barn	None
139 T	Warning Shelter	None
140 T	Warning Shelter	None
141 T	Garage Shop	464
142 F B	Farm Barn	None
143 F. B.	Farm Silo	None
144 T	Pipe Shop	465
145 T	Field Office	None
146 T	Guard House	None
148 F R	Farm Residence	None
149 F B	Farm Barn	None
150 F B	Farm Silo	None
151 T	Field Office	None
152 T	Boiler Office	460
153 T	Clock Alley	456
154 T	Canteen	None
155 T	Guard House	None
156 T	Canteen	None
157 T	Field Office	None
158 T	Field Office	None
159 T	Machine Shop	None
160 T	Electric Shop	None
161 T	Pipe Shop	465
162 T	Boiler House	None
163 T	Field Office	None
164 T	Riggers Shed	466
165 T	Pipe Shop	465
166 T	Machine Shop	None
167 T	Electric Shop	None
168 T	Storage Shed	None
169 T	Storage Shed	None
170 T	Storage Shed	None
171 T	Tool Shed	None
172 T	Tool Shed	None

INDEX OF BUILDING PLANS

Building Number	Title	Page Number of Building Plan
173 T	Tool Shed	None
174 T	Carpentry Shed	None
175 T	Storage Shed	None
176 T	Tool Shed	None
177 T	Shelter House	None
178 T	Field Office	None
179 T	Tool Storage	None
180 T	Electric Shop	None
181 T	Rigger Shop	466
182 T	Field Office	467
183 T	Pipe Shop	465
184 T	Machine Shop	None
185 T	Carey Mfg. Co. Shop	None
186 T	Guard House	None
187 T	Toilet	None
188 T	Guard House	None
189 T	Guard House	None
190 T	Guard House	468
191 F R	Farm Residence	None
192 F R	Farm Residence	None
193 F B	Farm Garage	None
194 F B	Farm Milk House	None
195 T	Farm Barn	None
196 T	Warehouse	469
197 T	Garage	470
198 T	Paymaster Booth	None
199 T	Paymaster Booth	None
200 T	Toilets	None

Staff Residences

1100-1-S	431 to 434
2	" " "
3	" " "
4	" " "
5	" " "
6	" " "
7	" " "
8	" " "
9	" " "
10	" " "

INDEX OF BUILDING PLANS

Building Number	Title	Page Number of Building Plan
-----------------	-------	------------------------------

Staff Residences (Continued)

1100-11-S		435
12		436 - 437
13		" - "
14		" - "
15		" - "
16		" - "
17		" - "
18		" - "
19		" - "
20		" - "
21		" - "
22		" - "
23		" - "
24		" - "
25		" - "
	Plot Plan	430

Process Wastewater System



- Associated Buildings**
- 102 A Acid Tanks
 - 102 B Acid Tanks
 - 102 C Acid Tanks
 - 102 D Acid Tanks
 - 102 E Acid Tanks
 - 102 F Acid Tanks
 - 102 G Acid Tanks
 - 102 H Acid Tanks
 - 102 I Acid Tanks
 - 102 J Acid Tanks
 - 102 K Acid Tanks
 - 102 L Acid Tanks
 - 102 M Acid Tanks
 - 102 N Acid Tanks
 - 102 O Acid Tanks
 - 102 P Acid Tanks
 - 102 Q Acid Tanks
 - 102 R Acid Tanks
 - 102 S Acid Tanks
 - 102 T Acid Tanks
 - 102 U Acid Tanks
 - 102 V Acid Tanks
 - 102 W Acid Tanks
 - 102 X Acid Tanks
 - 102 Y Acid Tanks
 - 102 Z Acid Tanks

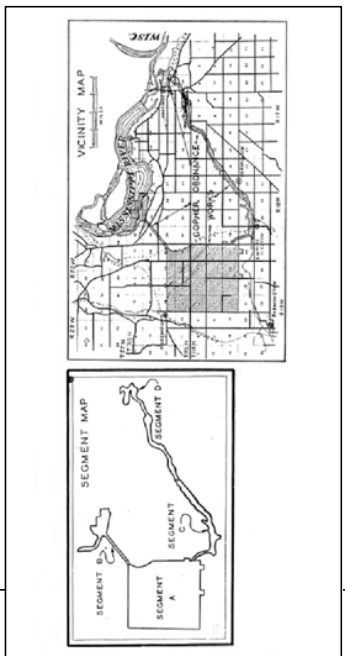
**PROCESS WASTEWATER SYSTEM
MAP 2
FORMER GOPHER ORDNANCE WORKS
ROSEMONT, MN**

Legend

- Yellow circle: Lake Street
- Red circle: Control
- Blue circle: Process
- Green circle: Administration
- Orange line: Primary Wastewater Lines
- Yellow line: Process
- Blue line: Administration
- Green line: Other

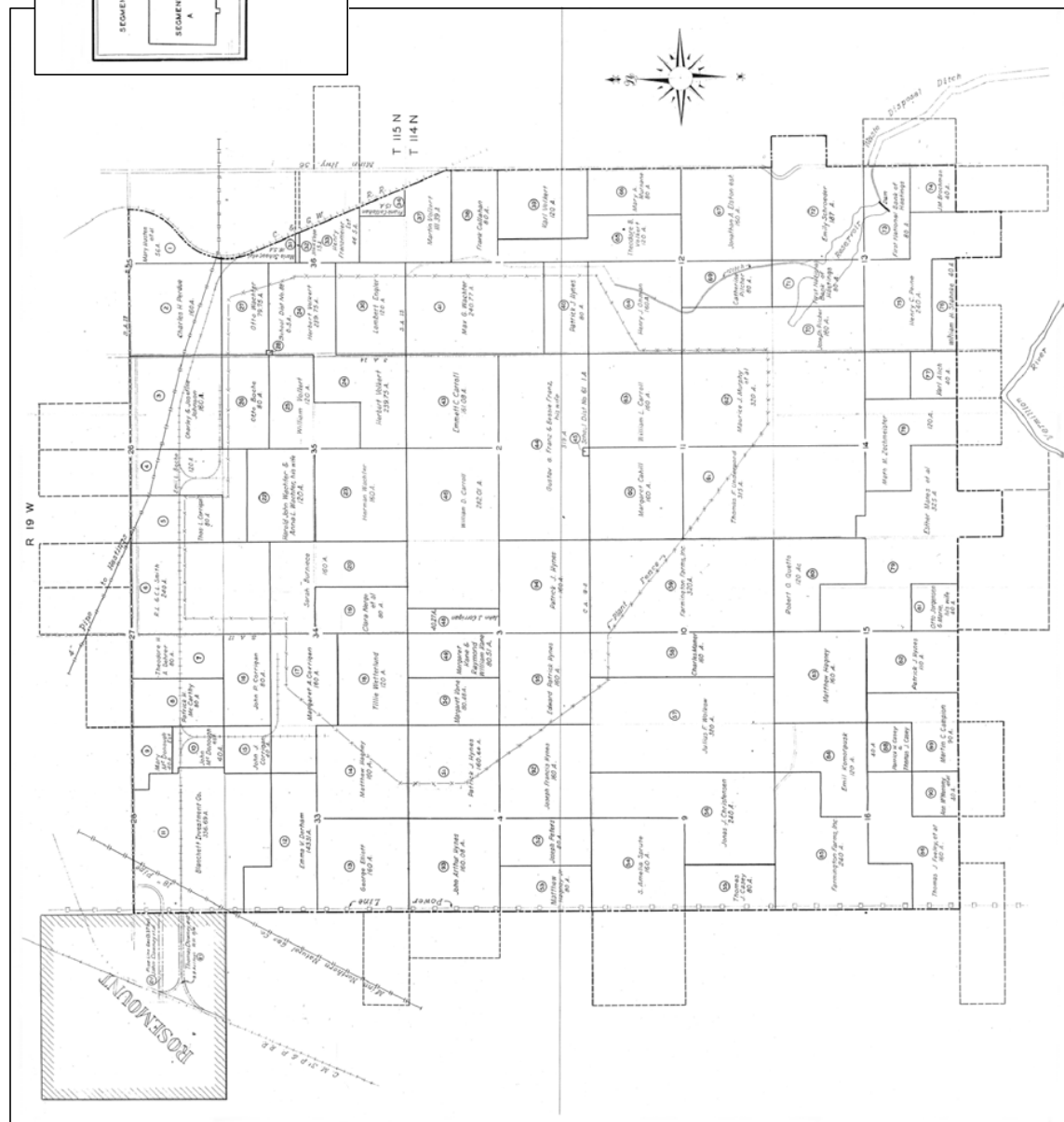


This map is a digital representation of the process wastewater system and is not intended to be used for any other purpose. It is the property of the City of Rosemont, Minnesota, and is provided for informational purposes only. The City of Rosemont, Minnesota, is not responsible for any errors or omissions on this map. © 2000 City of Rosemont, Minnesota. All rights reserved.



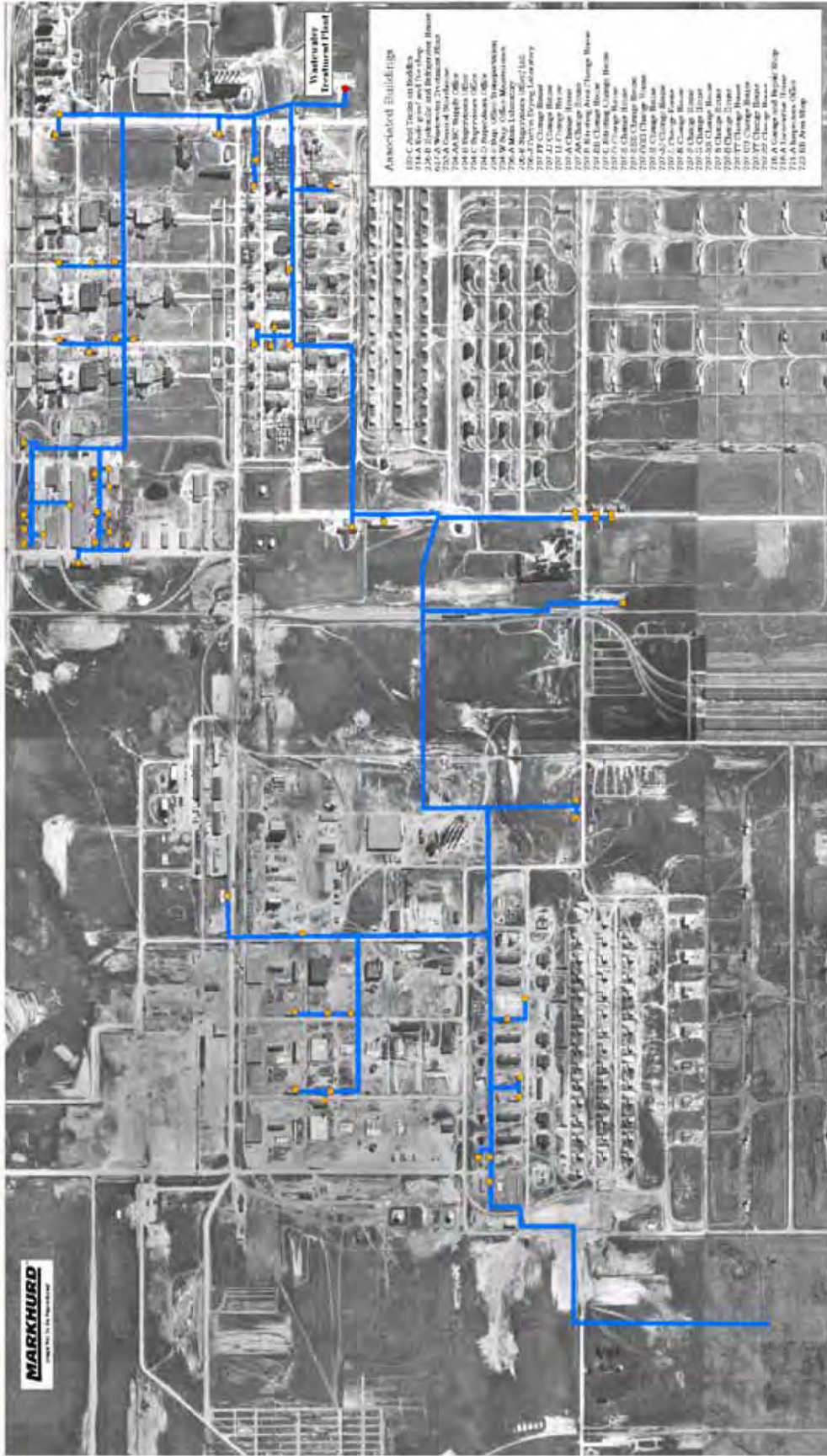
Information depicted on this map is derived from a
 Gopher Ordnance Works Real Estate Map dated
 1943 (revisions in 1944)

**SEGMENT "A"
 REAL ESTATE (CIRCA 1944)
 MAP 3
 FORMER GOPHER ORDNANCE WORKS
 ROSEMONT, MN**



Sanitary Sewer System

Gopher Ordnance Works

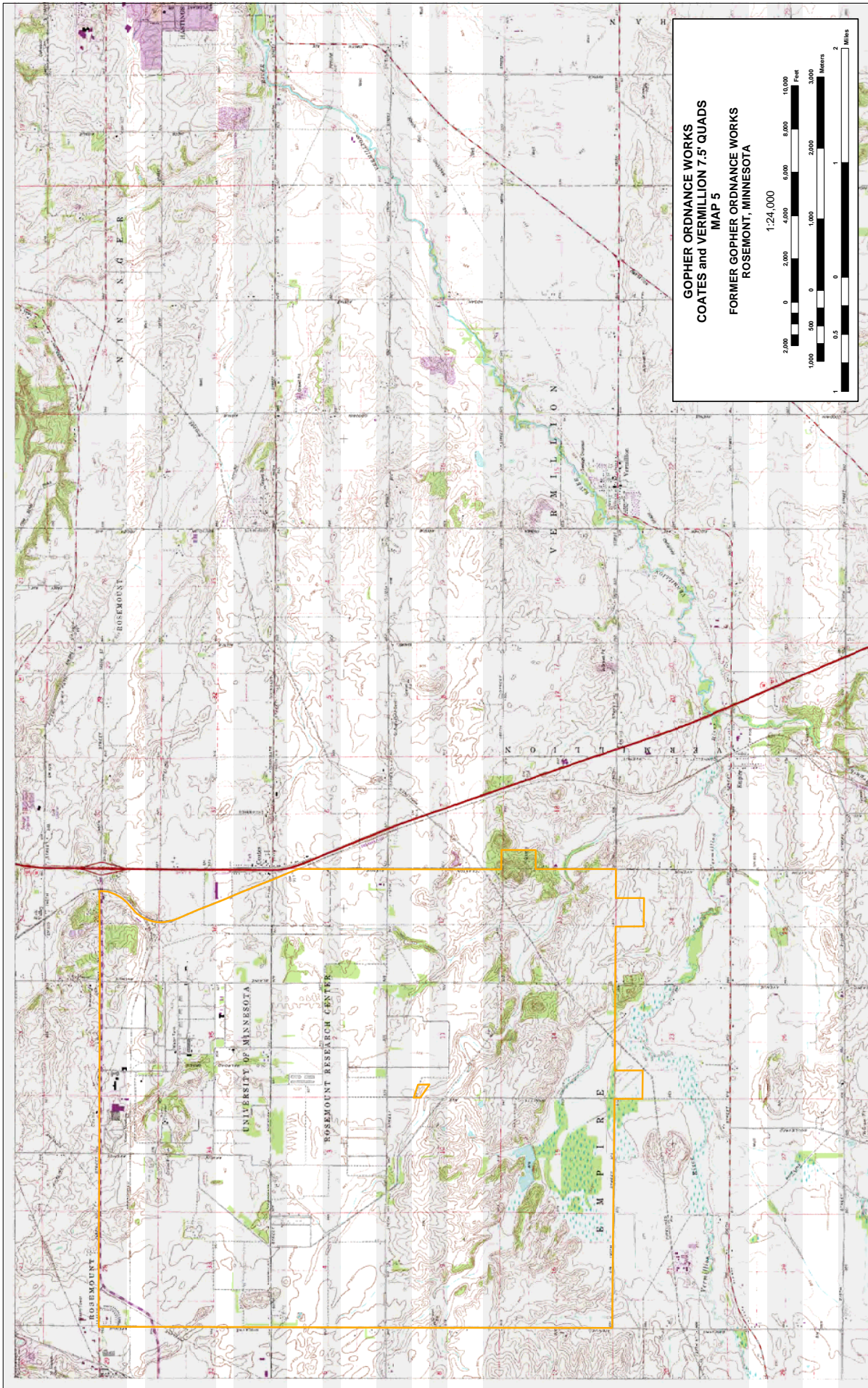


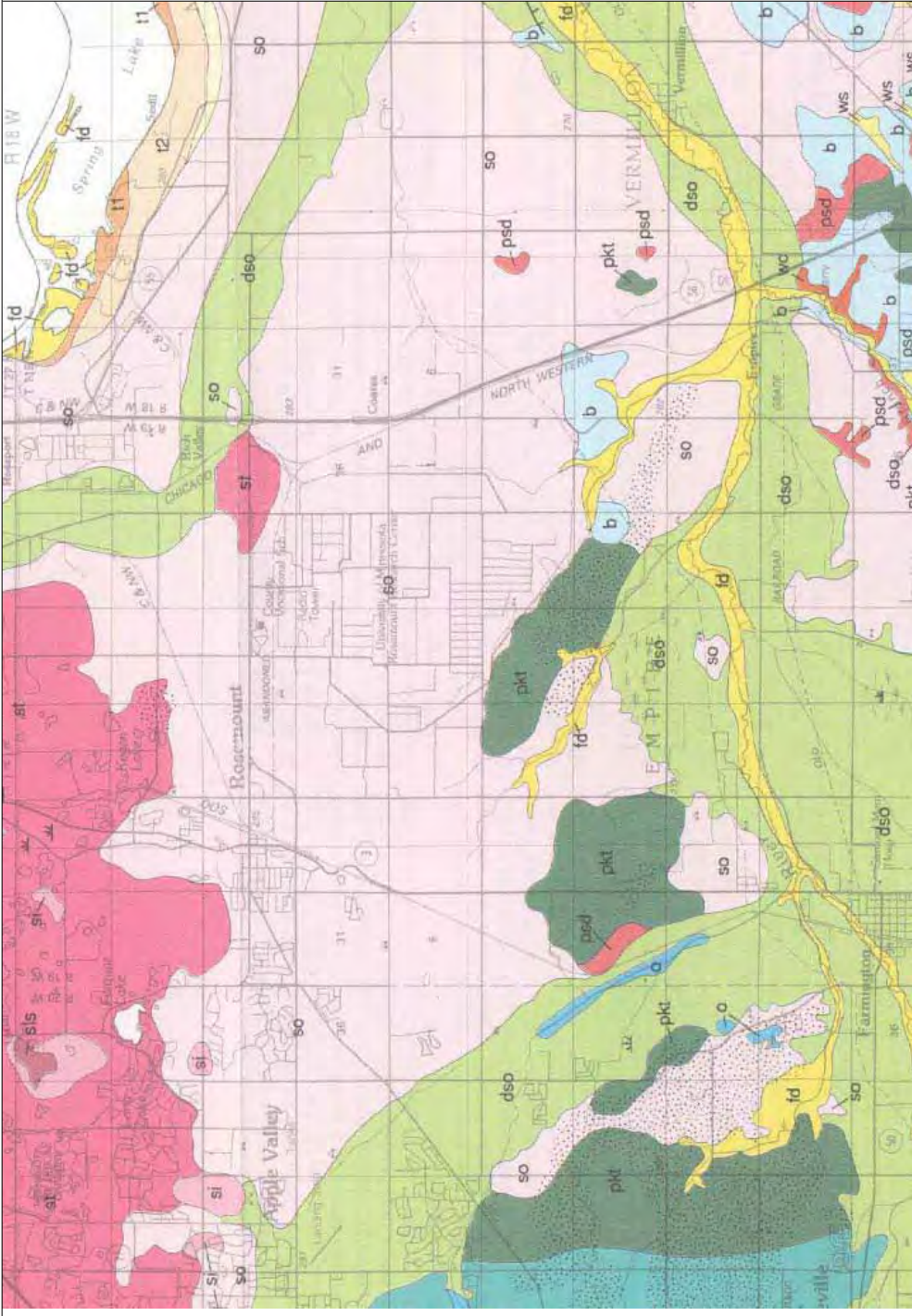
Associated Buildings

101 C Fuel Tank in Bldgs
111 A Solid gas and Oil Shop
111 B Hydraulic and Refrigeration House
111 C Utility Building
201 A General Storehouse
201 B Storage Office
201 C Reproduction Office
201 D Maintenance Office
201 E Storage Office
201 F Main Laboratory
201 G Superheaters and Labor Entry
201 H Change Room
201 I Change Room
201 J Change Room
201 K Change Room
201 L Change Room
201 M Change Room
201 N Change Room
201 O Change Room
201 P Change Room
201 Q Change Room
201 R Change Room
201 S Change Room
201 T Change Room
201 U Change Room
201 V Change Room
201 W Change Room
201 X Change Room
201 Y Change Room
201 Z Change Room
201 AA Change Room
201 AB Change Room
201 AC Change Room
201 AD Change Room
201 AE Change Room
201 AF Change Room
201 AG Change Room
201 AH Change Room
201 AI Change Room
201 AJ Change Room
201 AK Change Room
201 AL Change Room
201 AM Change Room
201 AN Change Room
201 AO Change Room
201 AP Change Room
201 AQ Change Room
201 AR Change Room
201 AS Change Room
201 AT Change Room
201 AU Change Room
201 AV Change Room
201 AW Change Room
201 AX Change Room
201 AY Change Room
201 AZ Change Room

**SANITARY SEWER SYSTEM
MAP 4
FORMER GOPHER ORDNANCE WORKS
ROSEMONT, MN**

Prepared by:
Mark Hurd
DATE: 06/15/2010





- NONGLACIAL DEPOSITS**
- ORGANIC DEPOSITS
- fd FLOODPLAIN ALLUVIUM
- wc COLLUVIUM

- DEPOSITS INDIRECTLY RELATED TO GLACIATION**
- (stippled) LOESS
- ws SLOPEWASH

- TERRACE DEPOSITS**
- 11 LOWER TERRACE
- 12 MIDDLE TERRACE
- 13 UPPER TERRACE

- DESMOINES LOBE DEPOSITS**
- dso MIXED OUTWASH

- SUPERIOR LOBE DEPOSITS (Cromwell Formation)**
- so OUTWASH
- si ICE-CONTACT STRATIFIED DEPOSITS
- st TILL
- sls GLACIAL LAKE SAND

- PRE-LATE WISCONSINAN DEPOSITS**
- psd DRIFT OF THE RIVER FALLS FORMATION
- pkt "OLD GRAY" TILL
- b BEDROCK

SURFICIAL GEOLOGY
MAP 6
 Former Gopher Ordnance Works
 Rosemount, MN



BEDROCK UNITS (bedrock map)

Opg PLATTVILLE and GLENWOOD FORMATIONS

Osp ST PETER SANDSTONE

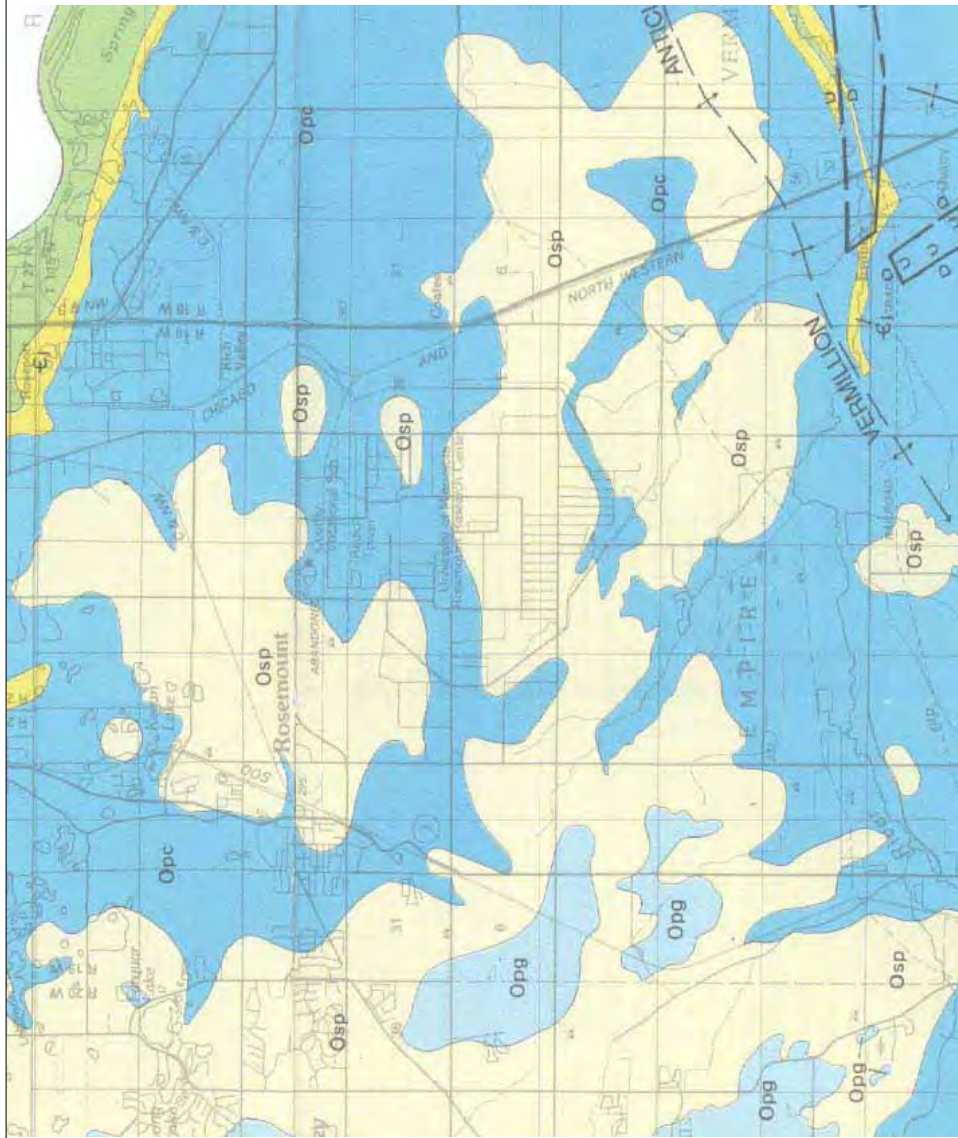
Opc PRAIRIE DU CHIEN GROUP

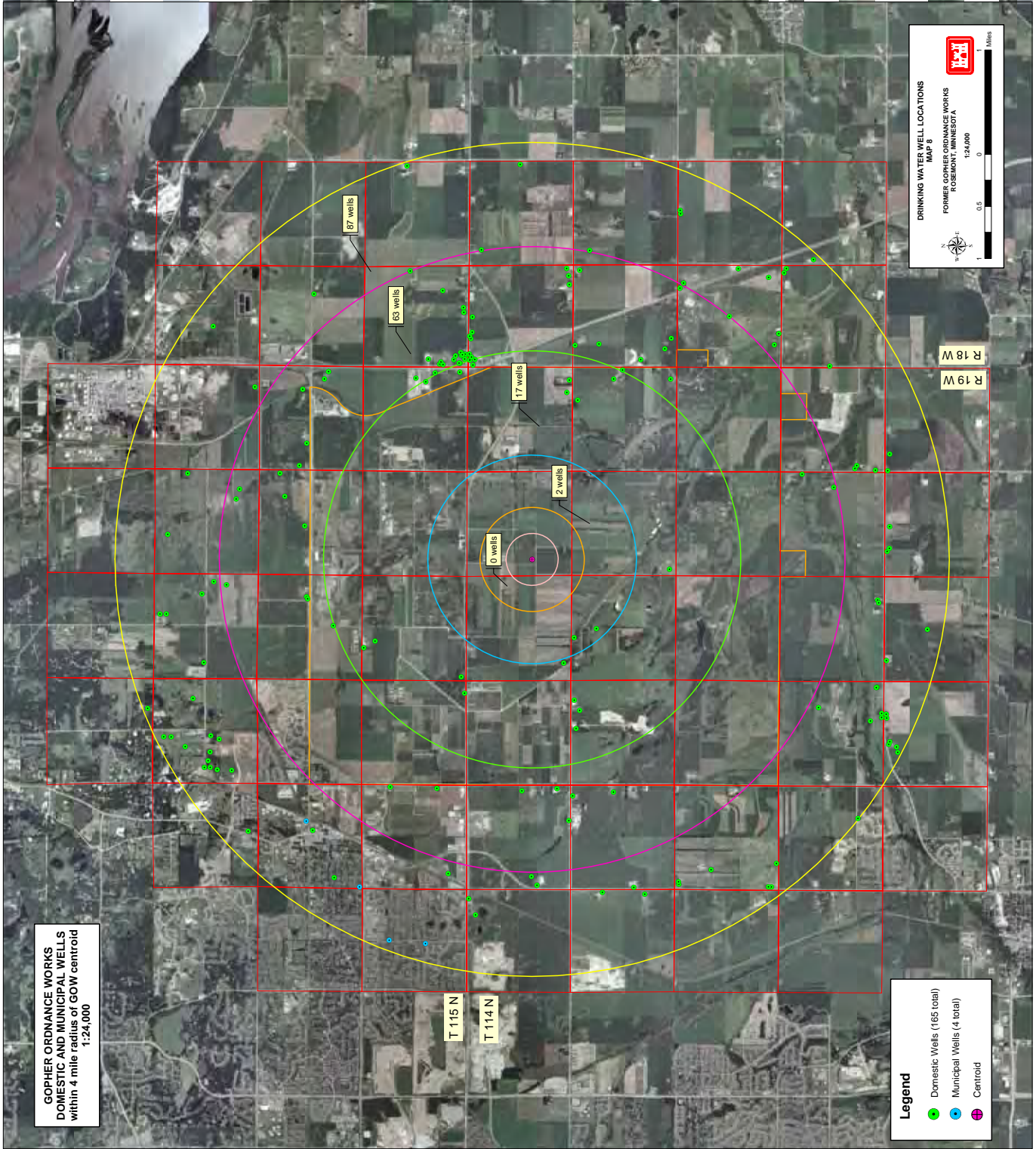
⊞ JORDAN SANDSTONE

BEDROCK GEOLOGY
MAP 7

Former Gopher Ordnance Works
Rosemount, MN

0 1/2 1 2 3





GOPHER ORDINANCE WORKS
DOMESTIC AND MUNICIPAL WELLS
within 4 mile radius of GOW centroid
1:24,000

- Legend**
- Domestic Wells (165 total)
 - Municipal Wells (4 total)
 - Centroid

DRINKING WATER WELL LOCATIONS
MAP 8
FORMER GOPHER ORDINANCE WORKS
ROSEMONT, MINNESOTA
1:24,000



T 115 N
T 114 N

R 18 W
R 19 W

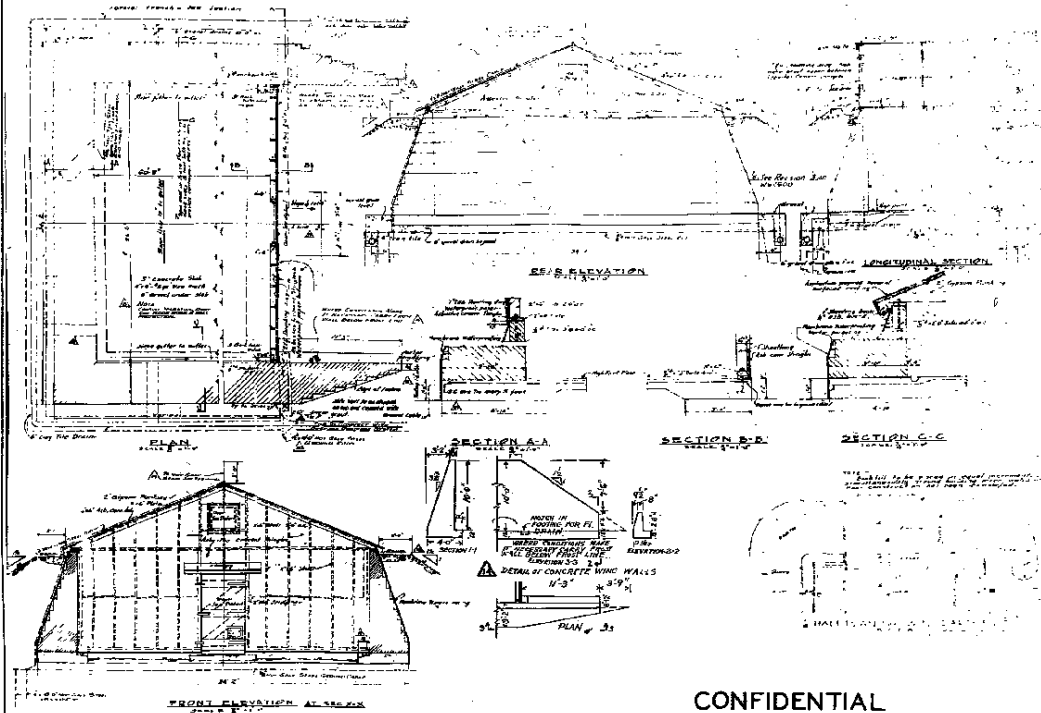
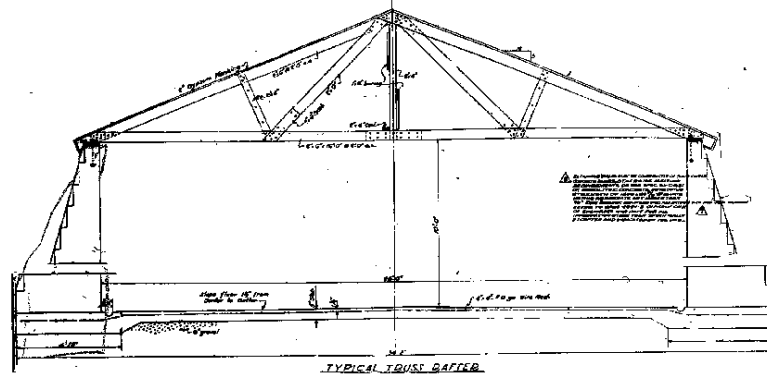
87 wells

63 wells

17 wells

2 wells

0 wells



CONFIDENTIAL

GOPHER ORDNANCE WORKS
ROSEMOUNT MINNESOTA

BUILDING PLANS
PART I SECTION 8
BLDG. NO. 260

PREPARED IN U.S. ENGINEER OFFICE

OMAHA, NEBRASKA

296

**BUILDING 260 (DNT IGLOO)
DRAWING 2
FORMER GOPHER ORDNANCE WORKS
ROSEMONT, MN**