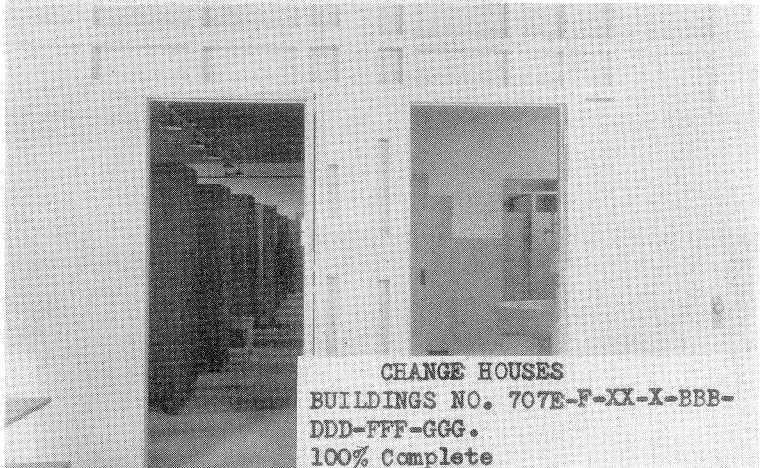
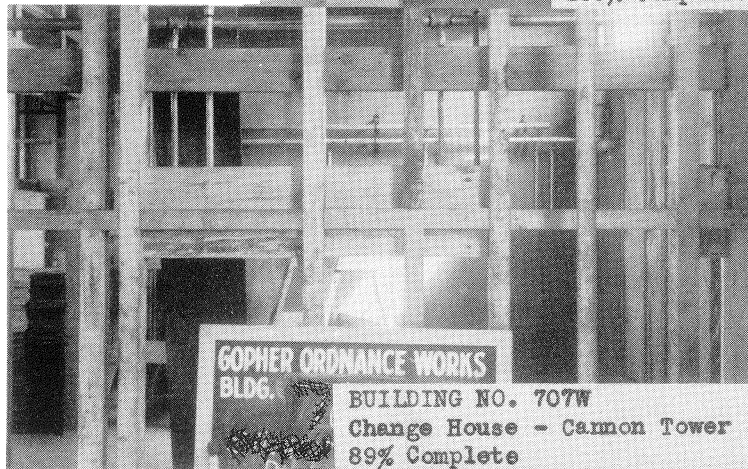


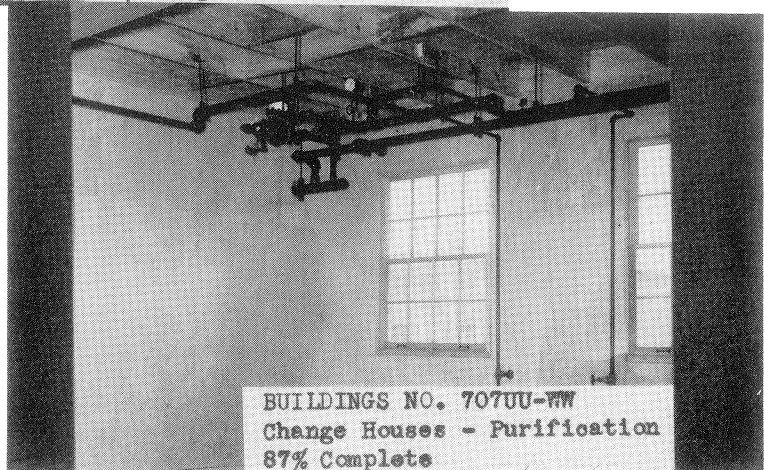
CHANGE HOUSES
 BUILDINGS NO. 707E-F-UU-WW(Purification),
 W(Cannon Towers), X-XX(Rifle Towers),
 BBB(Water Dry), DDD-EEE(Solvents), FFF
 (Transp.), GGG(Yard Master).
 Nos. 707-E-F-X-XX-BBB-DDD-FFF-GGG-100%,
 W-89%, EEE-91% Complete



CHANGE HOUSES
 BUILDINGS NO. 707E-F-XX-X-BBB-
 DDD-FFF-GGG.
 100% Complete



GOPHER ORDNANCE WORKS
 BLDG. BUILDING NO. 707W
 Change House - Cannon Tower
 89% Complete



BUILDINGS NO. 707UU-WW
 Change Houses - Purification
 87% Complete