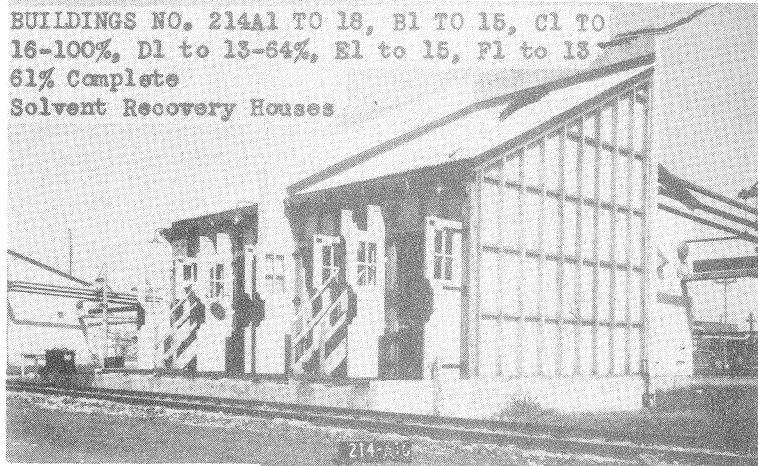
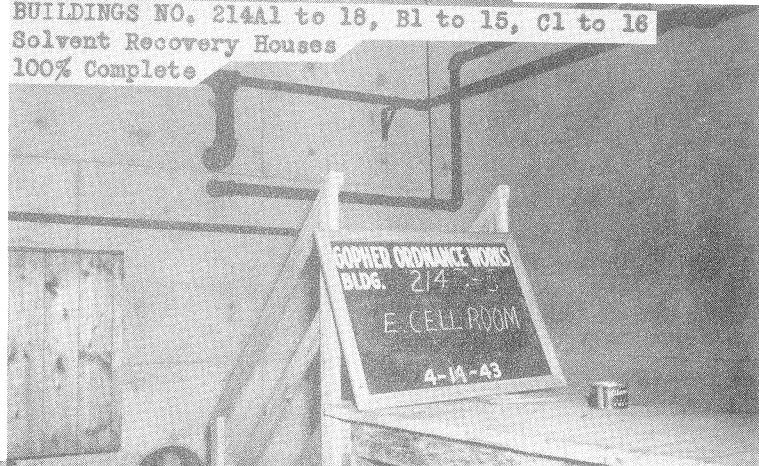


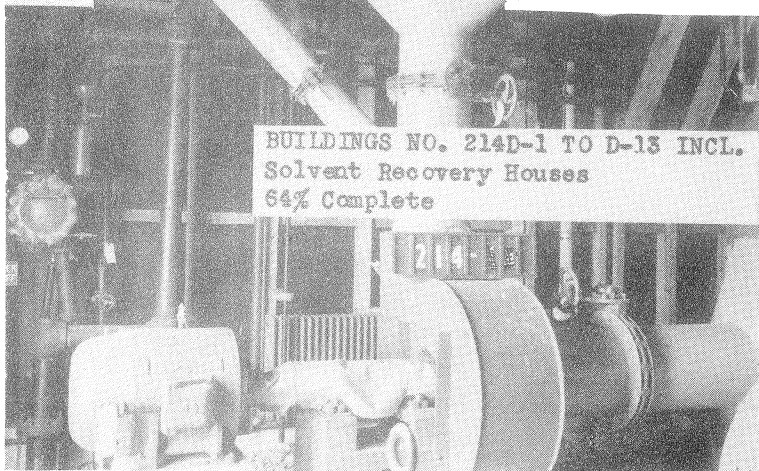
BUILDINGS NO. 214A1 TO 18, B1 TO 15, C1 TO 16-100%, D1 to 13-64%, E1 to 15, F1 to 13  
61% Complete  
Solvent Recovery Houses



BUILDINGS NO. 214A1 to 18, B1 to 15, C1 to 16  
Solvent Recovery Houses  
100% Complete



BUILDINGS NO. 214D-1 TO D-13 INCL.  
Solvent Recovery Houses  
64% Complete



BUILDINGS NO. 214D-1 TO D-13 INCL.  
Solvent Recovery Houses  
64% Complete