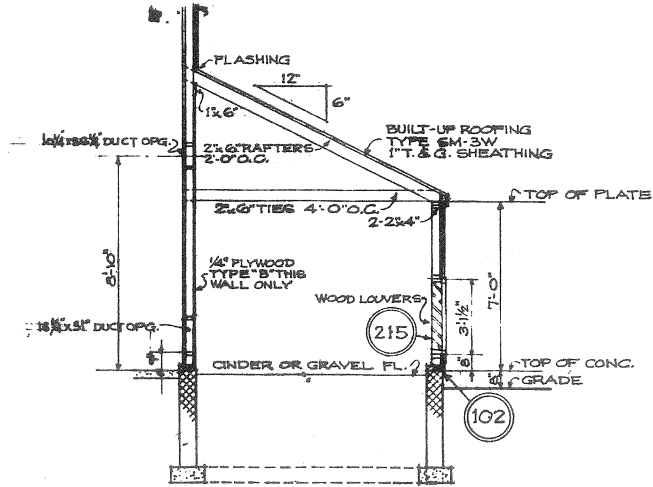
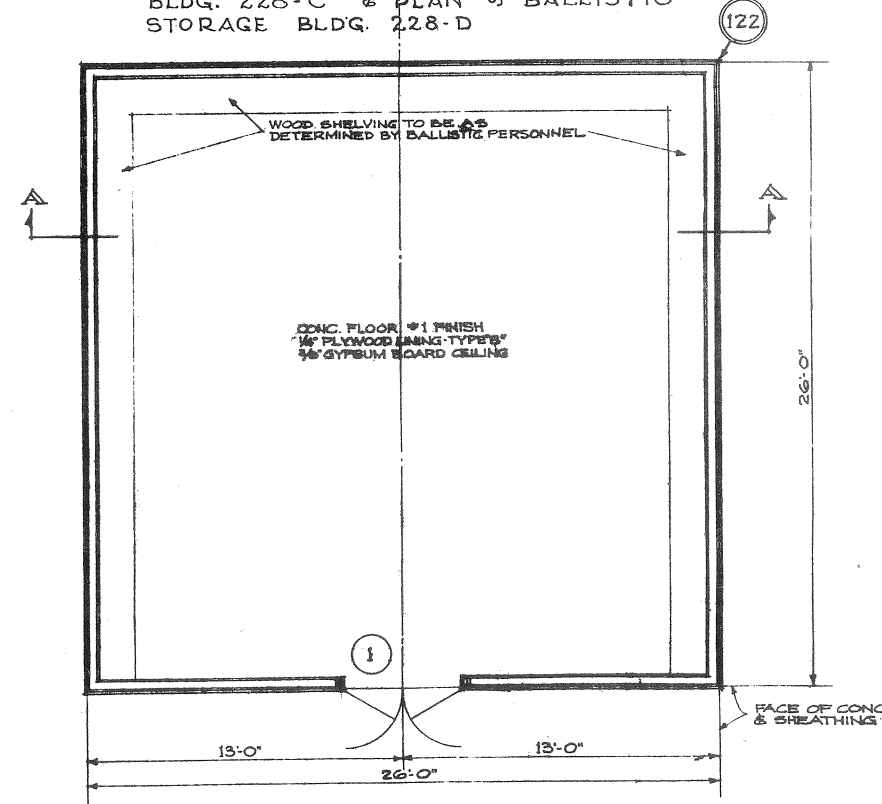


SECTION A-A  
1/4" = 1'-0"



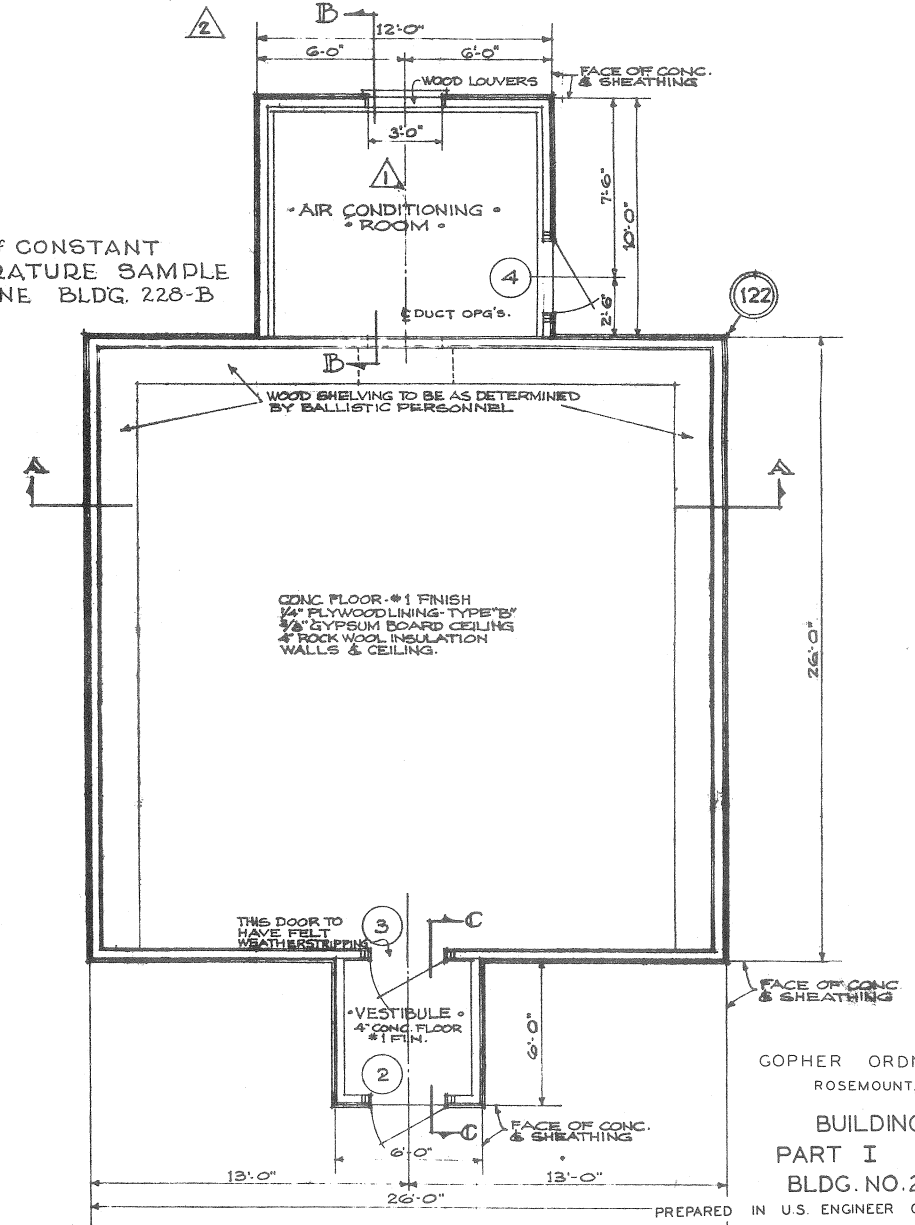
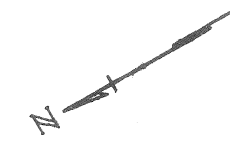
SECTION B-B  
1/4" = 1'-0"

PLAN of ATMOSPHERIC POWDER MAGAZINE BLDG. 228-C & PLAN of BALLISTIC STORAGE BLDG. 228-D



PLAN of CONSTANT TEMPERATURE SAMPLE MAGAZINE BLDG. 228-B

NOTE  
BRACE ALL CORNERS WITH 2x4 BRACING.



GOPHER ORDNANCE WORKS  
ROSEMOUNT, MINNESOTA  
BUILDING PLANS  
PART I SECTION 8  
BLDG. NO. 228 B-C & D  
PREPARED IN U.S. ENGINEER OFFICE OMAHA, NEBRASKA