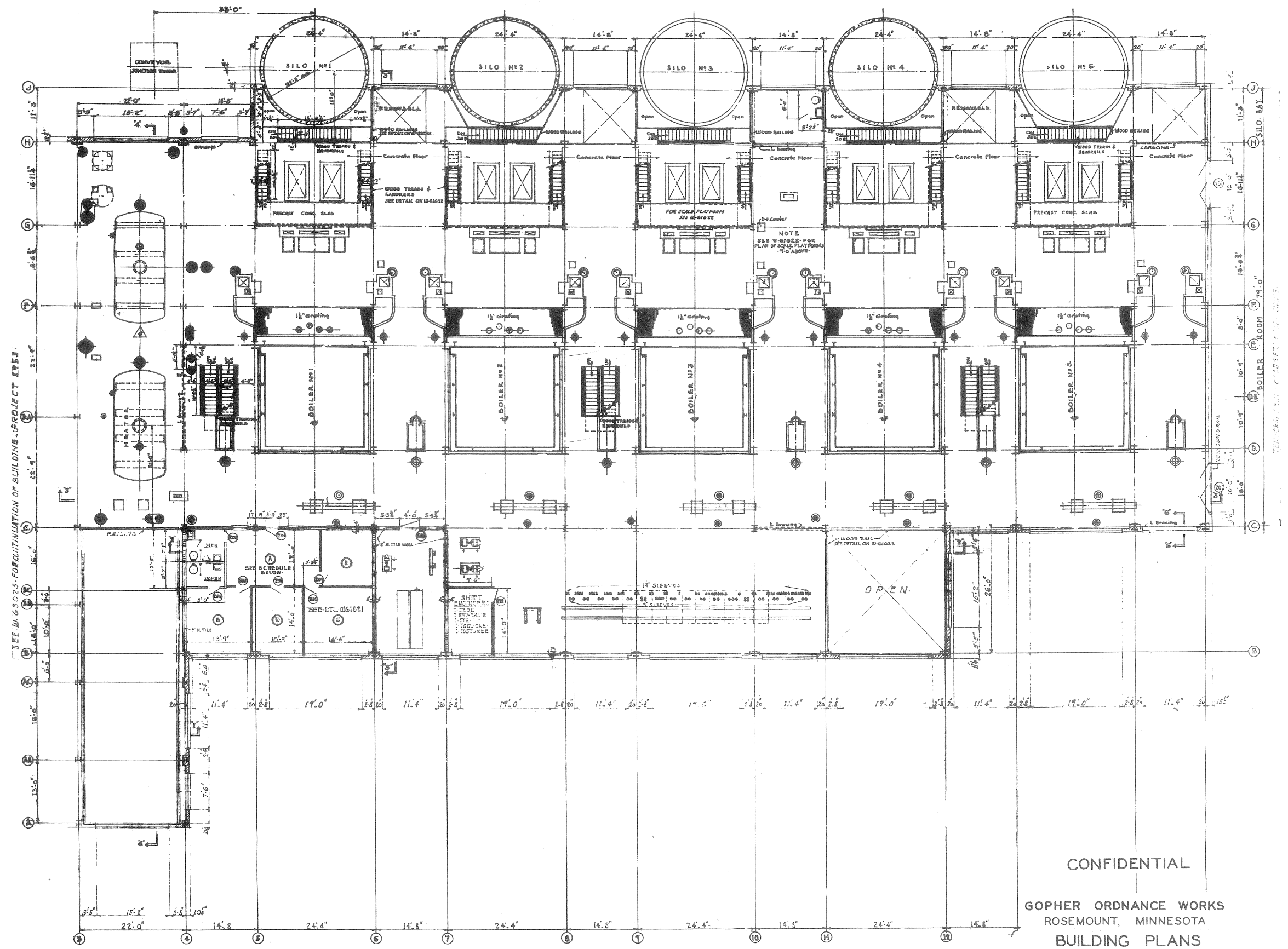


CONFIDENTIAL

GOPHER ORDNANCE WORKS
 ROSEMOUNT, MINNESOTA
 BUILDING PLANS
 PART I SECTION 8
 BLDG. NO. 401A

PREPARED IN U.S. ENGINEER OFFICE OMAHA, NEBRASKA

TEMPORARY P.W. CORRUGATED SIDING - WOOD GIETS



SEE W-63025-FOR CONTINUATION OF BUILDING - PROJECT EYES.

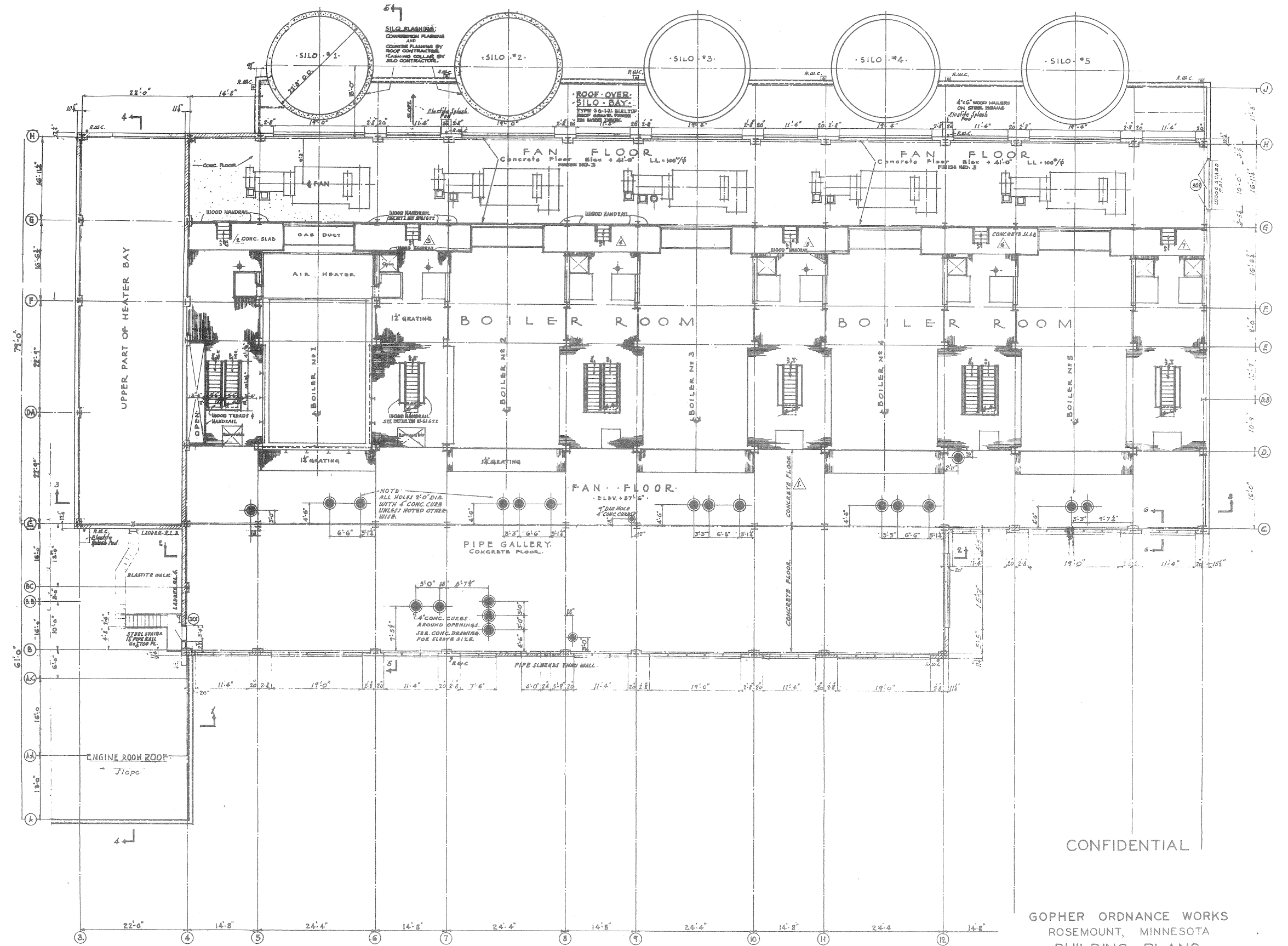
NOTE
SEE W-63025 FOR
PLAN OF SCALE PLATFORMS
4'-0" ABOVE

OPEN

CONFIDENTIAL

GOPHER ORDNANCE WORKS
ROSEMOUNT, MINNESOTA
BUILDING PLANS
PART I SECTION 8
BLDG. NO. 401A

PREPARED IN U.S. ENGINEER OFFICE OMAHA, NEBRASKA



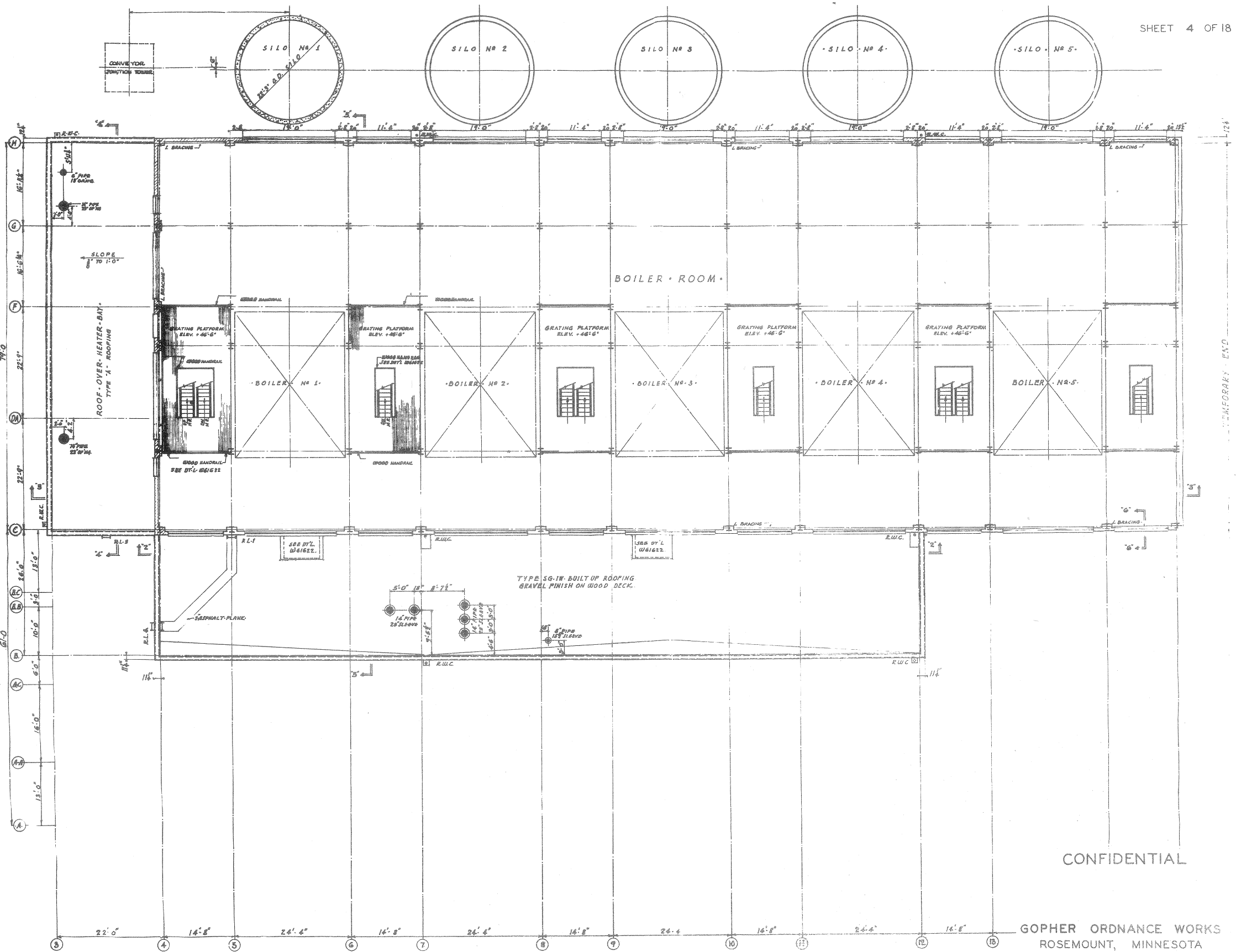
CONFIDENTIAL

GOPHER ORDNANCE WORKS
 ROSEMOUNT, MINNESOTA
 BUILDING PLANS
 PART I SECTION 8
 BLDG. NO. 401A

PREPARED IN U.S. ENGINEER OFFICE OMAHA, NEBRASKA



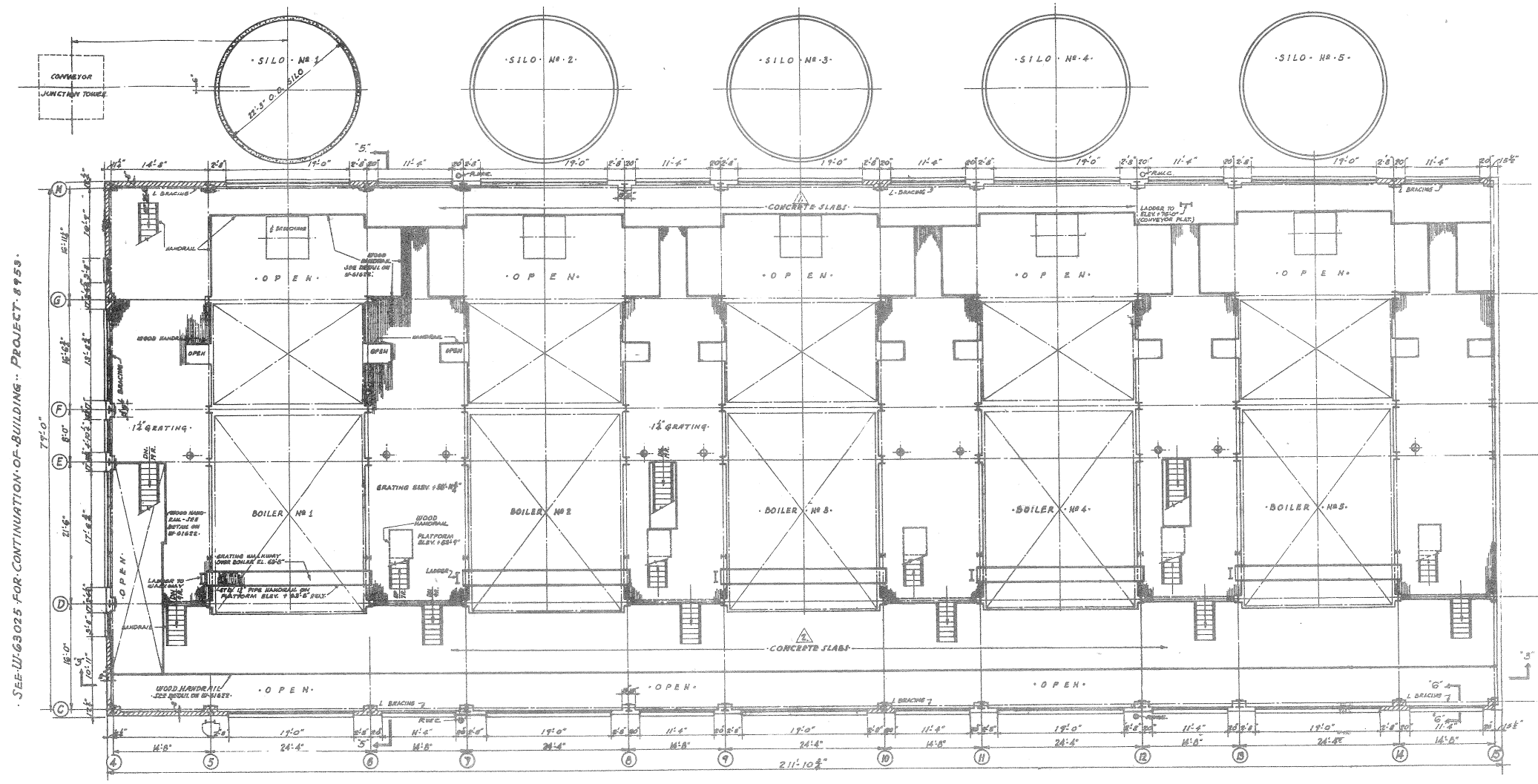
SEE W-63025 FOR CONTINUATION OF BLDG PROJECT 8753.



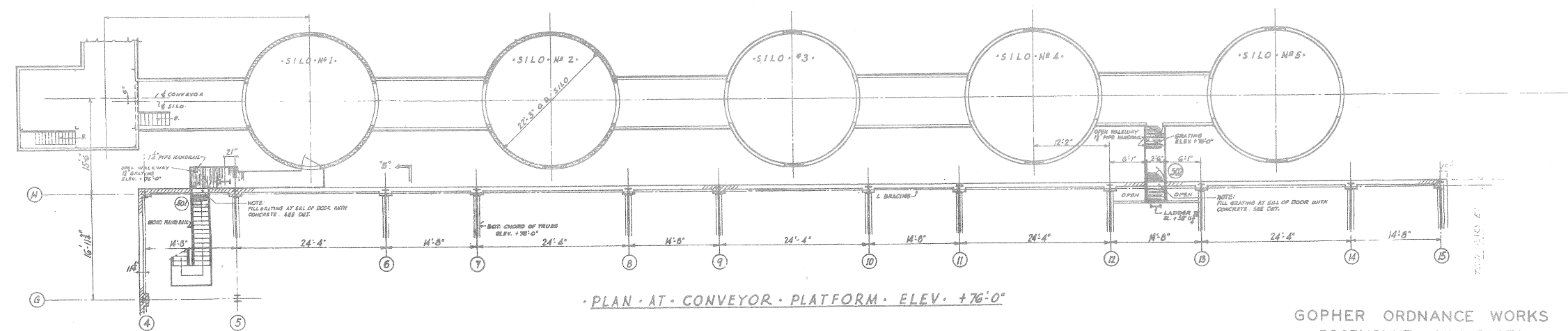
CONFIDENTIAL

GOPHER ORDNANCE WORKS
 ROSEMOUNT, MINNESOTA
 BUILDING PLANS
 PART I SECTION 8

BLDG. NO. 401A
 PREPARED IN U.S. ENGINEER OFFICE OMAHA, NEBRASKA



PLAN AT TOP PLATFORM ELEV. +58'-11 1/2"



PLAN AT CONVEYOR PLATFORM ELEV. +76'-0"

SEE W-63025 FOR CONTINUATION OF BUILDING - PROJECT 8929.

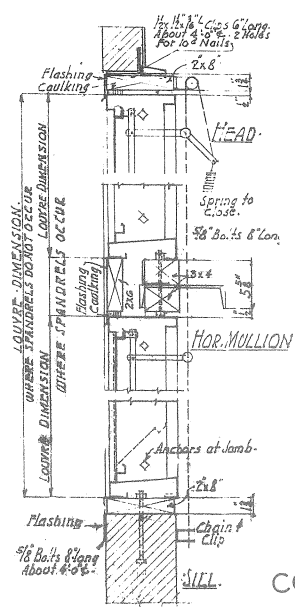
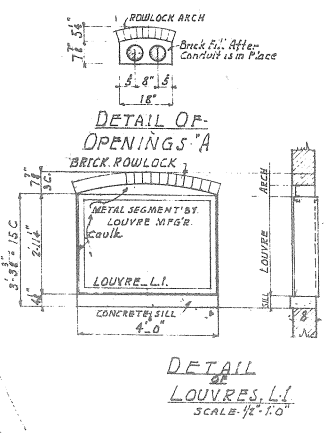
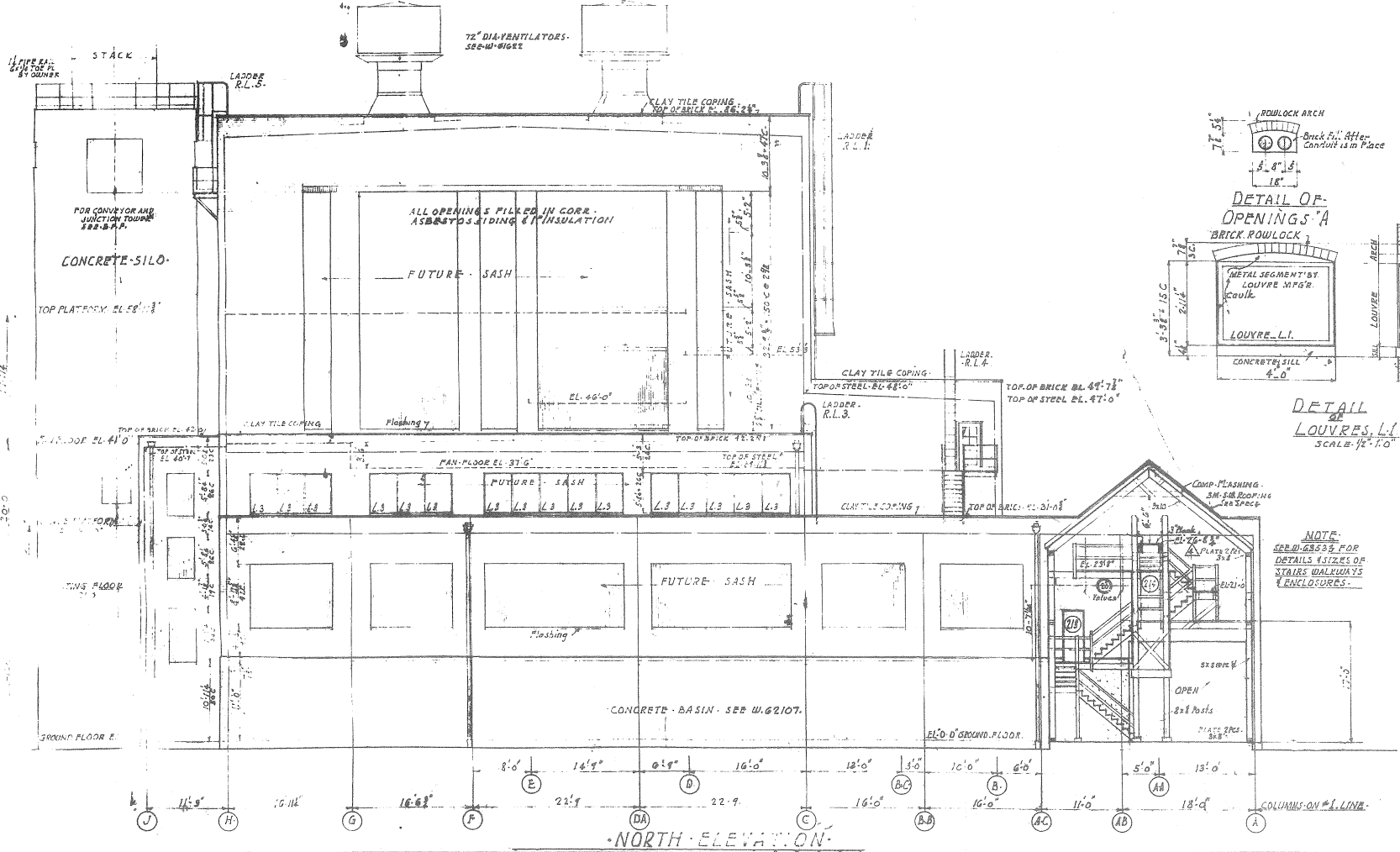
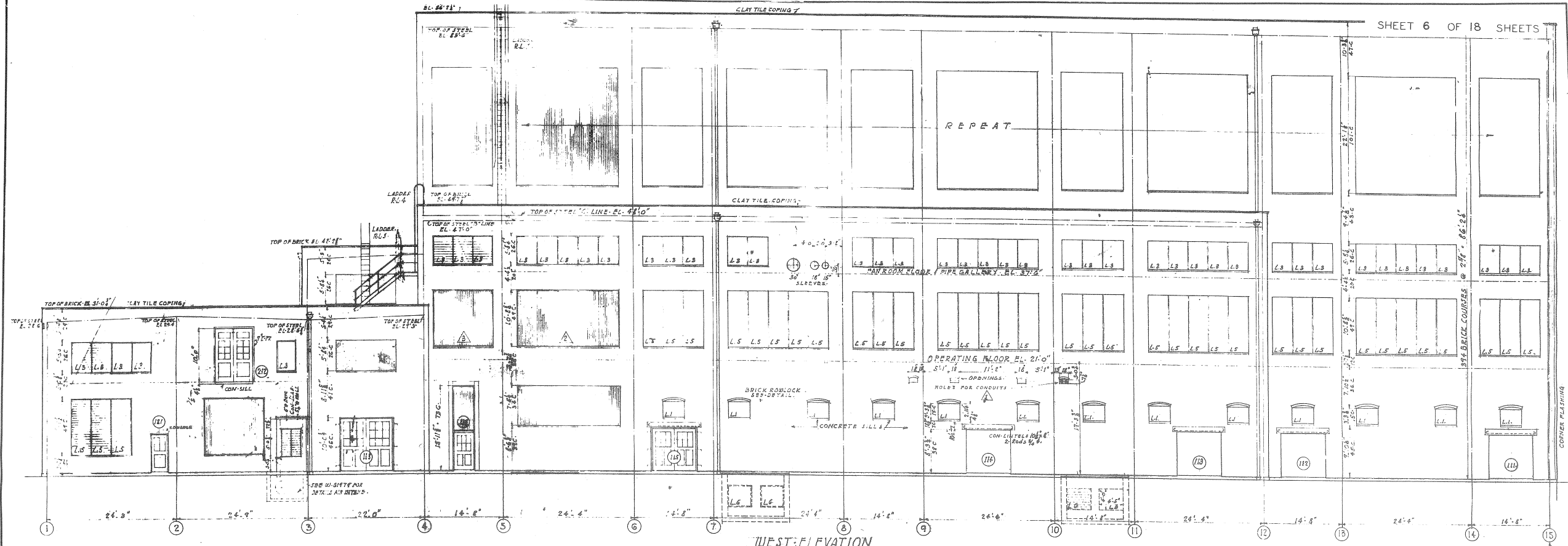
SEE W-63025 FOR CONTINUATION OF BUILDING - PROJECT 8929.



CONFIDENTIAL

GOPHER ORDNANCE WORKS
ROSEMOUNT, MINNESOTA
BUILDING PLANS
PART I SECTION 8

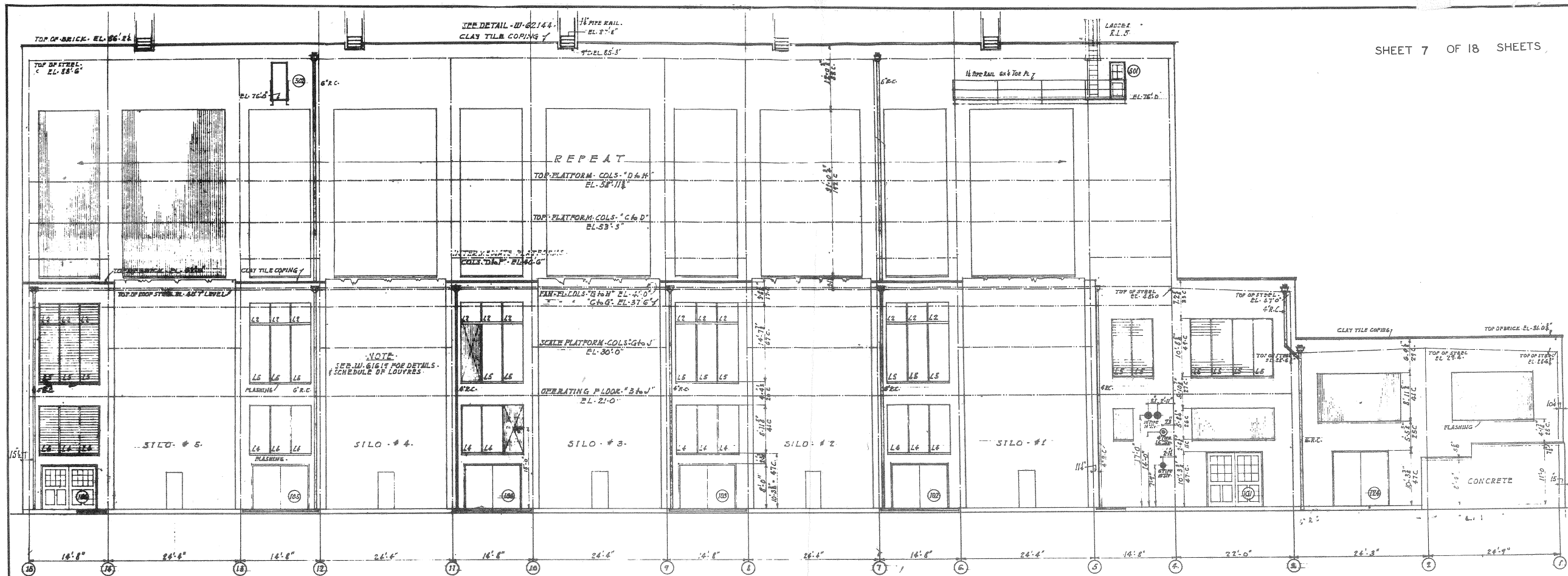
BLDG. NO. 401A
PREPARED IN U.S. ENGINEER OFFICE
OMAHA, NEBRASKA



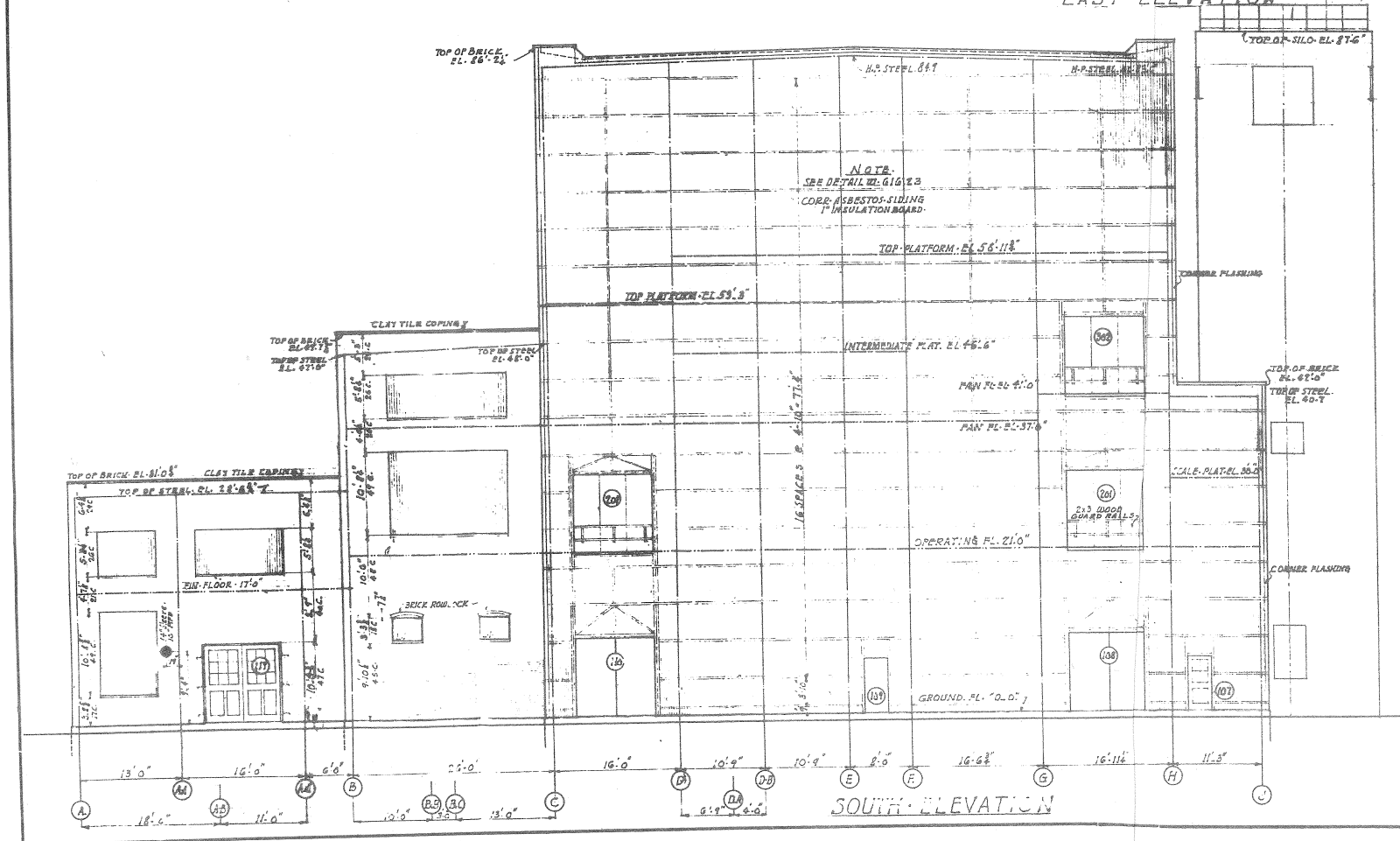
NOTE:
SEE W.G. 2107 FOR
DETAILS & SIZES OF
STAIRS WALKWAYS
& ENCLOSURES.

CONFIDENTIAL

GOPHER ORDNANCE WORKS
ROSEMOUNT, MINNESOTA
BUILDING PLANS
PART I SECTION 8
BLDG. NO. 401A
PREPARED IN U.S. ENGINEER OFFICE OMAHA, NEBRASKA



EAST ELEVATION

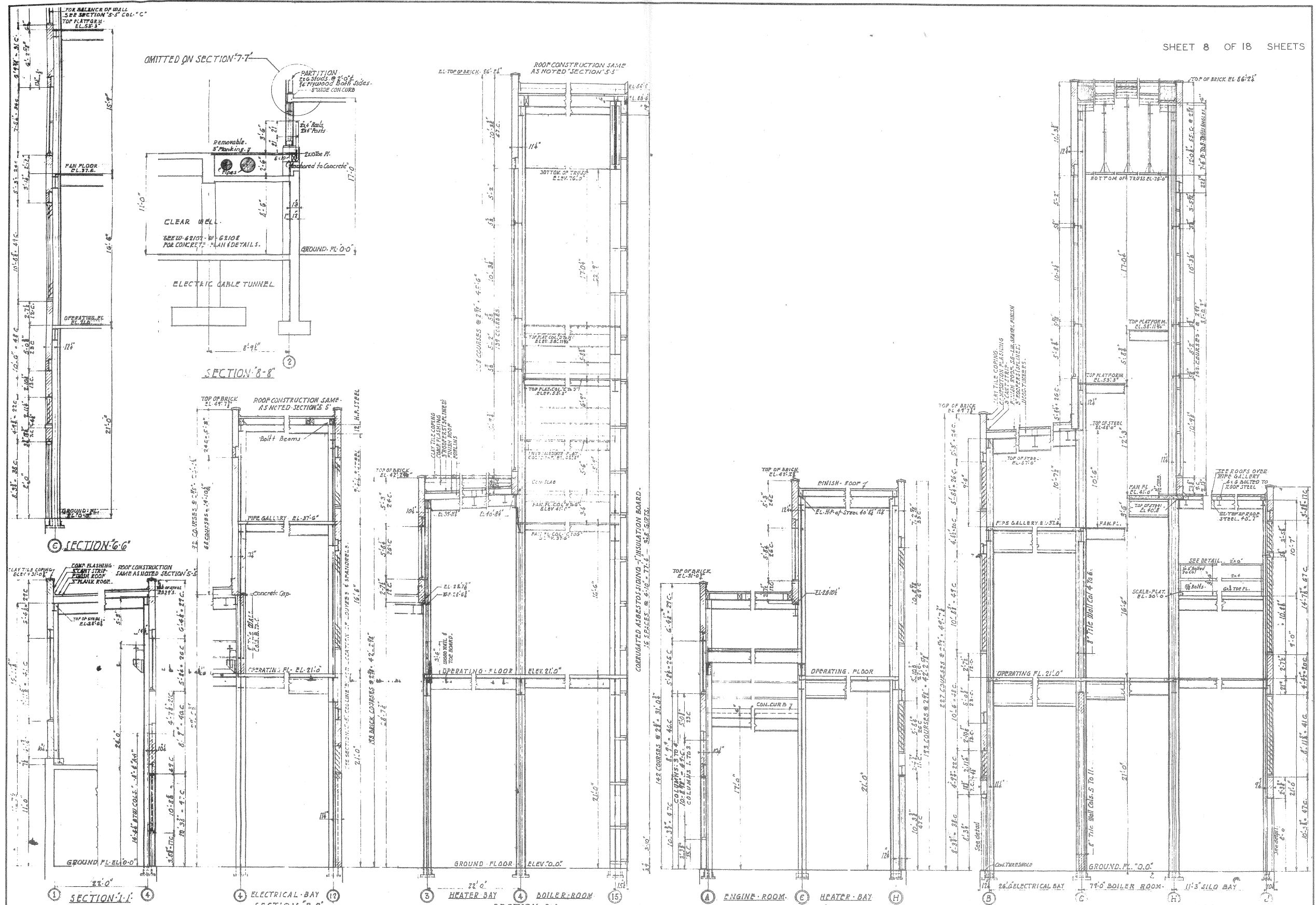


SOUTH ELEVATION

CONFIDENTIAL

GOPHER ORDNANCE WORKS
ROSEMOUNT, MINNESOTA
BUILDING PLANS
PART I SECTION 8

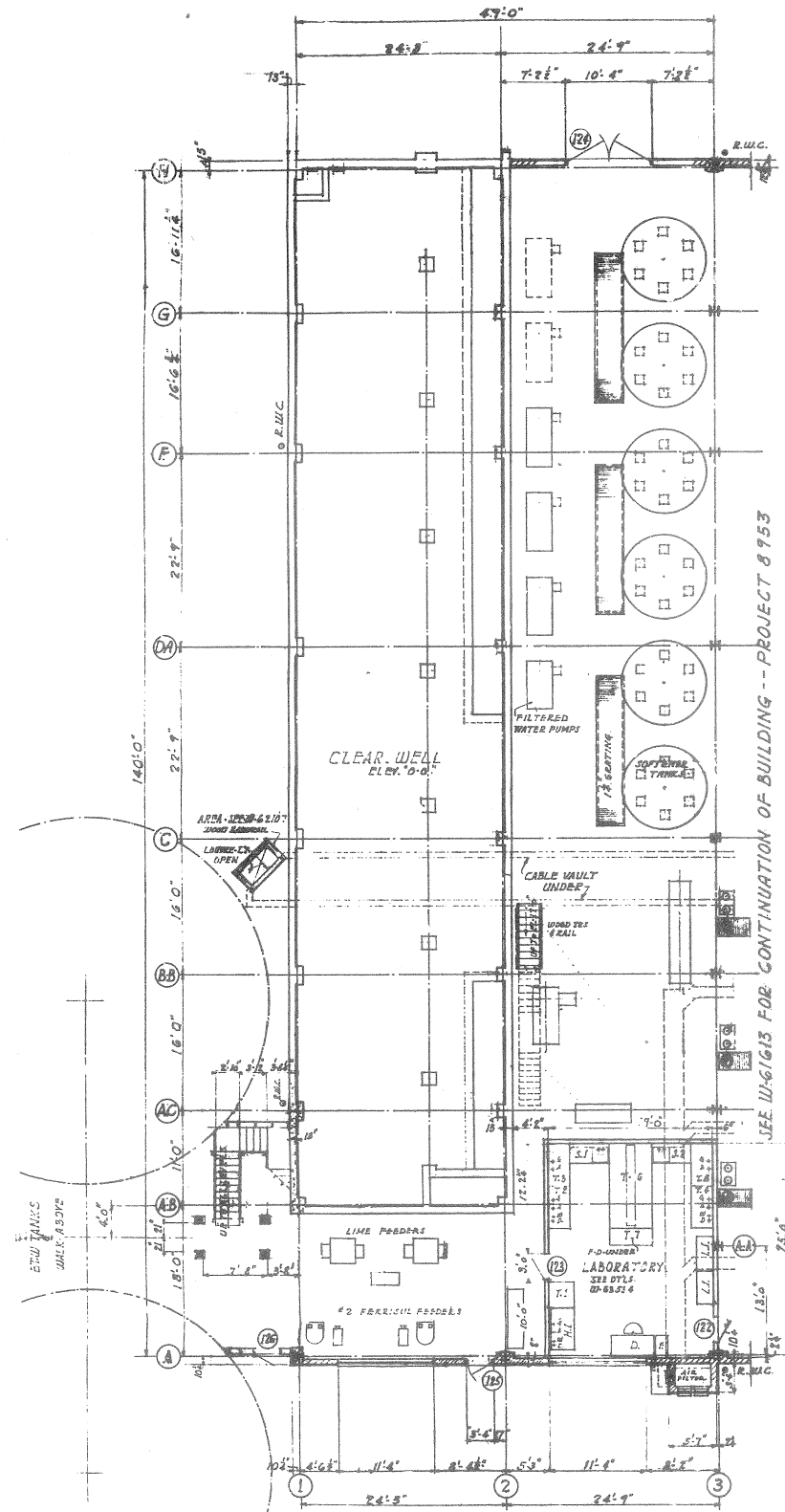
BLDG. NO. 401A
PREPARED IN U.S. ENGINEER OFFICE, OMAHA, NEBRASKA



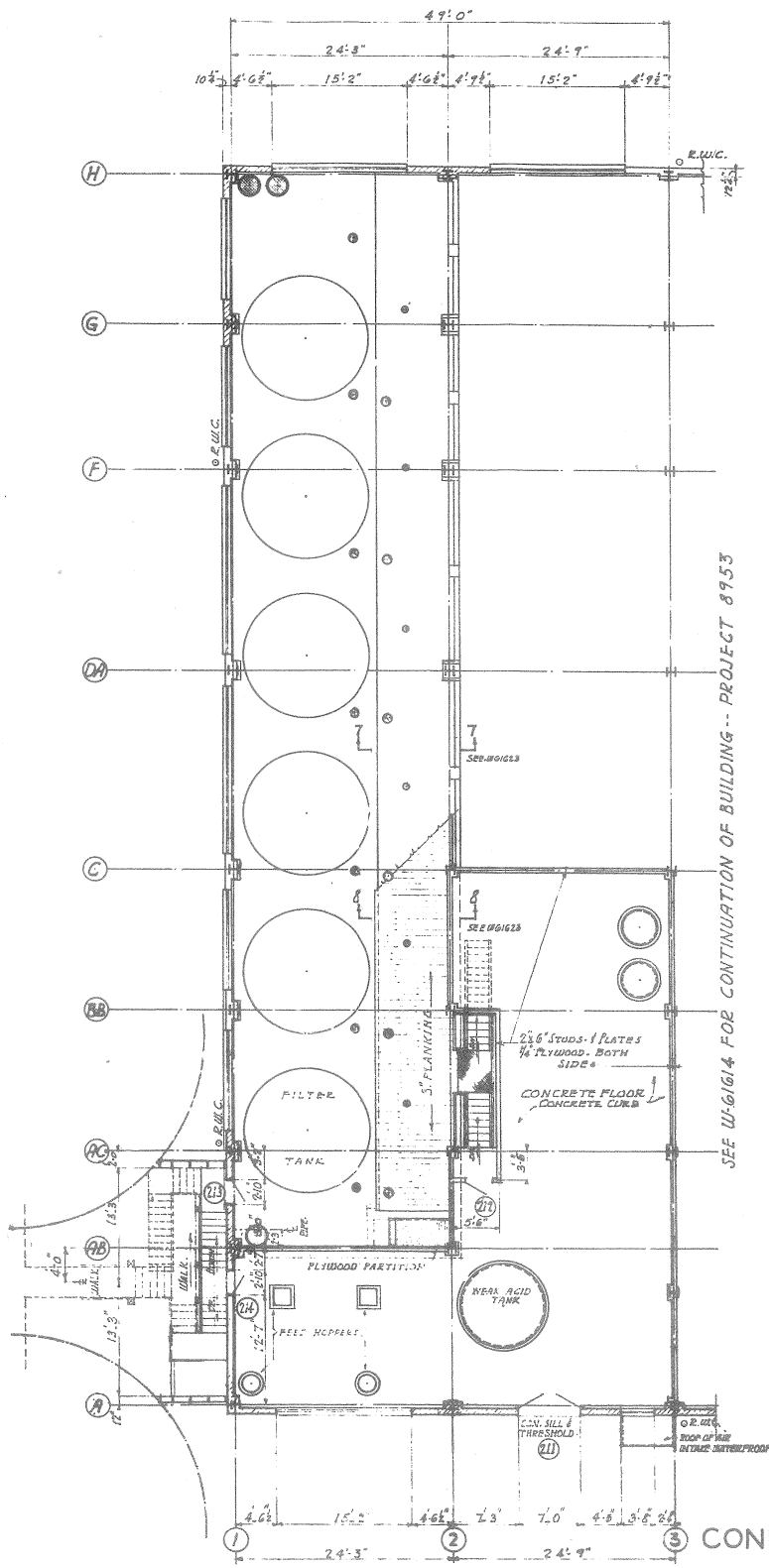
CONFIDENTIAL

GOPHER ORDNANCE WORKS
 ROSEMOUNT, MINNESOTA
 BUILDING PLANS
 PART I SECTION 8
 BLDG. NO. 401A

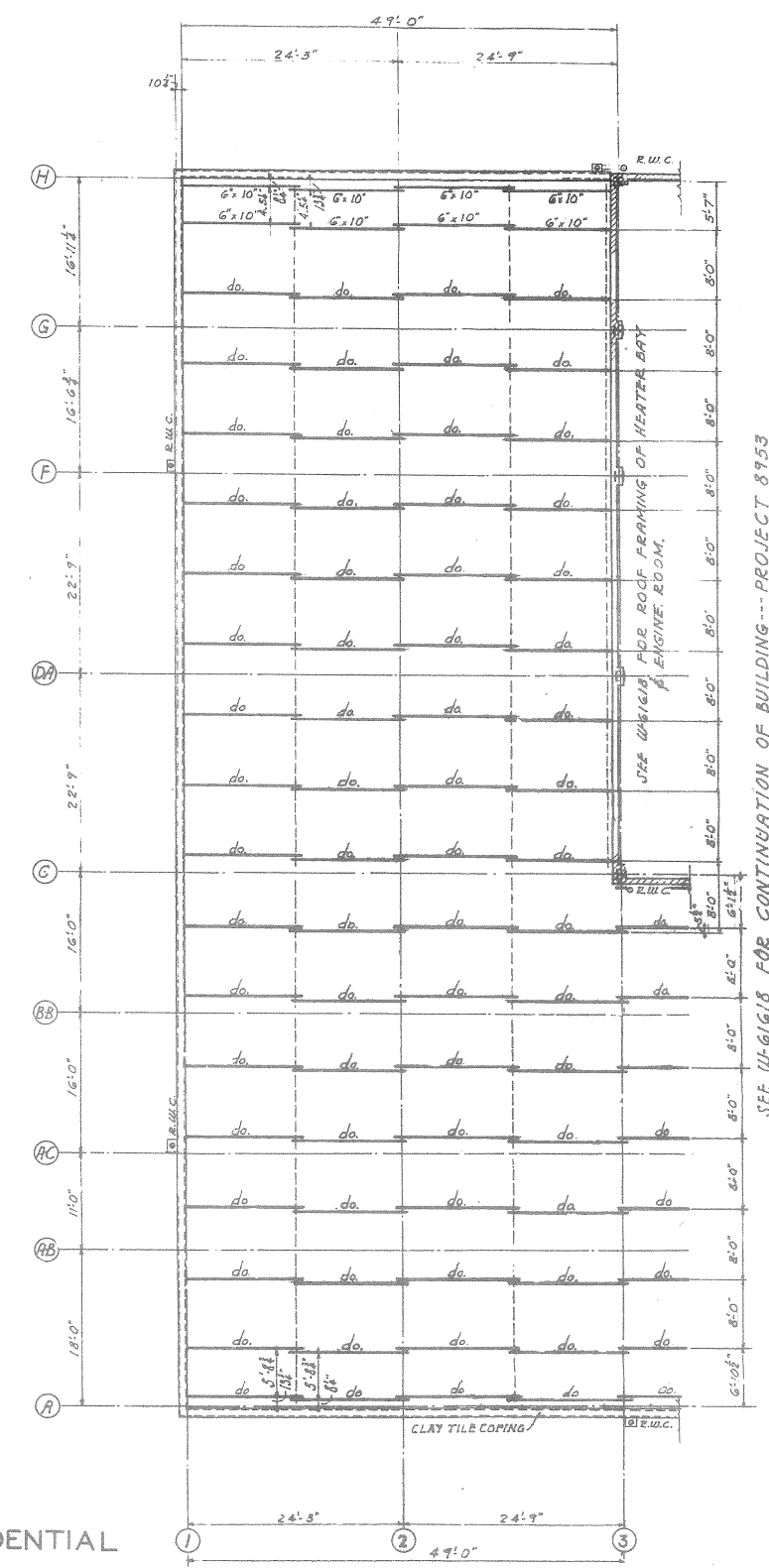
PREPARED IN U.S. ENGINEER OFFICE OMAHA, NEBRASKA



FIRST FLOOR PLAN



SECOND FLOOR PLAN



ROOF FRAMING PLAN



CONFIDENTIAL

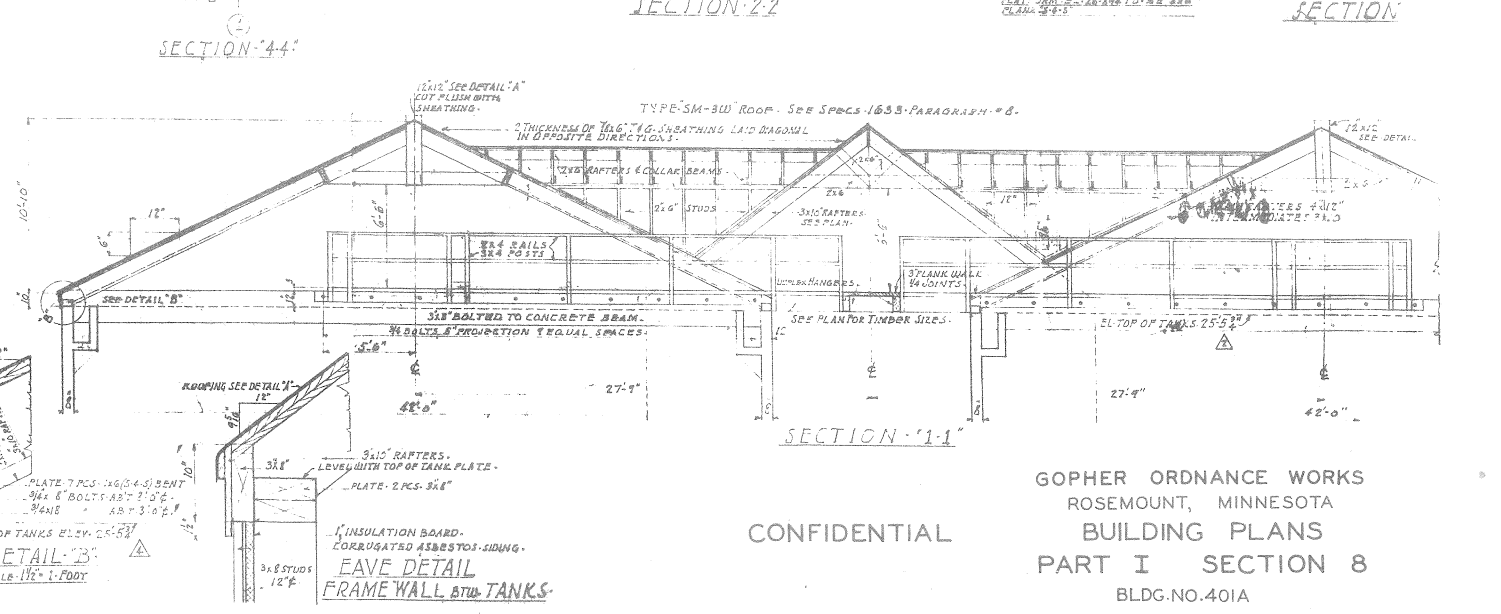
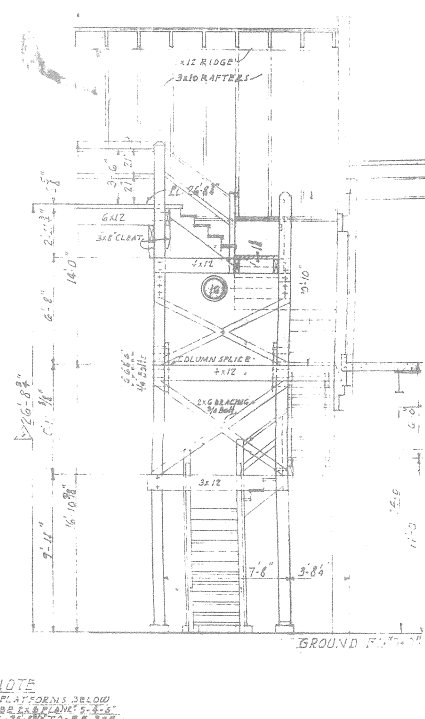
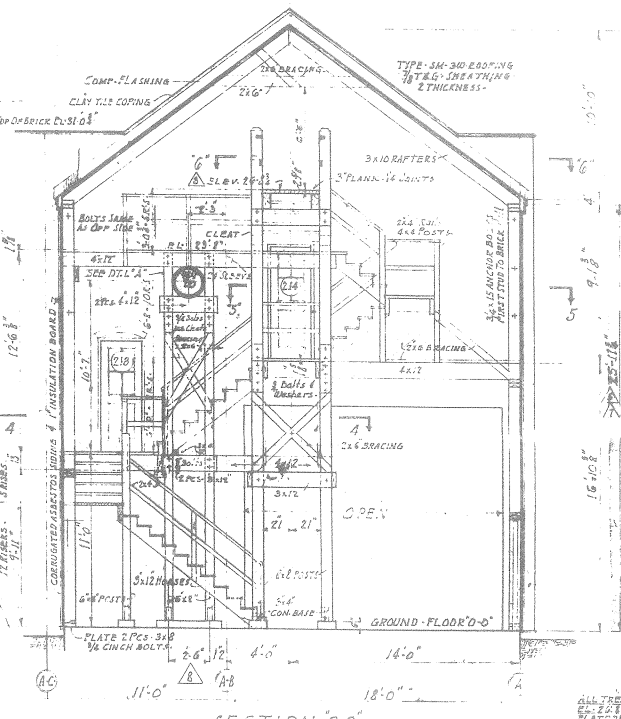
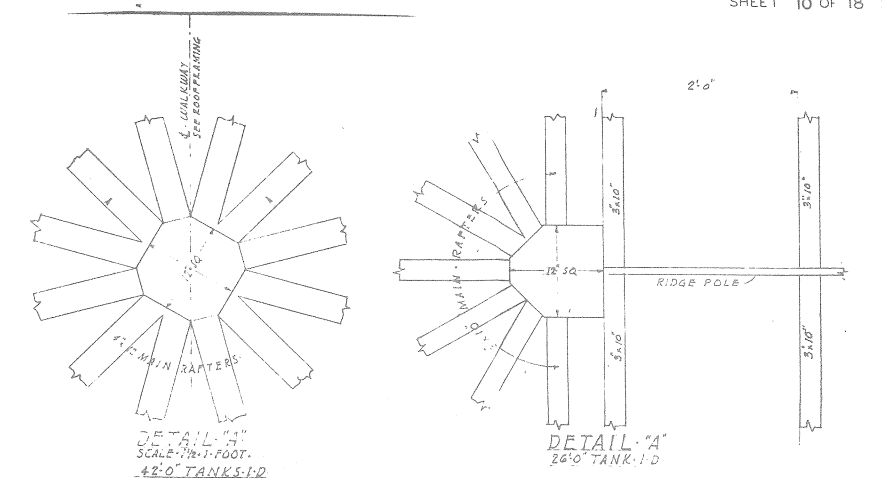
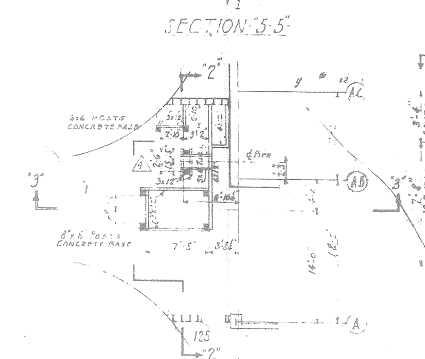
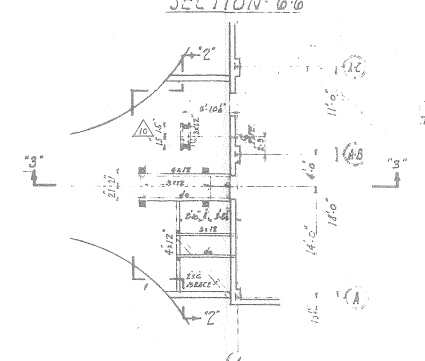
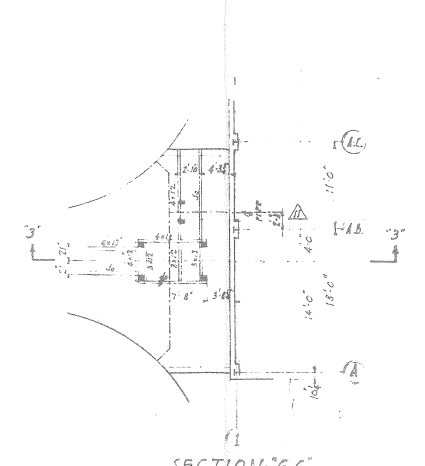
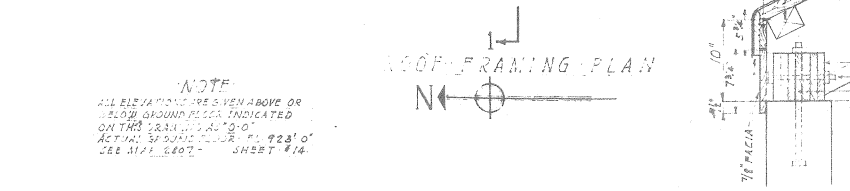
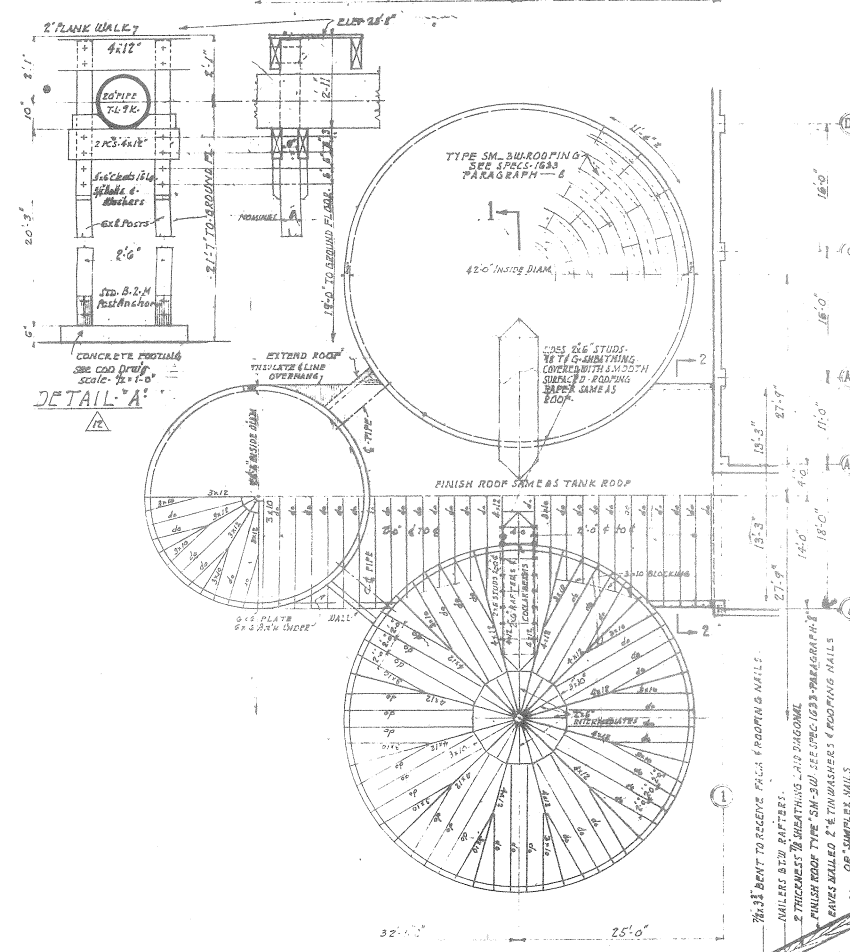
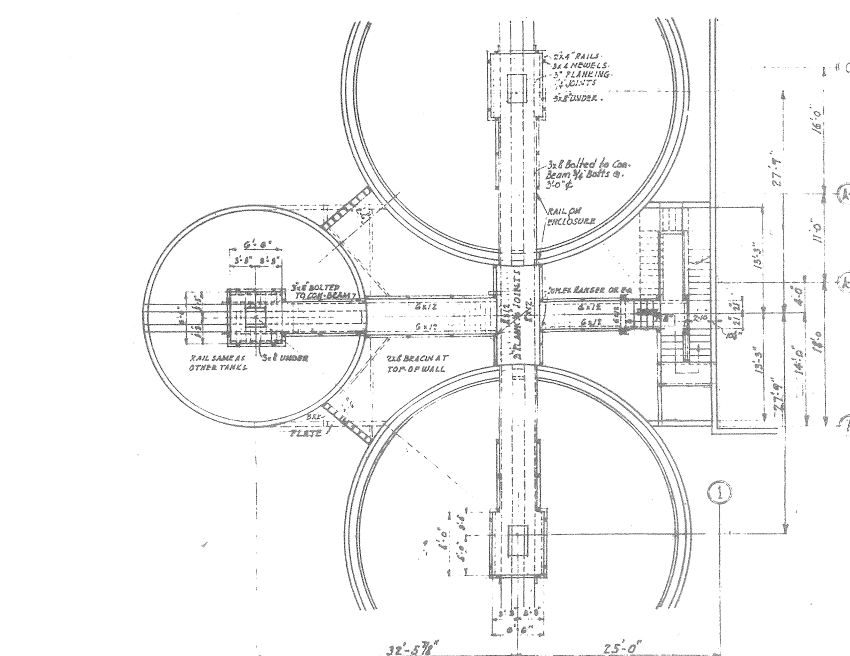
GOPHER ORDNANCE WORKS
 ROSEMOUNT, MINNESOTA
 BUILDING PLANS
 PART I SECTION 8

BLDG. NO. 401A

PREPARED IN U.S. ENGINEER OFFICE

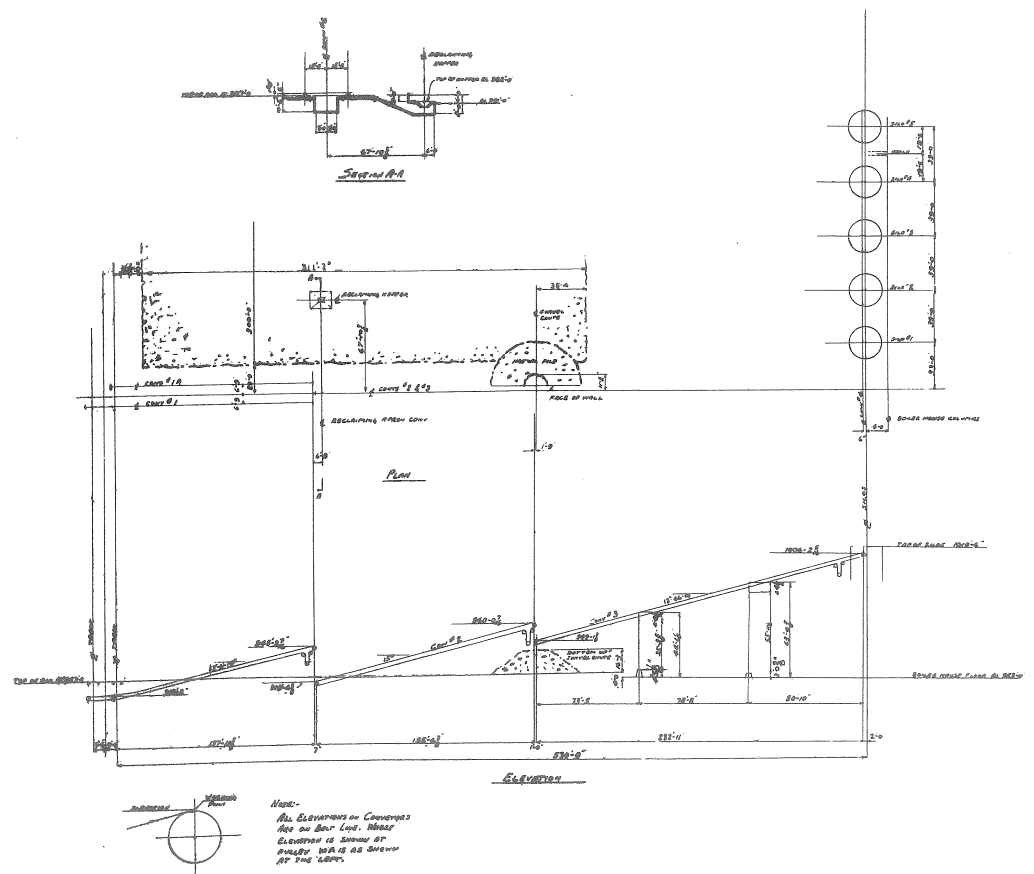
OMAHA, NEBRASKA

SEE U-61618 FOR CONTINUATION OF BUILDING --- PROJECT 8753



CONFIDENTIAL

GOPHER ORDNANCE WORKS
 ROSEMOUNT, MINNESOTA
 BUILDING PLANS
 PART I SECTION 8
 BLDG. NO. 401A
 PREPARED IN U.S. ENGINEER OFFICE OMAHA, NEBRASKA



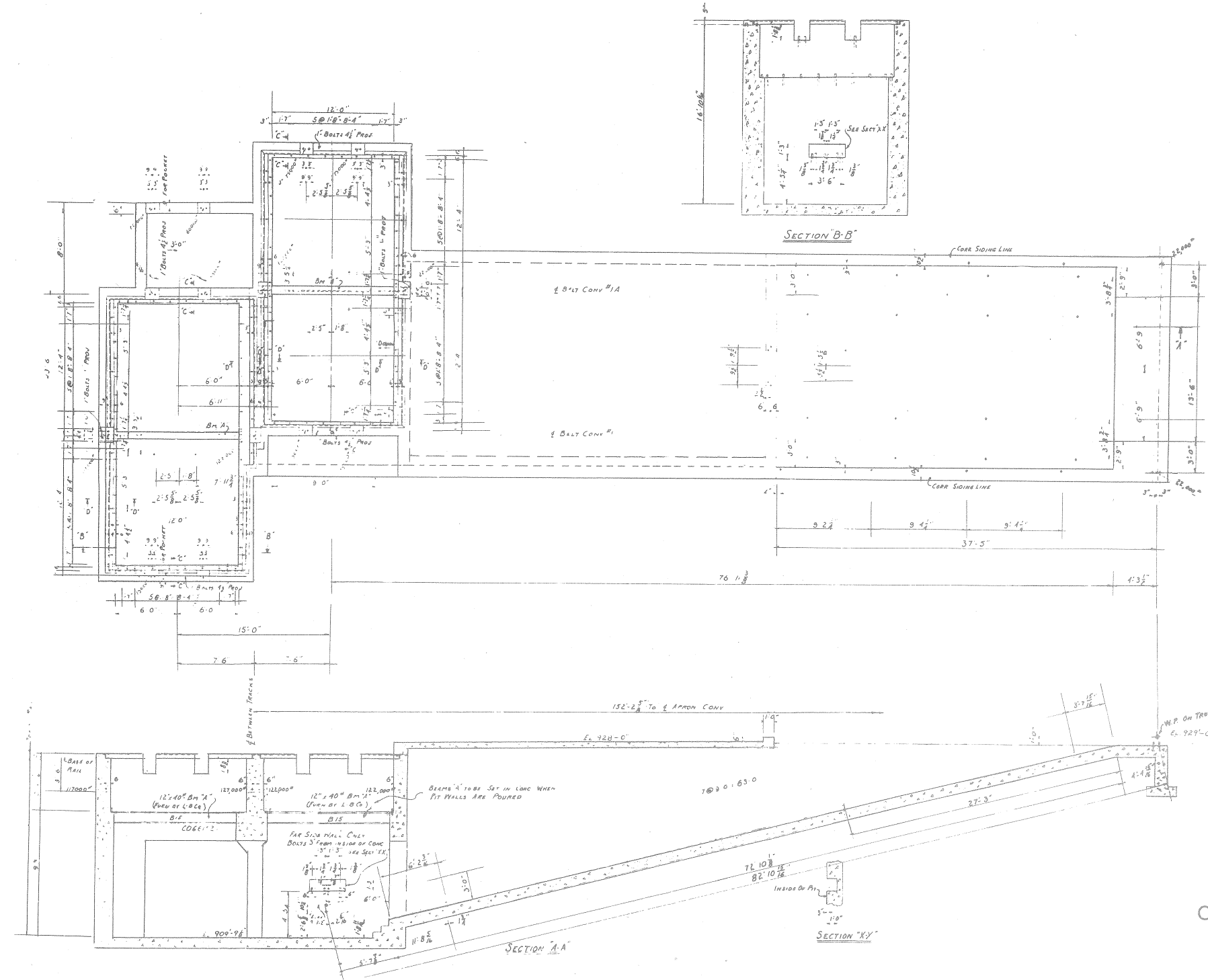
COAL CONVEYOR PLOT PLAN

CONFIDENTIAL

GOPHER ORDNANCE WORKS
 ROSEMOUNT, MINNESOTA
 BUILDING PLANS
 PART I SECTION 8
 BLDG. NO. 401A

PREPARED IN U.S. ENGINEER OFFICE OMAHA, NEBRASKA

332

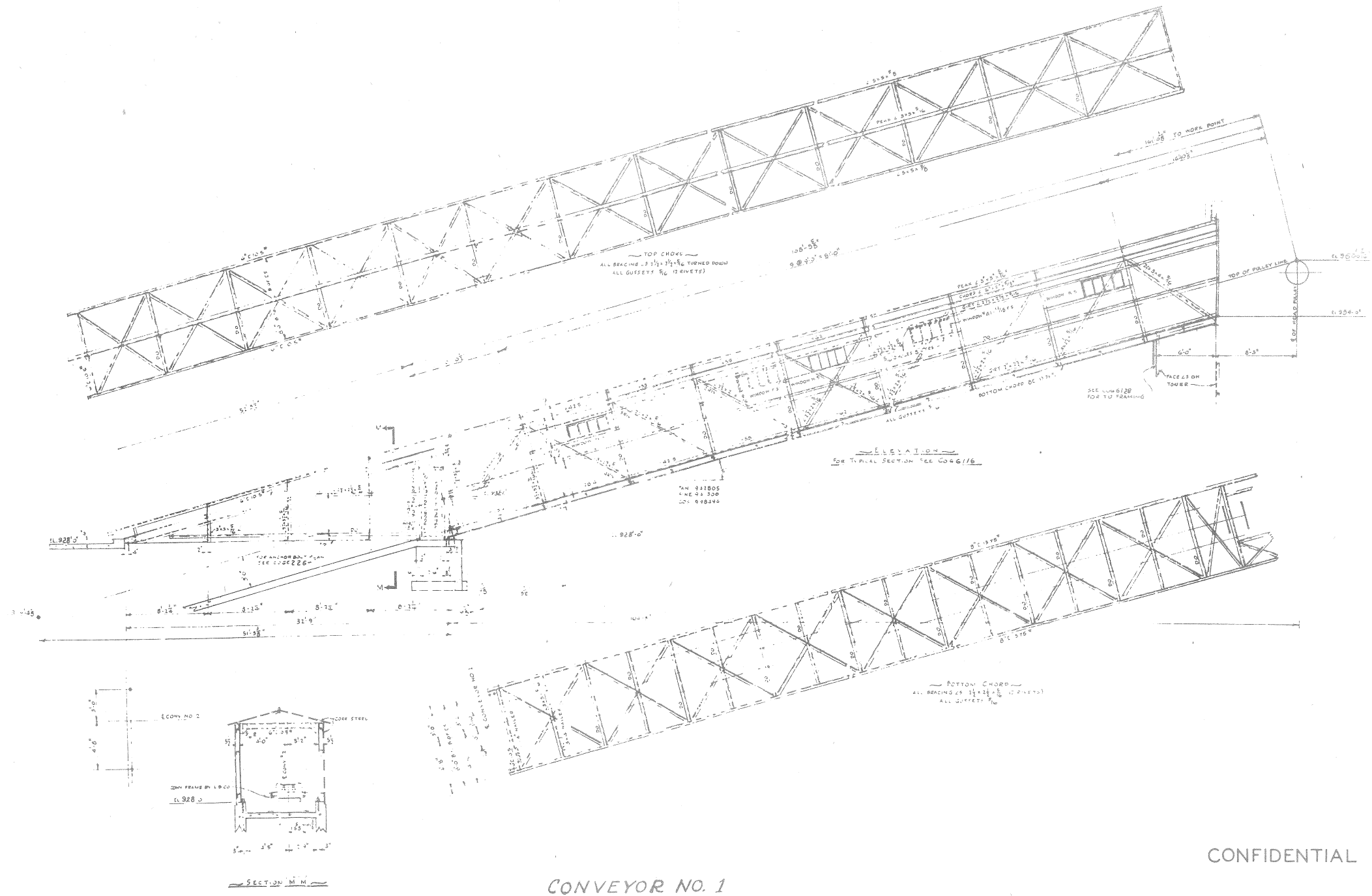


CONFIDENTIAL

GOPHER ORDNANCE WORKS
 ROSEMOUNT, MINNESOTA
 BUILDING PLANS
 PART I SECTION 8
 BLDG. NO. 401A

CONVEYOR Pits

PREPARED IN U.S. ENGINEER OFFICE OMAHA, NEBRASKA



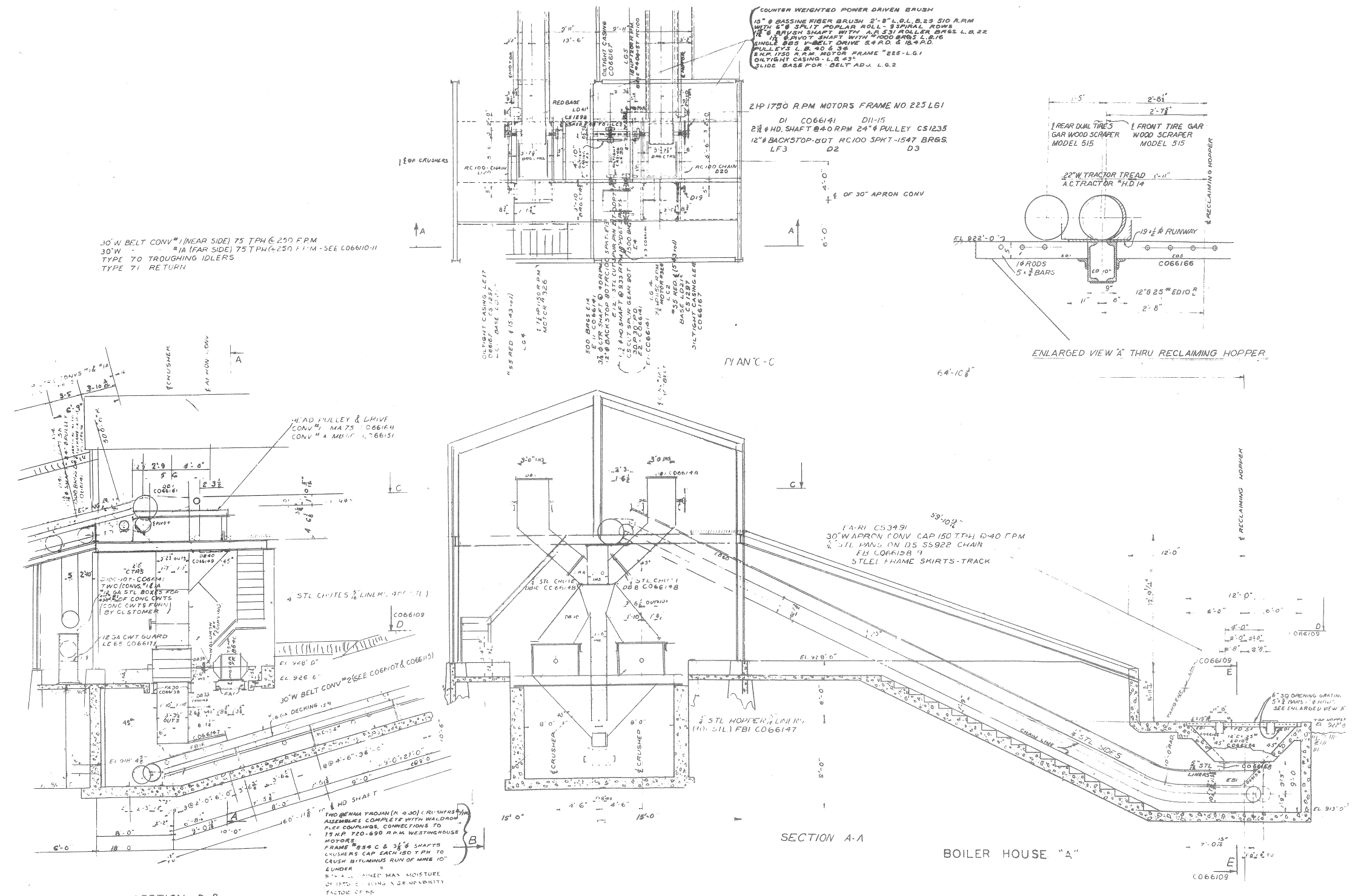
CONVEYOR NO. 1

CONFIDENTIAL

GOPHER ORDNANCE WORKS
ROSEMOUNT, MINNESOTA

BUILDING PLANS
PART I SECTION 8
BLDG. NO. 401A

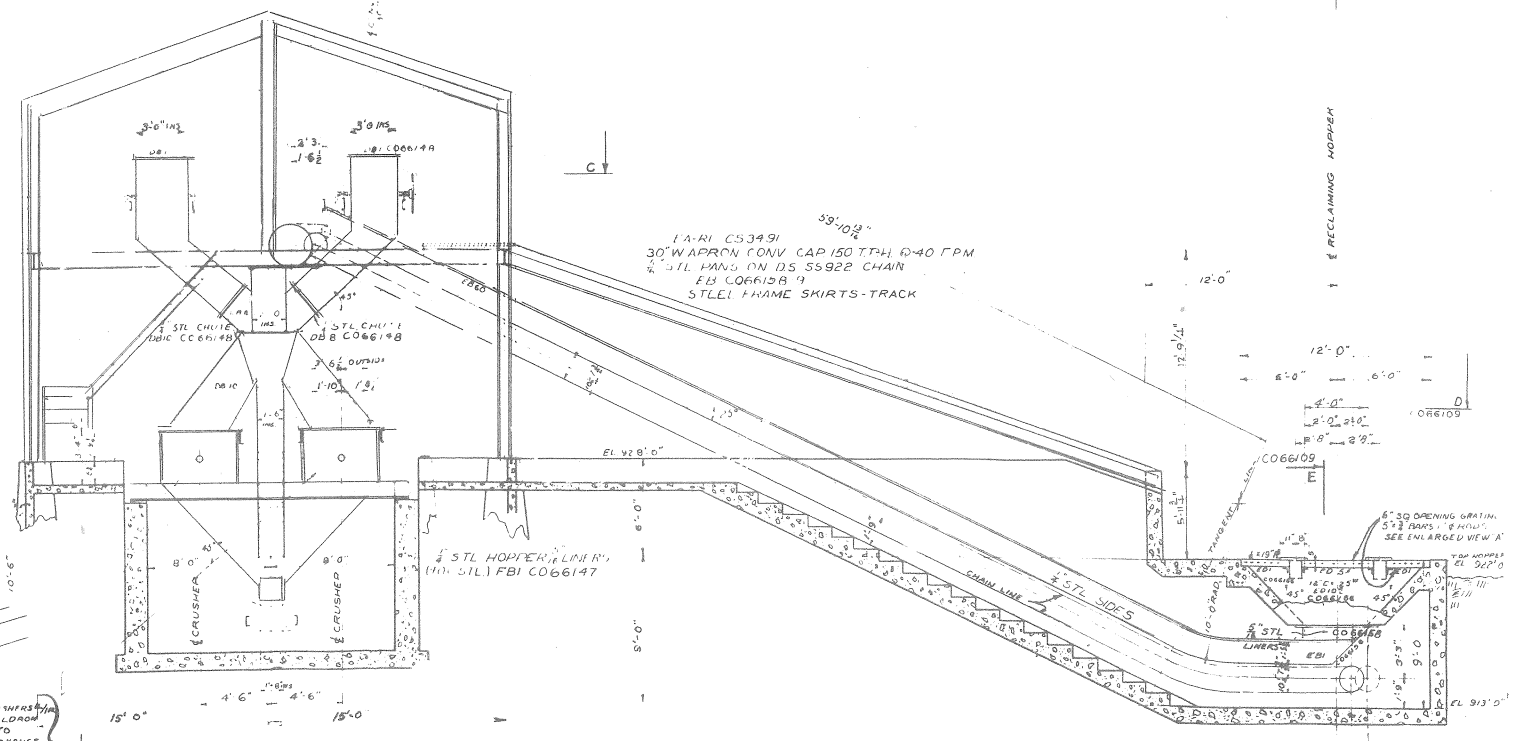
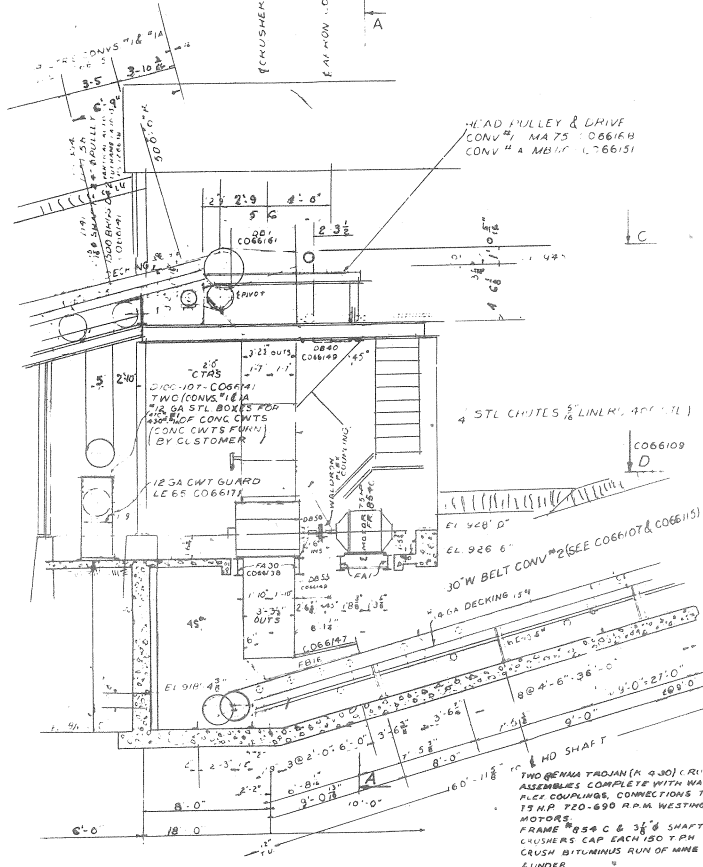
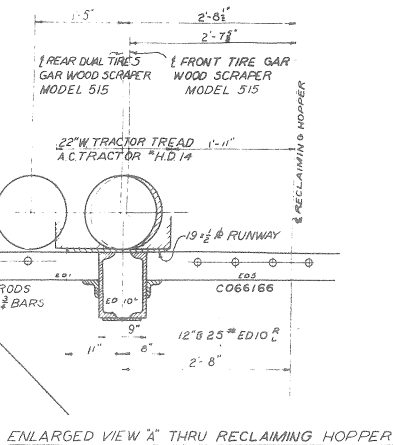
PREPARED IN U.S. ENGINEER OFFICE OMAHA, NEBRASKA



30" W BELT CONV #1 (NEAR SIDE) 75 TPH @ 250 FPM
 30" W #1A (FAR SIDE) 75 TPH @ 250 FPM - SEE C06610-11
 TYPE 70 TROUGHING IDLERS
 TYPE 71 RETURN

COUNTER WEIGHTED POWER DRIVEN BRUSH
 12" S BASSINE FIBER BRUSH 2'-8" L.O.L. B.E.S 510 R.P.M
 WITH 5/8" SPLIT PULLEY ROLL - SPIRAL FORM
 12" S BRUSH SHAFT WITH A.R. 531 ROLLER BRGS L.B. 22
 12" S BRUSH SHAFT WITH 1000 BRGS L.B. 16
 SINGLE 825 K-BELT DRIVE 5.4 A.D. @ 18" P.D.
 PULLEYS L.B. 40 S. 36
 12" S 1750 R.P.M. MOTOR FRAME "225-L.G.1
 OUTLIGHT CASING - L.B. 23
 SLIDE BASE FOR BELT ADJ. L.G. 2

2HP 1750 R.P.M MOTORS FRAME NO 225 LG1
 D1 C066141 D11-15
 2 1/2" HD. SHAFT @ 4-0 RPM 24" PULLEY CS1235
 12" BACKSTOP-ROT RC100 SPKT-1547 BRGS.
 LF3 D2 D3



SECTION B-B

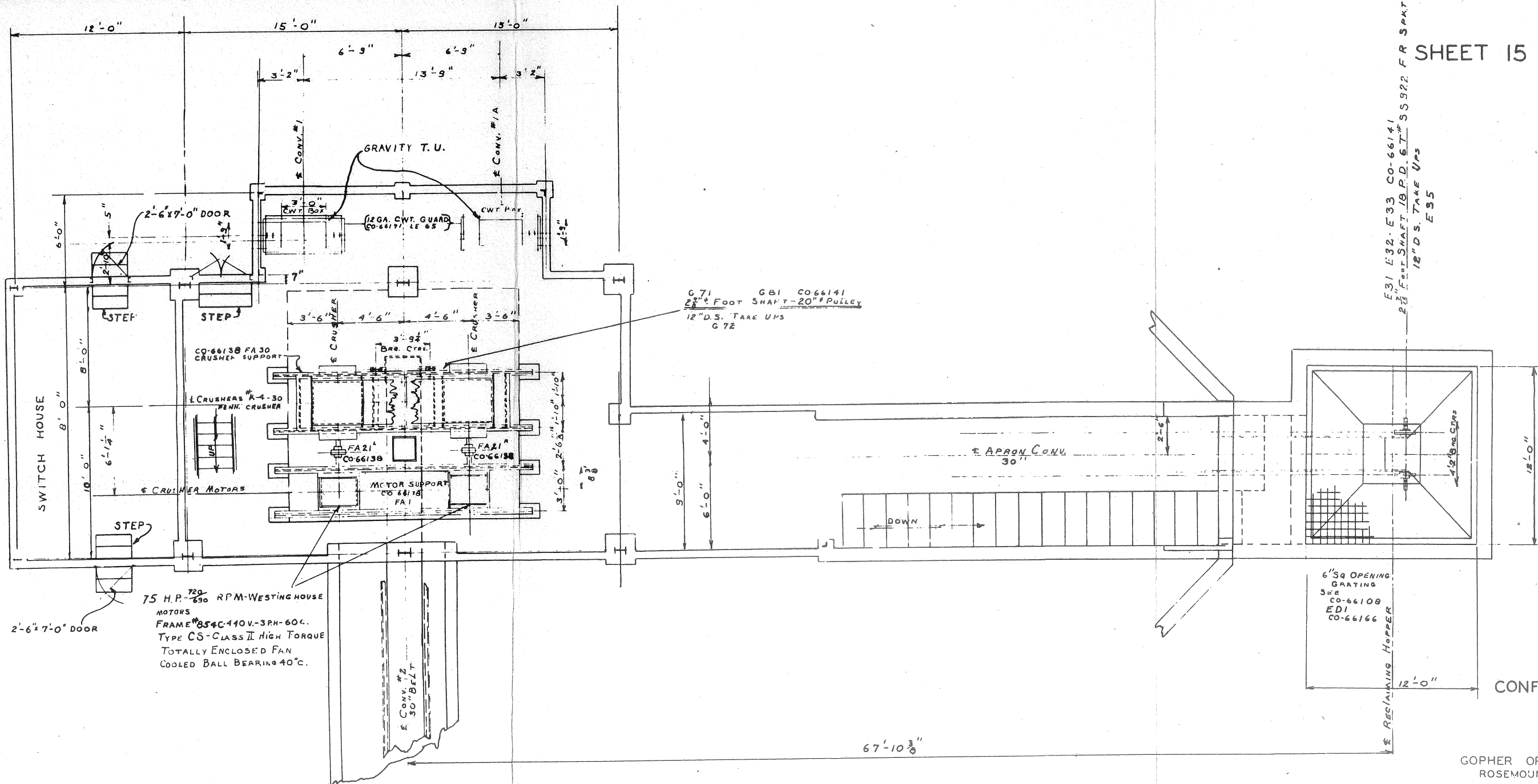
SECTION A-A

BOILER HOUSE "A"

CONFIDENTIAL

CRUSHER HOUSE

GOPHER ORDNANCE WORKS
 ROSEMOUNT, MINNESOTA
 BUILDING PLANS
 PART I SECTION 8
 BLDG. NO. 401A
 PREPARED IN U.S. ENGINEER OFFICE OMAHA, NEBRASKA



E31 E32-E33 CO-66141
 2 1/2" FOOT SHAFT-20" PULLEY
 12" D.S. TAKE UPS
 E35

G.71 G81 CO66141
 2 1/2" FOOT SHAFT-20" PULLEY
 12" D.S. TAKE UPS
 G72

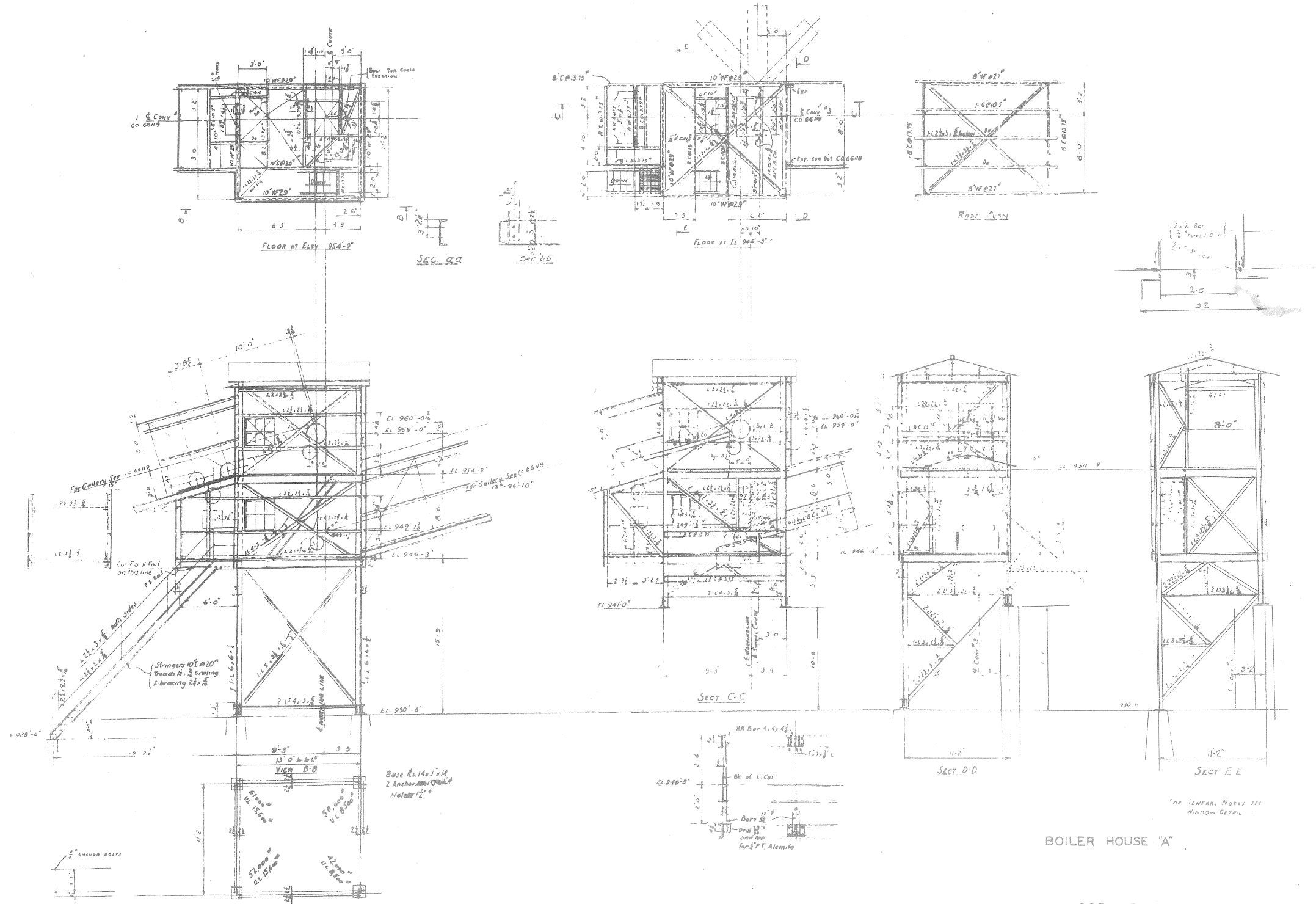
6" SQ OPENING
 GRATING
 SEE
 CO-66108
 ED1
 CO-66166

CONFIDENTIAL

GOPHER ORDNANCE WORKS
 ROSEMOUNT, MINNESOTA
 BUILDING PLANS
 PART I SECTION 8
 BLDG.NO401A

PREPARED IN U.S. ENGINEER OFFICE OMAHA, NEBRASKA

CRUSHER HOUSE



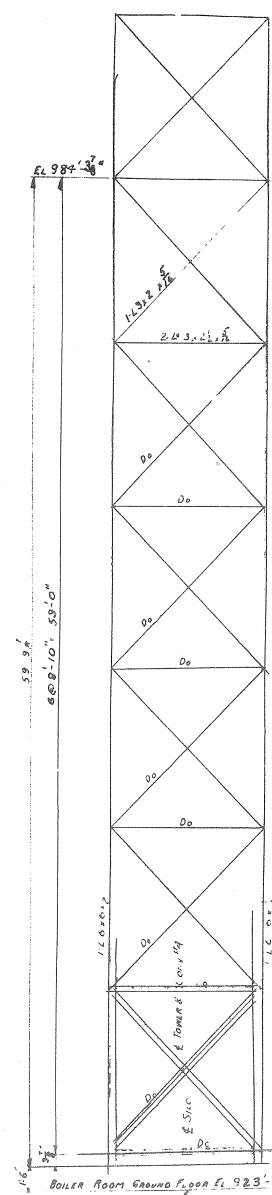
BOILER HOUSE "A"

GOPHER ORDNANCE WORKS
 ROSEMOUNT, MINNESOTA
 BUILDING PLANS
 PART I SECTION 8
 BLDG. NO. 401A

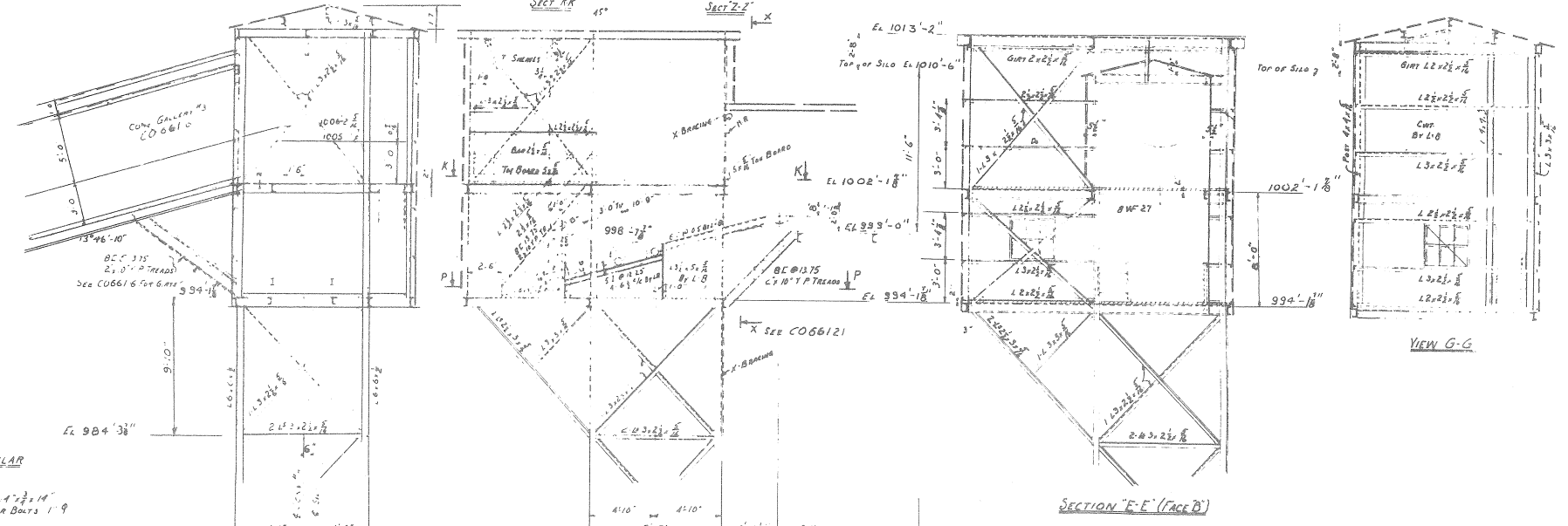
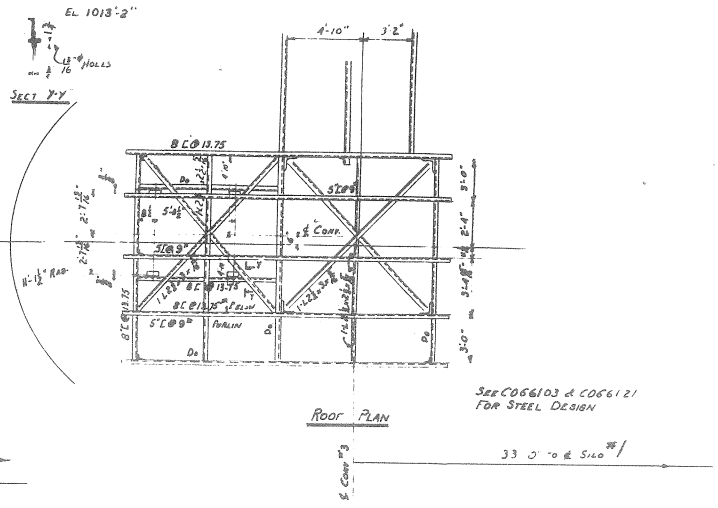
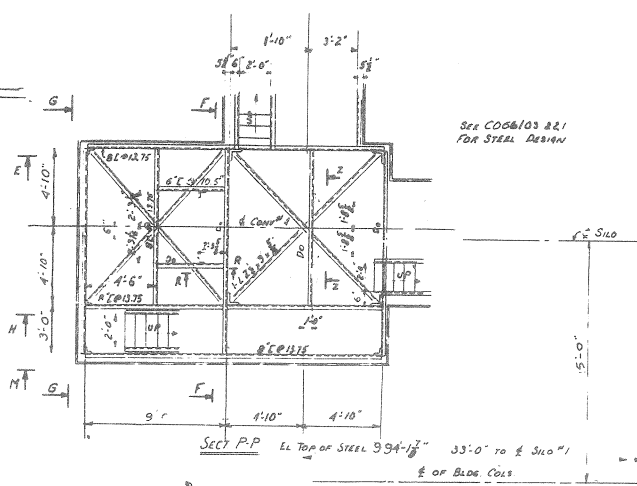
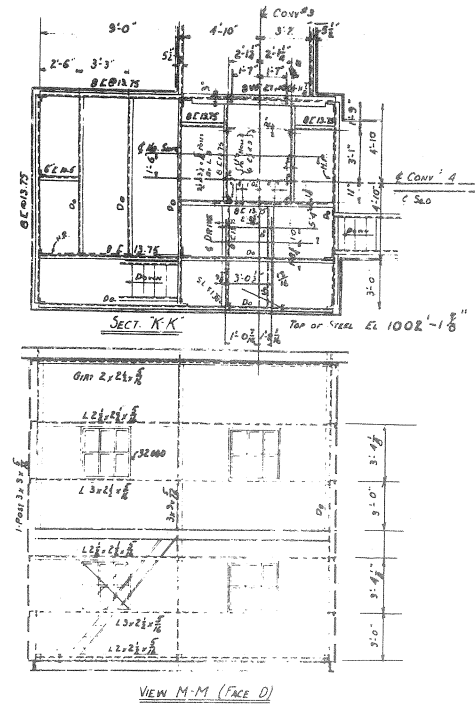
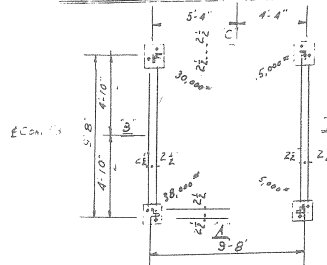
CONFIDENTIAL

CONVEYOR #15

PREPARED IN U.S. ENGINEER OFFICE OMAHA, NEBRASKA



ELLY LOWER PORTION LIKE A OTHER FACES SIMILAR



ELEV. FACE A SECTION F-F

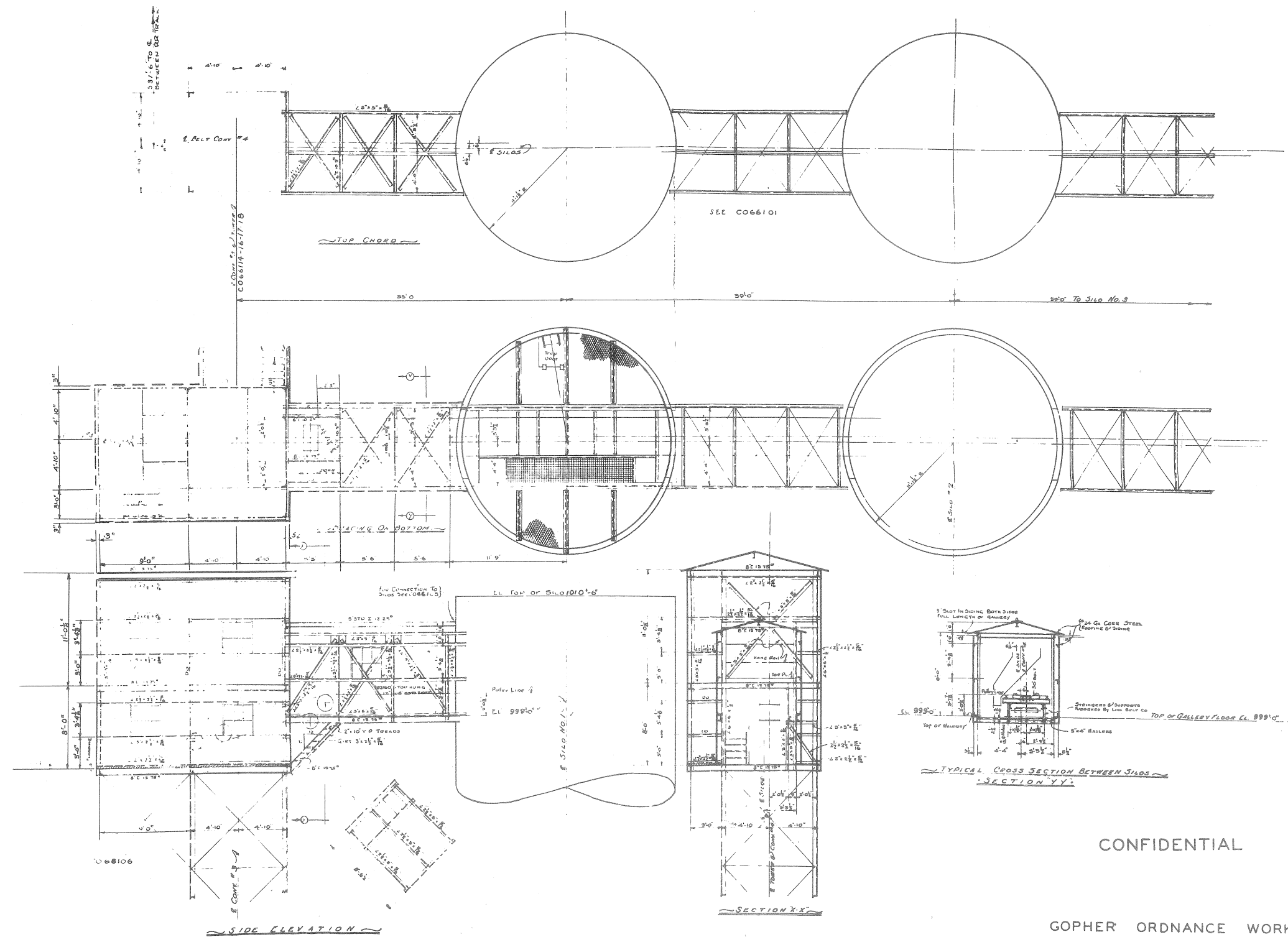
ELEV. FACE D SECTION H-H

CONFIDENTIAL

GOPHER ORDNANCE WORKS
 ROSEMOUNT, MINNESOTA
 BUILDING PLANS
 PART I SECTION 8
 BLDG. NO. 401A

PREPARED IN U.S. ENGINEER OFFICE OMAHA, NEBRASKA

SILo CONVEYOR HOUSE



SILO CONVEYOR HOUSE

CONFIDENTIAL

GOPHER ORDNANCE WORKS
 ROSEMOUNT, MINNESOTA
 BUILDING PLANS
 PART I SECTION 8
 BLDG. NO. 401A

PREPARED IN U.S. ENGINEER OFFICE OMAHA, NEBRASKA