

December 8, 2022

VIA EMAIL

Linnea Weum
University of Minnesota
Department of Environmental Health and Safety
501 23rd Ave SE
Minneapolis, MN 55455-0447

RE: Baseline Human Health Risk Assessment and Focused Feasibility Study Work Plan Approval
UMore Park, Former Gopher Ordnance Works - Portion of UMore Park, Rosemount
MPCA Site ID: SR0001605
MPCA Billing ID: 196875

Dear Linnea Weum:

The Minnesota Pollution Control Agency (MPCA) staff in the Superfund Program has reviewed the Baseline Human Health Risk Assessment (BHHRA) and Focused Feasibility Study (FFS) Work Plan (Work Plan) completed for a portion of the larger UMore Park/Former Gopher Ordnance Works Superfund site (the Site). This Work Plan addresses the North Central Study Area (NCSA), which is in the north-central portion of the Site and consists of two areas (a western area and an eastern area) that border future redevelopment areas (Attachment B). The Work Plan, dated November 2022, was prepared, and submitted on your behalf by Barr Engineering Company (Barr). Other portions of the larger UMore Park Site will be addressed during subsequent risk assessment and feasibility study activities.

The University of Minnesota (University) completed a Remedial Investigation at the Site in 2016 and 2017, and the MPCA approved the final 2017 Remediation Investigation in a letter dated October 31, 2017. The MPCA requested that the University and United States Army Corps of Engineers (USACE) complete risk assessment evaluations and feasibility studies to determine appropriate remedial alternatives to address the identified releases of hazardous substances at the Site in a letter dated November 30, 2018.

The University submitted a draft Work Plan in July 2022 for which MPCA Superfund staff provided preliminary comments on October 12, 2022. The University revised the draft Work Plan based on the MPCA's comments. The primary objective of the BHHRA is to characterize the potential threats to human health and the environment relative to future residential/recreational land use that may be posed by the constituents of potential concern (COPC) in the NCSA. Based on data collected to date, the COPCs on this portion of Site are primarily metals and polynuclear aromatic hydrocarbons (PAHs); therefore, the BHHRA focuses on potential exposure to COPCs through human contact with soil. Based on the results of the BHHRA, the FFS will evaluate response action alternatives and recommend response actions for the identified COPC releases. A treatability study will also be completed at the 154th Street Disturbed Area in support of the FFS. This treatability study will be used to evaluate whether the engineered cover/capping remedies may require additional design components in the

future. The MPCA notes that additional soil vapor sampling may be necessary in the future to investigate the vapor intrusion pathway based on potential redevelopment plans.

The Work Plan is hereby approved with the additional requirement that any plan modifications or schedule changes be promptly communicated with the MPCA. After completion of the draft BHHRA and FFS report, a public meeting will be held to solicit public comments to the findings and recommendations in the draft report.

If you have any questions regarding this letter, please contact Brigitte Hay, Project Manager, at 651-757-2497 or by email at brigitte.hay@state.mn.us, or Rebecca Ryser, Hydrologist, at 651-757-2015 or by email at rebecca.ryser@state.mn.us.

Sincerely,



This document has been electronically signed.

Brigitte Hay
Project Manager
Remediation Division



This document has been electronically signed.

Rebecca Ryser
Hydrologist
Remediation Division

BH/RR:df

Attachment

cc: Ann Wright, U.S. Army Corps of Engineers (w/attachment) (electronic)
Jim Eidem, Barr (w/attachment) (electronic)
Kristen Schimpke, Barr (w/attachment) (electronic)
Rick Kubler, Lathrop, GPM (w/attachment) (electronic)
Erin Fasbender, City of Rosemount (w/attachment) (electronic)
Cathy Udem, Dakota County Environmental Services (w/attachment) (electronic)

**Disclaimers
UMORE PARK
MPCA SITE ID: SR0001605**

1. Reservation of authorities

The MPCA Commissioner reserves the authority to take any appropriate actions with respect to any release, threatened release, or other conditions at the Site. The MPCA Commissioner also reserves the authority to take such actions if the voluntary party does not proceed in the manner described in this letter or if actions taken or omitted by the voluntary party with respect to the Site contribute to any release or threatened release or create an imminent and substantial danger to public health and welfare.

2. No MPCA assumption of liability

The MPCA, its Commissioner, and staff do not assume any liability for any release, threatened release, or other conditions at the Site or for any actions taken or omitted by the voluntary party with regard to the release, threatened release, or other conditions at the Site, whether the actions taken or omitted are in accordance with this letter or otherwise.

3. Letter based on current information

All statements, conclusions and representations in this letter are based on information known to the MPCA Commissioner and staff at the time this letter was issued. The MPCA Commissioner and staff reserve the authority to modify or rescind any such statement, conclusion, or representation and to take any appropriate action under their authority if the MPCA Commissioner or staff acquires information after issuance of this letter that provides a basis for such modification or action.

4. Disclaimer regarding use or development of the property

The MPCA, its Commissioner and staff do not warrant that the Site is suitable or appropriate for any particular use.

5. Disclaimer regarding investigative or response action at the property

Nothing in this letter is intended to authorize any response action under Minn. Stat. § 115B.17, subd. 12.

Site Location Map
UMore Park-North Central Study Area
MPCA Site ID: SR0001605

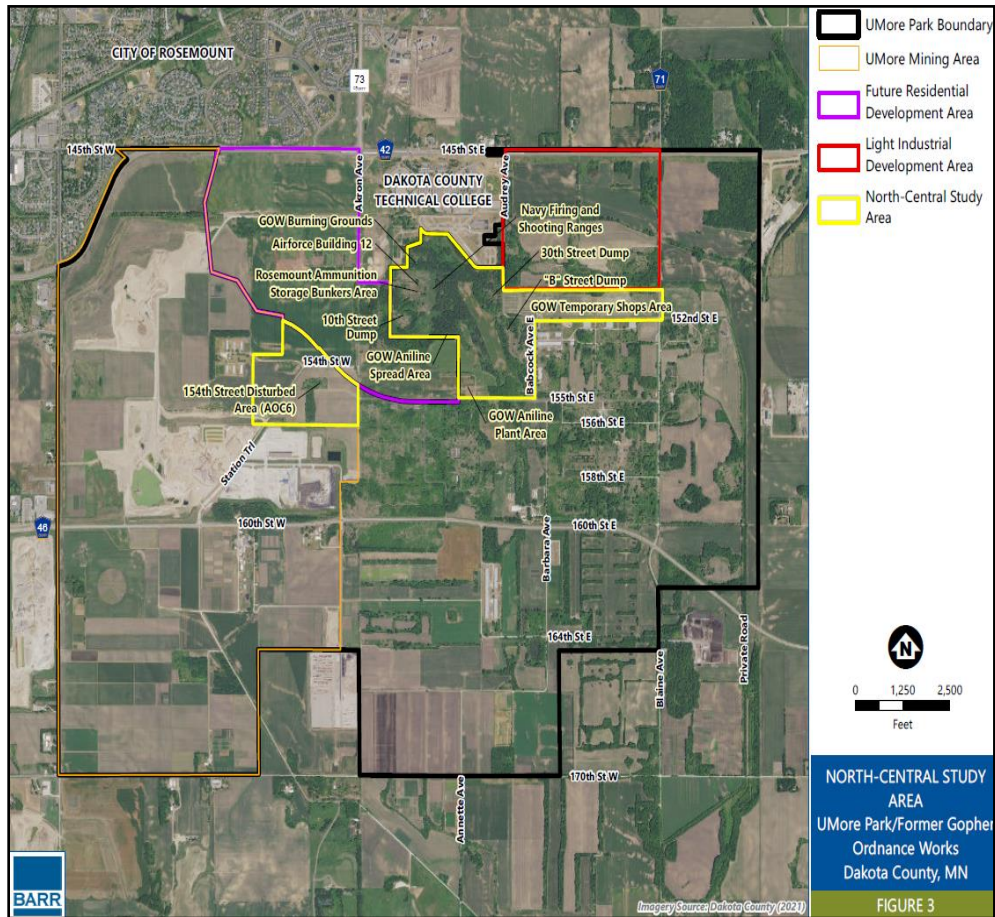


Figure adapted from Barr Engineering Co.